

Tutors

continued from page 1

intern for Birth to Three or the Family Literacy Program.

"Students will be able to practice their language skills and learn more about the cultural issues related to the Hispanic culture," Baker said. For students considering education as a career, the internship "helps you understand what it means to be a teacher," she said.

Students seeking extra speaking practice can find an ESL partner from Lane Community College. Academic advisor for the LCC downtown branch Paulina Mross said that many Hispanic students — primarily from Mexico, Columbia and Peru — live with Spanish-speaking families or friends and don't have many opportunities to speak English. The exchange program allows American and Hispanic students to learn from each other, she said. Partners can meet at their own convenience and rotate speaking in Spanish and English, so that each person gains the language skills and cultural exposure from the other native speaker, she said.

The High School Equivalency Program — a federally funded project to help migrant, seasonal work-

ers and their families receive their General Educational Development Diploma and move on to higher education — always looks for volunteers from the University and LCC to tutor the students in grammar, literature, math, science and social studies, HEP director Emilio Hernandez said.

Contact Paulina Mross
at 463-5940 about the LCC language exchange program

Contact Emilio Hernandez
at 346-0882 to volunteer for the High School Equivalency Program

ers and their families receive their General Educational Development Diploma and move on to higher education — always looks for volunteers from the University and LCC to tutor the students in grammar, literature, math, science and social studies, HEP director Emilio Hernandez said.

"Students will be able to practice their language skills and learn more about the cultural issues related to the Hispanic culture."

Doris Baker
Participatory Learning
Experience Coordinator

Eighty percent of HEP students are Hispanic, Hernandez said, and most students are between the ages

of 19 and 22, though some are in their 30s and 40s. Some have just moved to the United States; others have been involved in agricultural work in Oregon and Idaho for some time "and see themselves in a dead-end place," he said.

HEP students will begin arriving for the 10-week term April 9, and Hernandez needs volunteers who can dedicate 8 to 12 hours a week, he said.

Slade plans to intern with Kelly Middle School again this term, he said. During the past two terms, he's formed a relationship with his students, he said. Some invite him over for dinner with their parents, and they've all come to depend on Slade to understand the material.

"I feel like I'm making a difference," he said. "When I'm not there, (the students) really don't learn anything."

E-mail reporter Diane Huber
at dianehuber@dailyemerald.com.

ASUO

continued from page 1

get information out to students about conserving energy on campus, and we appreciate that," Moseley said.

In another campaign endeavor, the ASUO is beginning talks with LTD to develop the best possible bus routes for students. LTD has decided to cut some bus routes to the University next year, and Nair said the ASUO has plans to start negotiations in two weeks, after the Oregon University System approves the University's student incidental fee budget.

The ASUO hopes to persuade LTD to establish a mandatory institutional survey to allow students to voice their opinion about the bus routes they use most.

"We are one of their biggest clients, and we would like to make sure our students can get the best use of this service," Nair said.

The ASUO will also discuss money issues with LTD. This year, the LTD asked for an

\$80,000 increase in student fee money; a significantly higher request than in past years. Although the University could not afford to give LTD an increase of that size, Nair said, the ASUO wants to negotiate a contract that accommodates both parties.

Currently, \$432,000 of the \$625,000 cost of running bus routes to campus is paid for with student fees.



BROOKLYN

level of pay with them so we are both satisfied." Along with the annual events, such as the spring Street Faire and the "Get out the Vote" campaign, the ASUO also has plans to hand out a renter's guide booklet to help students make educated decisions about

leasing and owner's rights.

In addition, the ASUO and the International Student Association will be working with the American Civil Liberties Union, conducting educational forums geared to international students about the United States' anti-terrorism legislation.

This spring, Brooklyn and Nair also have plans to focus on multiculturalism at the University. They will re-evaluate the six multicultural requirements students must meet to graduate from the University with a panel of representatives from the Undergraduate Council, University Senate and Faculty Advisory Council.

"The requirements are 10 years old, and we basically want to improve the criteria that the classes have to meet," Brooklyn said.

Plus, they will be holding a multicultural festival May 16 to give students the opportunity to participate in cultural performances and promote the student unions on campus.

E-mail reporter Danielle Gillespie
at daniellegillespie@dailyemerald.com.

U of O Cultural Forum Presents:

Michael Moore

Sunday, April 21st, 5:00pm
EMU BALLROOM

\$10 General Public
\$7 UO/LCC Faculty and Staff
\$4 UO/LCC Students

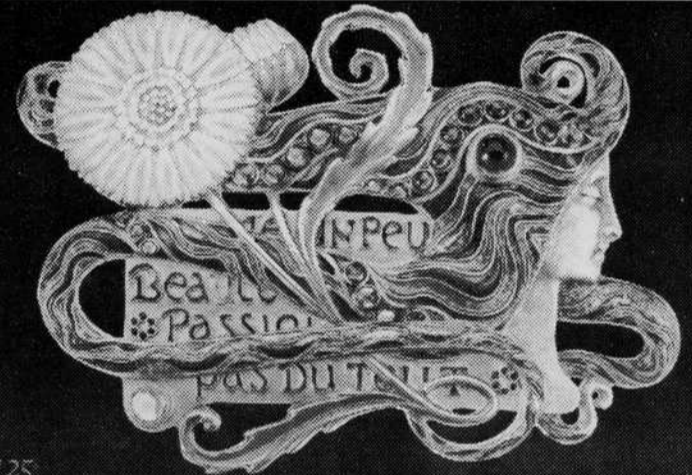
FREE live video feed
at campus locations

Tickets Available through:
Tsunami Books (541) 345-8986
UO Ticket Office (541) 346-4363

Book Signing with Michael Moore
after the event

Free showing of *Roger & Me* and
highlights from *The Big One* and
Michael Moore's new TV series "The
Awful Truth." Friday, April 19th 7:00pm.

Sponsored in part by:
ASLCC, ASUO, SEIU,
& UO Concerned Faculty.



Art Nouveau Dreams:

Turn-of-the-Century Masterworks

from the Musée des Art Décoratifs, Paris

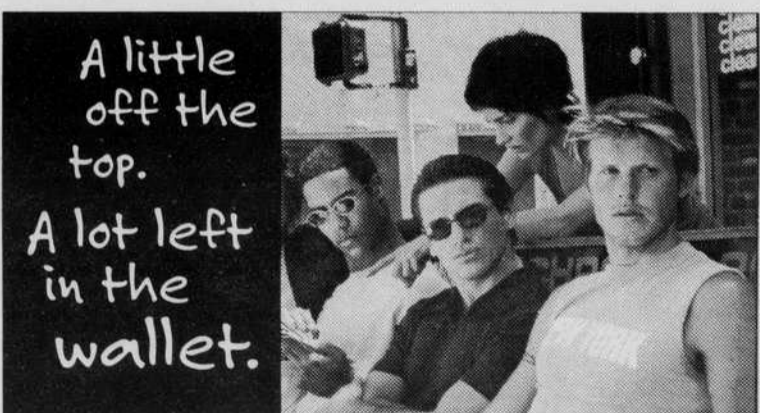
Penelope Hunter-Stiebel,

Consulting Curator of European Art, Portland Art
Museum, will be the Sally Claire Haseltine Lecturer in
the History of Design and Decorative Arts.

April 8, 7-8 p.m.

115 Lawrence Hall, University of Oregon

013726



A little
off the
top.
A lot left
in the
wallet.

Still the Best. Still just...

\$12⁰⁰

Trendy and professional
haircuts by friendly
haircare specialists.

Call Ahead Service available at

WILLAMETTE SQUARE

2526 Willamette Ave.

683-1405

Open 7 days a week; Mon-Sat 9am - 7pm • Sun 11am - 4pm

SUPERCUTS

As hip as you want to be.

EMERALD CITY COMICS

Your campus connection for...
COMICS & GAMES

New Releases • MAGIC • Back Issues • AD & D
Subscription • Vampire • Discounts • Mage Knight

Plus we RENT/BUY/SELL Movies (VHS)

770 E. 13th • Eugene • 345-2568 • 10-6 Mon-Sun
In the Smith Family Building

001782

TM