

Haben Woldu and Oscar Arana

Hello, it's Haben and Oscar running for ASUO executive office. We're running because we want to give back to the campus that has provided so much for us and the student body who inspires and supports us.

We strive to promote student involvement in the issues that affect all of us. We will protect students' money by making sure administration uses it where it is needed the most. We believe in creating a safe campus environment for everyone and improving housing conditions for all students. We will also improve parking conditions by working on short and long term plans of action.

Since our first year, we have worked hard and led various organizations, student unions and been involved on various boards.

We will accomplish our goals and remain true to our principles and values. We will work hard to create change.

Vote for Haben and Oscar, the candidates that are about 'keepin' it real.'



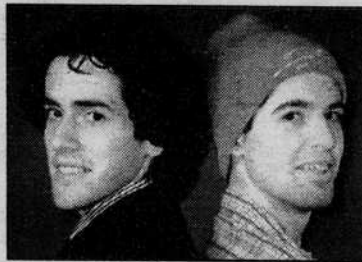
Sean Powell and Tyler Lofquist

Pools of apathy have flooded our student body. Our executive office is out of touch with the student body and rarely has a clear perception of the students wants and needs. As true representatives of the student body we intend to dissolve the elitist tendencies of the ASUO and turn the stagnant pool of apathy into a current of participation and knowledge, so that the ASUO is truly the Associated Students of the University of Oregon. It is our contention that we will be able to do this because we are a part of and in touch with the true general will of the student body. Secondly we feel that the issues we have chosen to address are fundamental to building this new and essential, direct participatory Associated Students of the University of Oregon.

It is because of these ideals that we have chosen the specific issues of our candidacy. Our first goal, as ASUO executives, is counter-acting Governmental budget cuts of higher education, as well as correctly allocat-

ing incidental fees and appropriating these fees to the desires of the Student body. We also will address on and off-campus student housing rules. Also with the rumors of the reinstatement of the Party Patrol, another policy we are committed to is the legal rights of students. And lastly is the ever-growing problem of under budgeted programs for peer advising and tutoring.

We have picked these issues because they affect not only ourselves as students, but also the entire student body. While these are the issues we feel affect us students, we are always here to listen to concerns and questions that students have for and about their student government. As ASUO executives we will install the necessary means for you, the student body, to represent yourselves. This, and only this, is how a student government should be run, associated and united.



Lucas Willett and Ezra Mannix

"Luke and Ezra are such nice boys - if you love me, you'll vote for them!"

-Your Mother

OUR PLATFORMS:

- replace desks and chairs in classrooms, especially in Gilbert, Pacific and Klamath halls
- establish an on-campus 24 hour computer and coffee lab with at least 25 public computers
- free airport shuttles from campus during finals week
- dorm meal card accepted by EMU food vendors
- new covered bike racks in strategic locations
- lower campus kilowatt usage 15% by June 1, 2003
- address the issue of faculty pay
- salaries for professors and GTFs should attract and retain high-value instructors
- change leasing options for U of O housing
- get the varsity baseball team back!
- make creative writing an eligible major
- put clocks on the west and north faces of the EMU by the Fishbowl
- establish full-tenured professorship for long-standing "visiting" professors Hunt, Wixman and Weinhold
- assess plans to make athletics fully self sufficient
- invite the Blazers to play an exhibition game at Mac Court

"Bureaucracy, safely repeating today what it did yesterday, rolls on as ineluctably as some vast computer, which, once penetrated by error, duplicates it forever"

-Barbara Tuchman, The March of Folly

"What does ineluctably mean anyway?"

-Your Mother

Timothy "Judas" Dreier

A vote for Timothy Dreier is a vote for America and the American way of life. I will, as ASUO President, establish means by which we can eliminate all un-American activities in the ASUO and around campus. By bringing back the McCarthy tradition of strong anti-Communist action, the American way of life can be protected on campus. We must eliminate this "Red Threat" to our country and the only way the student body can do its small part is by electing me, Timothy Dreier, ASUO President. I promise, if elected, to find all Communists in the ASUO and have them summarily removed from their posts. In addition to eliminating subversives in the ASUO, I will devote our resources to fighting Communism on a national level to the extent that it is possible to do so. This will involve establishing an ASUO program to research, nationwide, subversives in student governments. Additionally, I will devote part of the ASUO budget to building a monument to Joe McCarthy in place of the Pioneer Mother statue on 13th. This monument will be a reminder of the evils of Communism to all who pass by its feet. Building a monument to McCarthy will also remind all subversives of America's power to eliminate their turncoat opinions from our great nation. As ASUO President I will use whatever resources are available to get the University involved in the sanctioning of Cuba. Elect me, Timothy Dreier, ASUO President if you value the American way of life.

ASPAC

ASSOCIATED STUDENTS PRESIDENTIAL ADVISORY COUNCIL

The Associated Students Presidential Advisory Council (ASPAC) is an 11-member committee that meets at least twice each term with the University President. The objective of this board is to advise the University President on matters affecting the student population. Additionally, ASPAC improves student/administration relations and communications between students, student boards and programs. This board is concerned with providing the University President with a sense of the diverse student population and the full spectrum of student opinion. The board meets at least twice each term and currently has no stipend. Two members are elected at-large for two-year terms in alternating years. Other members include: ASUO President, Vice President, University Affairs Coordinator and representatives from campus media, EMU Board, Student Senate, Interfraternity Council, Panhellenic Council, Residence Hall Governing Council, and ASUO Programs. Other members represent international students, law/graduate students, Lesbian/Gay/Bisexual/Transgender students and non-traditional students.

Steve Gold

no statement

Athletic Dept. Finance Committee

ATHLETIC DEPARTMENT FINANCE COMMITTEE

The ASUO Athletic Department (AD) Finance Committee is composed of five members including two Finance Senators serving for two years, one Finance Senator serving for one year, one member appointed by the ASUO President for a one year term, and one member appointed by the Athletic

Department Team Council for a one year term. The ASUO Finance Coordinator serves as a nonvoting member. The chair of the AD Finance Committee is picked from the elected members. Members of this committee work 8-10 hours per week. Senate members of this committee receive a stipend of \$75/month for four months.

The AD Finance Committee is responsible for working with the Athletic Department to develop a recommendation for the incidental fee allocation for the Athletic Department. This recommendation is forwarded to the Student Senate for final approval.

No At-Large Candidates

PFC at-large (2-yr term)

ASUO PROGRAMS FINANCE COMMITTEE

The ASUO Programs Finance Committee is composed of seven members including two Finance Senators serving two year terms, two members elected at-large for two year terms, one Finance Senator serving a one year term, one member appointed by the ASUO President for a one year term, and one appointed by the ASUO Programs Council for a one year term. The chair of the ASUO Programs Finance Committee is chosen from its elected members. From about January through March, this committee meets 2-3 times per week. Members work 15-20 hours per week during this time and at least 10 hours per week the remainder of the school year. Senate members of this committee receive a stipend of \$150/month for five months in addition to their senate stipend. The stipend for the at-large positions is also \$150/month. The ASUO Programs Finance Committee hears line item budgets from over 119 ASUO programs (e.g. MECHA, Legal Services, etc) and recommends a lump sum budget to the Student Senate for their approval.



James Tilford

As a student, it is important to me to ensure that Student Government facilitates adequate levels of funding for student groups and organizations that provide quality program content for all students at the University.

It is my intention to provide an open channel of communication between any student with a question or concern and the Student Senate by publishing personal contact information and maintaining regular office hours.

I have 8+ years of experience in management and finance and have previous Student Government finance experience. I am announcing my candidacy because I am sure that my experience will contribute to the duties of the finance organization.

I pay incidental fees too, a vote for me is one less worry for you!



Russ Tkebuchava

After serving a year on the PFC, I fully realized the importance of this position within the

ASUO. I also realized the need for continuance. Our duties would have been impossible to fulfill without the guidance of our chair. We often relied on her previous experience with the budget process for critical insight. Unfortunately, no PFC member, with the exception of myself, will be able to serve on the committee next year. I need your support to ensure that next year's PFC has enough experience to allocate more than \$4 million in student fees. I stand unaligned with any student group or political cause. I can assure you that I will represent the interests of the student body as a whole and make decisions accordingly. As an accounting and economics major, I feel that I have the necessary background to fulfill my duties remarkably by look at each budget objectively.

PFC (1-yr term)

Kate Shull

Allocating the incidental fee to campus programs is a challenging job that will become more demanding next year with an increase in the student population and a growing interest in student programs.

Distributing funds to over 100 organizations is a task that requires knowledge, patience, and impartiality. Following guidelines set by the committee maintains a just hearing for each group presenting a budget. This year as the PFC administrative assistant, I have been able to observe the hearing process and am fully aware of the skills needed to make the budget hearing process a success.

If elected to the Programs Finance Committee, I will successfully contribute to the distribution of the incidental fee. I will be unbiased and just during the budget process and will present solutions that best serve the University of Oregon student body. Vote for Kate Shull, PFC 1-year At-Large Member.

EMU Board at-large

ERB MEMORIAL UNION BOARD

Erb Memorial Union (EMU) Board determines the policies and long range plans of the Erb Memorial Student Union. A House Committee deals with allocation of office space, EMU lobby space, and other issues associated with the building. The Budget Committee prepares the budget for the EMU and all of its programs (Cultural Forum, Child Care Center, Outdoor Program, etc) and presents it to the whole Board. Each Board member must serve on at least one committee and attend all Board meetings. The Chair of the Board and the chair of each committee keep at least 5 office hours per week.

The Board consists of 15 voting members including two Finance Senators serving two year terms, one Finance Senator serving one term and four members elected from the student body at-large for two year terms. (See list of positions available above for specific position numbers and length of term for this election.) Other members include appointed representatives of the ASUO Executive, ASUO programs, EMU programs, EMU classified staff, and faculty. The three Finance Senators all serve on the EMU Budget Committee along with three other members of the Board plus the EMU Business Manager as a