

News brief

ASUO Senate funds Night Ride

The ASUO Student Senate voted 10-6 on Wednesday night to transfer \$300 from surplus funds to Night Ride, a new University service which will offer rides to both men and women. Program director Nikki Fancher said the money would be used for outreach and program publicity costs.

Debate among senators centered not on the use of the money, but on the validity of Night Ride. The program was created in response to a federal Office of Civil Rights investigation, which found that the University service Project Saferide discriminated against men by offering rides only to women.

Sen. Andy Elliott, who voted against the motion, said he did not

support the creation of Night Ride because he believed it would be more efficient to incorporate the new program into Saferide.

Night Ride "makes absolutely no fiscal sense," Elliott said.

Senators voted unanimously to transfer \$4,000 from surplus funds to the Student Insurgent. The money will be used to pay a speaker at a conference sponsored by the group.

Senators approved a special request by Asian-Pacific American Student Union to transfer money within the group's budget. A request by the International Student Association for \$100 of surplus money for programming was also approved; another request by the ISA was tabled.

Senators also voted to table a \$500 request by the Multicultural Center for retreat expenses because a date for

the retreat had not yet been set.

Senate President Peter Watts announced the resignation of Programs Finance Committee senator Eddy Morales. Morales said in a letter he resigned because he was no longer attending the University.

Senators unanimously voted to appoint freshmen Andrea Hall and Meryl Kusyk to the ASUO Elections Board.

—Kara Cogswell

Astrology

continued from page 1A

film. After some fun suggestions from the audience, a consensus was reached that the subject matter of the movie would be the late Ken Kesey — to be played by Robert Redford.

This kind of specificity was said only in jest, as astrology is not an exact science. Mitchell said it is more like philosophy than anything else. Still, looking back on the events of Sept. 11, Mitchell expressed a certain regret about occasionally being right.

At last year's reading, Mitchell predicted trouble late in the year. Eugene resident Rosanne Raymond recalled that Mitchell had specifically mentioned the strong possibility of war for October 2001.

"I thought she had really missed the mark. The country was doing so well that war seemed a long way away," Raymond said.

Fellow astrologer Gary Rabideau, who was in attendance for "professional support," said the predictions made during astrological readings should be taken as suggestions, like a weather report.

"You can tell someone it's going to rain tomorrow, and they'll still go out in a swimsuit," he said.

Mitchell takes an active stance in the community, which is why she organizes this annual event as a fundraiser for Food for Lane County. Wednesday's reading raised \$700 for the charity.

E-mail senior Pulse reporter Mason West at masonwest@dailymerald.com.

Tobacco

continued from page 1A

sue at two meetings and tabled debate for the second time in early November.

Lombardi, who could not attend Wednesday's meeting, said he was disappointed the board put financial concerns before concerns about student health.

"I think it's a travesty (the board) voted to (continue selling tobacco)" he said. "To me, it's unbelievable that the UO would share in the profits of Philip Morris and use that to support students."

Williams said he sympathized

with the difficulty of the EMU board's situation because of the financial importance of tobacco sales to Erb Essentials. Tobacco sales' small financial impact on the bookstore made it easier for the bookstore board to focus on the moral issues involved, he said.

Few customers have complained about the new policy so far, bookstore main floor cashier supervisor Chris Boyd said.

"I've had more positive comments than negative," he said. "(People) read the memo, and go 'all right, it's about time,'" he said.

E-mail student activities editor Kara Cogswell at karacogswell@dailymerald.com.

City

continued from page 1A

Footbridge and using the same type of shuttle buses used by Lane Transit District's Breeze program.

"We've got a (transportation) problem here, and we have to start considering unique and creative solutions," Torrey said.

Councilor Betty Taylor was adamantly opposed to Torrey's plans to run vehicles down the footpath.

"I think it's an unacceptable idea," she said. "It would do a lot of damage to the wetland area down there."

The mayor also expressed concern about the tax base lost with companies such as Symantec and PeaceHealth moving to Springfield, but he said their decision to remain close to their old homes saved jobs.

Torrey said he will gather all Lane County elected officials soon and attempt to combine services and streamline budgets, in hopes

that any money saved will mean lesser cuts to schools.

Although Kelly and Taylor said Torrey's attempt is a good idea, neither thought much would come from it. Taylor said a better idea would be to combine the 4J and Bethel school districts and save money by streamlining that administration.

E-mail community reporter Marty Toohey at martytoohey@dailymerald.com.

60% OFF Daily Cover Price

Get it?



Home Delivery Available for Off-Campus

Students & Faculty

On-Campus, pick up at Bookstore

Professors and students can take advantage of the specially reduced college rate and save 60% off the cover price. That's only 40 cents a day — Monday through Saturday & \$2.50 on Sunday for delivery of the nation's most honored newspaper.

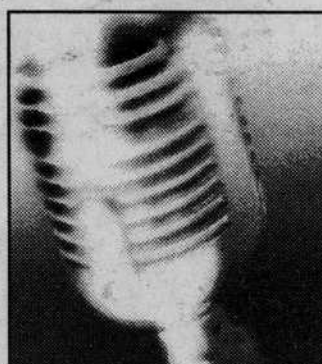
To start your subscription or for more information

CALL 888-NYT-COLL
EMAIL college@nytimes.com

Refer to Special College Media Code **S81CC1**

Expect the World® | www.nytimes.com

The New York Times



open poetry mic | mondays | 9pm-11:30pm

For those who love the power of words the Monday night poetry open mic is a real treat. This event has a dedicated following of folks who show up to both read and listen.

eclectic open mic | fridays | 9pm-midnight

From the lone singer with a guitar, to the full-throttle band. From performance artists to theater students performing self-scripted one act plays. Every Friday night a diverse group of entertainers gather to strut their stuff.

buzz entertainment

weekly evening entertainment

Throughout the week, a variety of student and local entertainers fill The Buzz with their exciting sounds. It could be acoustic or electronic or acappella. But whatever it is, it's live.

www.emu.uoregon.edu



emu ground floor | 346-0590 | mon-thu: 8:30am-midnight | fri: 8:30am-1am | sat: 11am-1am | sun: 11am-midnight

JANUARY SPECIAL

Vintage German Pressed Glass Beads

50% Off Loose Beads

25% Off Bulk Prices



Beautiful & unusual shapes & colors
Made by hand between 1920 & 1950

Harlequin

Beads & Jewelry

Sale expires 1/31

10% Off with Student I.D.

1016 Willamette ♦ 683-5903