

Professor will sing 'listener-friendly' opera

■ Mark Beudert has worked with opera companies from Great Britain to Australia

By Rebecca Wilson
Oregon Daily Emerald

University students enjoy a wide variety of music: pop, rock, indie, blues, jazz. Even the occasional country music aficionado lurks in the shadows of Eugene's music scene. But there is one music genre that, almost without exception, strikes fear into the hearts of college students: opera. However, not all opera involves sequined jumpsuits or blond women with antlers. In fact, some opera can even be classified as "listener friendly."

On Friday, the University community will have the opportunity to hear renowned tenor and University professor Mark Beudert and world-famous pianist Dalton Baldwin at Beall Concert Hall.

Baldwin, who lives in New York, is known as the "dean of American accompanists." He has worked with many famous vocalists, such as Jessye Norman and Arlene Auger.

Beudert, who is an associate professor, first received national attention in the early 1980s as an undergraduate at Columbia University. The New York Shakespeare Festival was attempting a production of "The Pirates of Penzance." As the result of a last-minute substitution, Beudert as-

sumed the role of Frederick with 25 minutes notice and no rehearsal. The performance received critical acclaim and marked his first of many opposite Tony Award-winners Kevin Kline and George Rose.

According to the Web site for the University's School of Music, Beudert has been a leading tenor with such opera companies as New York City Opera, English National Opera, Turin Opera and Scottish Opera. Beudert has performed throughout the United States and in Great Britain, Australia, France and Germany.

Beudert received a master's of music from the University of Michigan in 1991. While at Michigan, he studied vocal technique and interpretation with Professor George Shirley.

"Mark has a wonderful tenor voice," Shirley said. "He is an intense interpreter of musical literature and an excellent singing actor."

Shirley spoke of the "vocal thumbprint," which means the

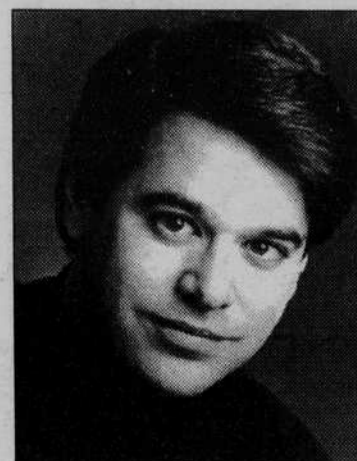
unique aspect of a singer's voice that identifies the singer to listeners. Identifying the vocal thumbprints of Eddie Vedder or Britney Spears is usually easy, because they sing unique songs and have individual styles. However, classical vocalists don't often have the opportunity to sing original work, so it is important that they find new ways of interpreting music and making it their own.

Beudert's lasting influence on music is demonstrated by the fact that he continues to be recruited by opera companies throughout the world, Shirley said.

"The fact that he's still being hired, even though he's dedicated a lot of time to teaching, speaks very highly of him as a singer," he said. "This isn't easy because he's not always available. But people are still willing to ask for Mark."

Shirley also added that Beudert's students are "fortunate to have him as a professor because his insights are still available to them."

The concert is part of the



Courtesy Photo
Mark Beudert, associate professor and renowned tenor, performs at 8 p.m. Friday night in Beall Concert Hall.

School of Music's Faculty Artist Series. The performance is Friday at 8 p.m. in Beall Concert Hall.

Tickets are \$7 general admission and \$4 for students and seniors. For more information, call 346-3761.

'Laragh' available at bookstore

Eugene poet Patricia Mees Armstrong was profiled in the Feb. 22 issue of Pulse. Her book, "The Road to Laragh and Beyond," is currently available at the University Bookstore and also at The Bookmark and Tsunami Books. Armstrong will give a performance of her poetry in honor of St. Patrick's Day at Tsunami Books on March 17 at 2 p.m.

RETIREMENT INSURANCE MUTUAL FUNDS TRUST SERVICES TUITION FINANCING

Why is TIAA-CREF the #1 choice nationwide?

The TIAA-CREF Advantage.

Call us for a free information package

Year in and year out, employees at education and research institutions have turned to TIAA-CREF. And for good reasons:

- Easy diversification among a range of expertly managed funds
- A solid history of performance and exceptional personal service
- A strong commitment to low expenses
- Plus, a full range of flexible retirement income options

For decades, TIAA-CREF has helped professors and staff at over 10,000 campuses across the country invest for—and enjoy—successful retirements.

Choosing your retirement plan provider is simple. Go with the leader: TIAA-CREF.

THE TIAA-CREF ADVANTAGE

Investment Expertise

Low Expenses

Customized Payment Options

Expert Guidance



Ensuring the future for those who shape it.™

1.800.842.2776

www.tiaa-cref.org

For more complete information on our securities products, call 1.800.842.2733, ext. 5509, for prospectuses. Read them carefully before you invest. • TIAA-CREF Individual and Institutional Services, Inc. and Teachers Personal Investors Services, Inc. distribute securities products. • Teachers Insurance and Annuity Association (TIAA), New York, NY and TIAA-CREF Life Insurance Co., New York, NY issue insurance and annuities. • TIAA-CREF Trust Company, FSB provides trust services. • Investment products are not FDIC insured, may lose value and are not bank guaranteed. © 2001 Teachers Insurance and Annuity Association - College Retirement Equities Fund, New York, NY 01/02

School of MUSIC
UNIVERSITY OF OREGON
& Department of DANCE



MARCH CONCERTS

Clip and Save this Calendar!

For more information on School of Music events, call 346-5678, or call Guardline at 485-2000, ext. 2533 for a taped message.

- Thu. DALTON BALDWIN: Voice Master Class**
3/1 Guest Artist 7 p.m., Beall Hall
\$5 General Admission
- Fri. MARK BEUDERT, Tenor**
3/2 DALTON BALDWIN, Piano 8 p.m., Beall Hall
Faculty Artist Series
\$7 General Admission, \$4 students & senior citizens
- Fri., DANCE 2001**
Sat. Annual Faculty Dance Concert
3/2-3 8 p.m. Fri.; 2 p.m. & 8 p.m. Sat., Dougherty Theatre
\$10 General Admission, \$5 students & senior citizens
- Sat. SPRING SING**
3/3 Children's Concert Series 10:30 a.m., Beall Hall
\$3 adults, \$2 children & students, or \$5 for a family
- Sun. OREGON WIND ENSEMBLE & UO SYMPHONIC BAND**
3/4 UO Ensembles 3 p.m., Beall Hall
\$5 General Admission, \$3 students & senior citizens
- Sun. UNIVERSITY SINGERS & CHAMBER CHOIR**
3/4 UO Choral Ensembles 7:30 p.m., Beall Hall
\$5 General Admission, \$3 students & senior citizens
- Mon. POETRY IN SONG**
3/5 UO voice students sing art songs. 7 p.m., Beall Hall
FREE Admission
- Tue. OBOE CLASS RECITAL**
3/6 UO Oboe Students 8 p.m., Beall Hall
FREE Admission
- Wed. FLUTE CLASS RECITAL**
3/7 UO Flute Students 8 p.m., Beall Hall
FREE Admission
- Wed. THE JAZZ CAFE with Nancy King**
3/7 UO Jazz Combos & Guest Artists 8 p.m., Gerlinger Alumni Lounge
\$5 General Admission, \$3 students & senior citizens
- Thu. THE CYPRESS STRING QUARTET**
3/8 Chamber Music Series 8 p.m., Beall Hall
Reserved seats \$10, \$20, \$25, available at the Hult Center (682-5000) or EMU (346-4363)

For our complete calendar, check: music1.uoregon.edu