

An independent newspaper

Oregon Daily Emerald



Out on a low note

The Oregon soccer team is outshot by a combined 33-9 in its final two games of the season. **PAGE 7**

A trio of sounds

Three University music school professors record a new classical CD, "The Call of the Wild." **PAGE 5**

WEATHER TODAY



MOSTLY CLOUDY
high 55, low 30

SINCE 1900 UNIVERSITY OF OREGON EUGENE, OREGON

Ducks push to win in Pullman

■ The Ducks move up to No. 6 in the nation, their highest ranking ever, after besting WSU in O.T.

By Scott Pesznecker
Oregon Daily Emerald

With a chilling wind at his back and mounds of snow encircling Martin Stadium, Oregon place-kicker Josh Frankel pulled through when the Ducks needed him most.

From 47 yards out, Frankel split the uprights on what would be the game-winning field goal in overtime, lifting Oregon over Washington State, 27-24. It happened in front of about 5,000 Duck fans, including Nike founder Phil Knight, who braved the travel and weather to watch their team play in Pullman, Wash.

The win improved Oregon to No. 6 in the Associated Press poll. Never in history have the Ducks been so highly ranked.

It appeared that Oregon was on its way to blowing out the Cougars when tailback Maurice Morris stormed into the end zone for a nine-yard touchdown run with just under two minutes gone by.

However, the Cougars answered promptly, knotting the score at seven less than 1:30 later. Despite the loss of Jason Gesser — Washington State's star quarterback, who broke his leg in the second quarter when sacked by defensive end Saul Patu — Oregon fell behind and trailed at halftime for the first time this season.

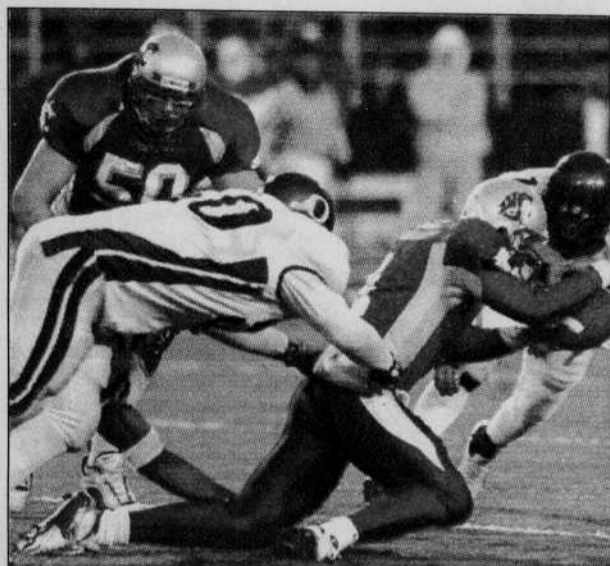
The Cougars opened the fourth quarter with an early touchdown, taking an

eight-point lead. With 9:08 to go in the fourth quarter, Oregon quarterback Joey Harrington found Marshaun Tucker in the end zone for a 38-yard touchdown pass. Harrington then connected with receiver Keenan Howry on a perfectly executed two-point conversion, tying the score at 24-24.

In the first overtime, Oregon opted to kick the field goal after struggling to move the ball down field. Frankel drained it.

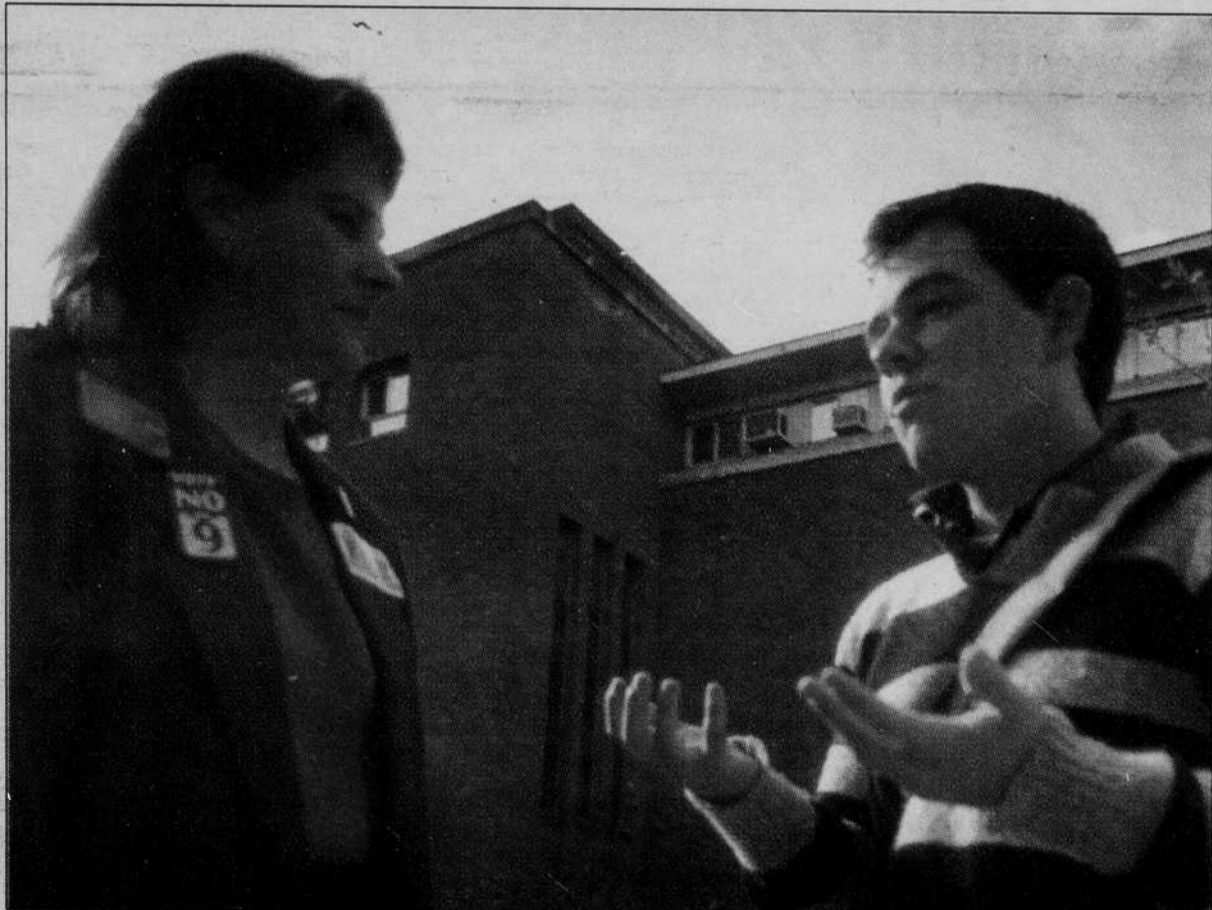
Washington State crumbled on its overtime possession, losing 11 yards on a holding penalty and another five for having 12 players on the field. On fourth-and-seven with the ball at the 22-yard line, Oregon's Jed Boice blocked the Cougars' 39-yard field-goal attempt to seal the win.

For full coverage turn to Sports on page 7



Courtesy of Washington State media services

The Oregon defense makes the plays it needs down the stretch to stave off Washington State's potent offense and save the win.



Dan Brunell Emerald

State Rep. Vicki Walker discusses transportation issues with freshmen Garret Hinds Friday at a rally in the EMU. Gov. Kitzhaber was also on hand to endorse Walker for the 41st district seat, which covers the West University area.

State politicians urge student voting

Oregon Democrats spoke to increase voter turnout — at ballot boxes

By Lisa Toth
Oregon Daily Emerald

Standing above the "World's Biggest Ballot Box" outside the EMU, Gov. John Kitzhaber and State Representative Vicki Walker, D-Eugene, encouraged students not to mail their ballots and to vote for Walker.

Kitzhaber and Walker dropped their ballots into the ballot box at the noon rally Friday, and encouraged students to

place their votes in ballot boxes, such as the "World's Biggest Ballot Box," instead of mailing them.

Most student voters don't realize that ballots must be received by 8 p.m. Nov. 7 for them to count; if they try to mail their ballots on Nov. 7, it will be too late.

Amid his statements for voter turnout, Kitzhaber also gave his support to Walker in her reelec-

tion campaign for District 41, which covers the West University area and most of campus.

Kitzhaber said he felt it was vital for students to elect a representative who shares their concerns of access to quality, affordable education, to increased student grants and to childcare for student parents.

"Because of Vicki Walker, we got college students back on the

The big green box awaits election day

■ After Tuesday's rush, the "World's Largest" will be torn down and taken away

By Emily Gust
Oregon Daily Emerald

Take one last look at the large, green ballot box in the EMU Breezeway because come next week, it will be just a pile of wood and an empty space.

Constructed more than two weeks ago by the Carpenter's Union, the "World's Largest Ballot Box" will be dismantled by the same group this weekend, and the University's Facilities Services will take the leftover wood.

"I'll probably keep a chunk for memory's sake," ASUO President Jay Breslow said.

But the box won't have completely run its course until it has survived the final election day push on Tuesday.

Ballot drop boxes are open 8 a.m. to 5 p.m. today and 8 a.m. to 8 p.m. Tuesday.

Students who are filing ballots from counties other than Lane should be aware that they must turn their ballots in to the ASUO Executive Office (not the ballot box) by 3 p.m. today, or else their vote will not be counted.

ASUO Legislative Organizer Melissa Unger said that Lane County Elections officials anticipate a flood of ballots over the next two days. They plan to empty the ASUO's box three times on Monday because they think it will be full.

Lane County Elections (LCE) report that 28 percent — 54,000 of the more than 189,000 ballots sent out — of Eugene voters had returned their ballots by 3 p.m. Friday.

LCE still expects huge lines of people wanting to submit ballots Tuesday night. Officials will accept the ballots of those who are in line before 8 p.m. Tuesday night, Unger said. But anyone there one minute or more after the 8 p.m. deadline will be too late.

One large group of voters plans to vote for certain on Tuesday.

Between 50 and 75 University students of color will collectively take their ballots to the ASUO's box at noon on Tuesday to "Drop It Like It's Hot," an effort coordinated by the Multicultural Center.

Turn to Student voting, page 5

Turn to Ballot Box, page 5