

**50¢ OFF Any Yogurt\***  
 (\*Except small cones and tines. Expires 11/12/00)

**Campus SUBSHOP**  
 Mon.-Fri. 10am-10pm  
 Sat. 11am-9pm  
 Sun. 12pm-9pm  
 1225 Alder  
 345-2434  
 Not valid with any other discounts or coupons. One coupon per customer.

**HONEY HILL FARMS**

**She Stoops to Conquer**

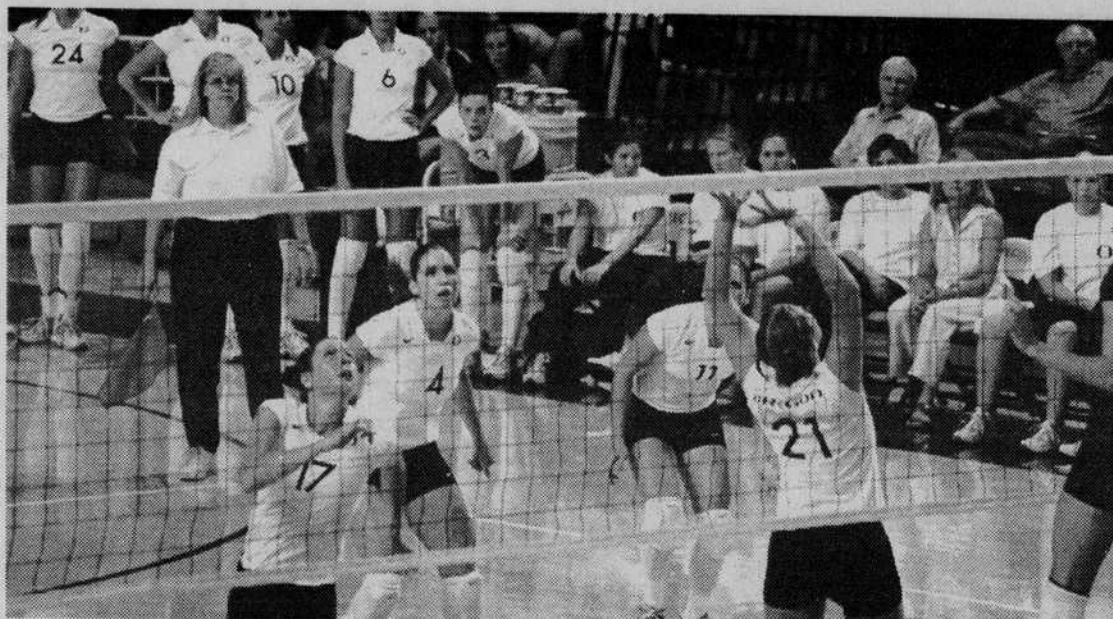
UNIVERSITY THEATRE

Robinson Theatre  
 Nov. 3, 4, 9, 10, 11  
 17, 18- 8 pm  
 Nov. 12- 2 pm

Sunday is a Benefit for  
 Habitat for Humanity  
 \$15 @ 741-1701

U of O Tix: 346-4363  
 UT Box Office: 346-4191

Comic News 89.7FM



Sophomore Sydney Chute serves up one of her 19 assists to senior Halie Mazza, who tallied 10 kills in the Ducks' loss to UCLA Saturday. Erin Swanson-Davies Emerald

ODE CLASSIFIEDS... YOUR CAMPUS MARKETPLACE

Keep the UO Campus beautiful... RECYCLE

# Ducks struggling to keep spirits up

■ Oregon is still 'passionately competing' after dropping consecutive matches to No. 4 USC and No. 8 UCLA

By Adam Jude  
 Oregon Daily Emerald

The momentum has changed. The confidence is fading. But not completely.

After being swept by both No. 4 USC and No. 8 UCLA this weekend in McArthur Court, the Oregon volleyball team (9-12 overall, 1-11 Pacific-10) is still hungry for more.

Which is something that the Ducks aren't used to.

"This doesn't damper our spirits," head coach Carl Ferreira said. "We're still fighting for some of our goals. In the past, this team may have lost their confidence already, so this is definitely a good sign."

A few years ago the struggling Oregon program would most likely be thinking about the next season, in hopes of more success. This team, however, is only getting better.

"It's almost November, and to be as passionate as we are right now says a lot about this team," Ferreira said.

Junior outside hitter Monique Tobbagi said by this time last year, the program had all but called it quits. This time around, though, the Ducks' mentality remains strong as the season comes down to the final stretch.

"I honestly feel that we can beat a top-25 team," Tobbagi said. "We just need to work on consistently executing our game plan and sustaining a high level of play."

The consistency that the Ducks needed this weekend was nowhere to be found.

On Friday night, Pac-10 leader Southern California (19-1, 12-1) rolled into Eugene and quickly rolled out with a victory.

Oregon did not go down easily, however.

"Against the number four team in the country, you have to give yourself an opportunity to win," Ferreira said. "And heading into this match, I think our emotional confidence was tremendous."

But the talent level was obviously heavy on the visitor's bench.

In a match that lasted just 90 minutes, the Trojans' Jennifer Pahl led her team with 12 kills and a .529 attack percentage en route to a

15-8, 15-9, 15-4 sweep.

"Good teams have the ability to wear you down. If they push on your shoulders long enough, you're eventually going to sit down," Ferreira said.

In the crucial game two, Oregon took a 5-2 lead, but USC quickly came back to tie and take the lead after four service errors by the Ducks.

"We were up in game two, but good teams make it hard for you to execute," Ferreira said. "We played well, but we needed to squeeze out a little more in order to win."

Tobbagi and senior blocker Halie Mazza each had 10 kills, but as a team, the Ducks were held to a .071 clip.

"You have to pass very crisply to beat the fourth ranked in the country," Ferreira said. "We needed to play at about an eight-plus or nine tonight, and I think we were at about a six-plus or seven, which is still good volleyball, but not good enough."

While Saturday's contest was a match between the Ducks and UCLA (16-5, 11-2), it should have been subtitled "The Kristee Porter Show."

While tallying 22 kills (13 in game one), three blocks and three aces, the Bruins' junior hitter made the Ducks look like falling targets in her team's 15-9, 15-10, 15-7 win.

"She is a pretty special kid," Ferreira said. "Sometimes you just wonder 'how can she get that?'"

For Oregon, setter Sydney Chute posted a .526 attack percentage on 10 kills, 19 assists and eight digs. Mazza committed just one error on 15 total attacks, while senior Amy Banducci had six kills and five digs.

"I like the way we're executing game plans, but at some point we're going to have to make some big plays," Ferreira said. "Against these top teams, you are able to find out where you're at. It's good for us to measure ourselves against these top teams. The fact that you have to play high level matches gives you the opportunity to have high level confidence."

The results were the same, but the Ducks said they performed much better this time around than when they faced the two teams in Los Angeles.

"We showed what we could do, and that's nothing to be ashamed about," Banducci said.

In hopes of brighter outcomes, the Ducks head to Arizona later this week to take on No. 5 Arizona and Arizona State.



twice as nice



**2 for 1 or 50% off**

an enrollment fee on a Keep Fit Club of Enrollment membership. Pay a one time processing fee and first and last months' EFT monthly dues and you're in! Offer expires 11/30/00

**Downtown Eugene: 686-4653**

**Gateway Sport: 741-2444**

**Santa Clara: 461-7834**

**9 Portland area locations, 2 Vancouver WA locations, Also in Salem and Medford.**

**429** Call now  
**1.800.204.2400**

**24 HOUR FITNESS**  
 www.24HourFitness.com

No other discounts can be used with this offer. Must be at least 18 years old, or 12 with parent. No cash substitutions. Incentives may be offered for enrolling in other memberships. Babysitting available for a nominal fee. Facilities and amenities may vary per location. Not all clubs open 24 hours every day. Promotion available at participating 24 Hour Fitness locations only. Offer does not apply to Sporting Clubs by 24 Hour Fitness. See club for complete details.