

Oregon Daily Emerald

www.dailyemerald.com

University of Oregon Eugene, Oregon
An independent newspaper



Lee headed to nationals — again

Oregon leader Doug Lee is making his third trip in three years to the national championships. **PAGE 5**

The Flash

ASUO exec results sealed until next term

The results of this year's student presidential election will remain withheld until early spring term.

The ASUO Constitution Court announced late Monday that it would enjoin the results of the C. J. Gabbe/Peter Larson vs. Jay Breslow/Holly Magnier race so all parties would have time to study for finals and have additional time to prepare their cases.

Bush, Gore prevail on Super Tuesday

WASHINGTON (AP) — Two-thirds of the voters in the Republican primaries Tuesday saw George W. Bush as the candidate who could win in November. But the Texas governor still was unable to expand his base of support outside the party.

McCain's overall message played well in New England, but his gamble of criticizing conservative Christian leaders may have backfired in some key states.

More than a third of voters in the Republican primaries said they had an unfavorable opinion of McCain, according to the exit polls conducted for the Associated Press and television networks by Voter News Service.

In the Democratic race, Al Gore got strong backing from Democrats, voters who liked his experience, his leadership skills and his proposed health care plans. Bill Bradley made health care the centerpiece of his campaign, but voters preferred Gore's more modest plan by a 3-1 margin.

Seven in 10 thought Gore was about right on the issues ideologically while about half felt that way about Bradley, according to the exit polls.

WEATHER

Today Thursday



RAIN

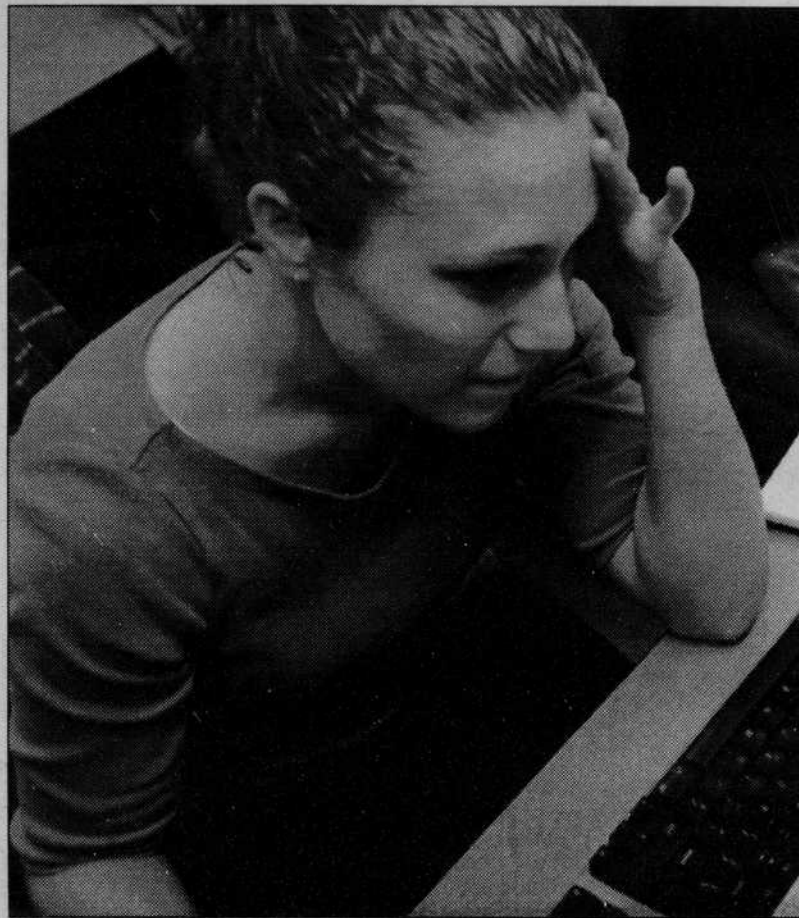
high 52, low 40



PARTLY CLOUDY

high 52, low 42

Academic anxiety



Ryan Starkweather Emerald

Senior Amanda Garcia finishes her final project for her communication design class.

When stress strikes

■ Left unchecked, anxiety from papers and final exams can lead to an array of mental and physical afflictions

By Jessica Blanchard
Oregon Daily Emerald

The stress level at the University has gone up several notches this week, as students scramble to study for tests or finish up research papers.

"Everyone's really stressed out right now," said Annie Weinsoft, a peer health educator and science major. "People tend to perceive school as being pretty stressful."

Weinsoft said she gets stressed out too — especially when professors "pile

on the tests and the papers."

But no matter how tempting it is to pull an all-nighter to cram for that killer final or to finish that dreaded 100-page paper, students need to remember that eating right and getting enough sleep is the best way to help the body to handle stress better, according to Weinsoft.

"One of the worst things they can do is eat poorly," she said. "Not practicing good nutrition robs you of energy. It makes it so you're not as able to cope

Turn to **Stress**, page 4

State Supreme Court visits UO to review cases

■ A stop by the higher court in its 'road show' of law schools provides a learning opportunity on legalities

By Eric Pfeiffer
Oregon Daily Emerald

The Oregon Supreme Court reviewed cases on search and seizure, overtime pay and new sentencing guidelines imposed under ballot measure 11 when it visited the University Tuesday.

The court's visit to the law school is an annual feature of the University's Legal Research and Writing Program. Rennard Strickland, dean of the law school, said he believes this event gives students and the public a rare chance to see the state's highest court in action.

"Hosting the justices is a great honor for the school," Strickland said.

Paul Beneke, associate director of the University's Legal Research and Writing Program, further emphasized the importance of the event to law students and the community.

"All first-year law students [were] required to attend the case hearings," Beneke said. "It's a great opportunity for them to see professional arguments at work."

Every year, the high court's visit is part of the law school's curriculum. This visit helps educate law students on the procedures in a high court and prepares them for their own mock trials during spring term, Beneke said.

The Oregon Supreme Court visits all law schools in the state as part of its yearly "road show." This is also a chance for students not involved in the law school, as well as community members, to see their state judiciary branch at work. The event also works well for the court itself, providing it with a good public relations opportunity, Beneke said.

In the actual hearings, the court reviewed three cases turned over from lower courts.

Turn to **Court**, page 3

« It's a great opportunity for [the law students] to see professional arguments at work.

Paul Beneke
associate director,
University's
Legal
Research and
Writing
Program »

EWEB rate increase hits low-income customers

University students and others on tight budgets will feel the sting from rate hikes in electric and water utilities

By Brian Goodell
Oregon Daily Emerald

Eugene Water and Electric Board commissioners voted unanimously Monday night to approve an across-the-board rate hike of 6.2 percent for electric utilities and 5.7 percent for water utilities. EWEB's first significant rate hike in 9 years takes effect April 1.

Although the increase affects most EWEB customers, the commissioners agreed to postpone a decision on Willamette Industries and the University's utility contracts by two weeks so the two customers could have adequate time to review the rate hike proposal and negotiate in-

dividual rate increases.

"This will have a bad effect on students," director of campus operations George Hecht said. "A lot of students are struggling to keep going, but as outside forces hike their rates, it's hard to maintain a tuition freeze."

Hecht, who spoke at the public hearing, requested that the board authorize a Cost of Service analysis for the University using activity-based cost accounting principles and move toward a contract arrangement for service like EWEB's other large customers, Hyundai and Weyerhaeuser.

"This increase will cost the University about \$130,000 — more than \$10,000 per month —

amounting to a nearly 9-percent increase in our rate," Hecht said. "This is a very large increase — one that promotes economic inflation in our community, and one that unfairly places an excessive burden on the University."

The six board members all agreed the hike would be difficult on low-income members of the community but said EWEB was in a do-or-die position.

"There is no shortage of concern on the board's part on the impact of rate increases on the community," EWEB commissioner Susie Smith said. "But people aren't seeing that this utility [EWEB] has absorbed all

Turn to **EWEB**, page 4

« This will have a bad effect on students.

George Hecht
director,
campus
operations »