

# UW in a hole facing ominous WSU

■ Washington hopes momentum has shifted as intrastate rivalry game with Cougars approaches

## PAC-10 NOTES

By Jeff Smith  
Oregon Daily Emerald

Maybe point guard Senque Carey shifted the momentum for the Washington Huskies.

Maybe Carey's sweet-looking "long-range shot that hit nothing but net" with less than a second left to beat California 54-52 — which ended a six-game losing streak — can turn around his team's season. A season that thus far, has been anything but sweet.

But as the Huskies (7-13 overall, 2-6 Pacific-10 Conference) prepare for the Apple Cup "show-down" against the 0-8 Washington State Cougars on Saturday, head coach Bob Bender knows that it's going to take a whole lot more than one three-pointer to get this ship turned around.

"Record-wise, we're in a sizable hole," Bender said. "We've been through, in one season, about all the emotion we've been through in six years. Now, coming off a win, maybe we can finish strong."

Bender is not lying when he speaks about an emotional roller-coaster. His Huskies opened league play by beating UCLA, 63-62, but then followed that with six straight losses, including overtime defeats to co-Pac-10 leaders Southern California and Oregon.

Onto the Apple Cup they go.

## Bruins in Rush to get on top

Three days after falling to Oregon — and further back from the league leaders — UCLA is attempting to reinstate its suspended sophomore guard JaRon Rush.

Rush, who was the Bruins' third leading scorer a year ago when he started 22 of 28 games, has not played since UCLA's 100-39 dismantling of Morgan State on Dec. 1.

He was suspended by the school on Dec. 10 for an NCAA violation in which he admitted that he was friends with a sports agent and accepted \$200 from him during the 1998-99 academic season.

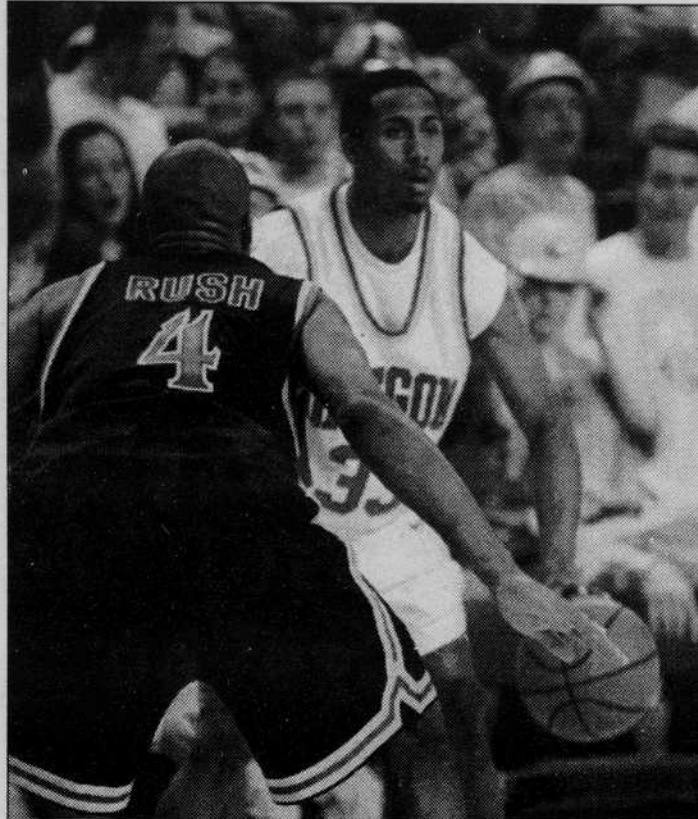
On Tuesday, UCLA Athletic Director Peter Dalis announced that the school would appeal one of the two penalties to the NCAA Subcommittee on Student-Athlete Reinstatement.

The Bruins will not appeal the first penalty, which required Rush to repay the \$200 in addition to suspending him for half of the regular season.

But the second penalty will be contested. That makes sense, because in that case, Rush is suspended for the rest of the season and for the first 17 games of next season. On top of that, he would have to repay \$6,125 for the value of gifts that he reportedly received from an unidentified AAU coach when he was still deciding on attending UCLA.

Dalis, for one, said he is going to do everything he can to help get Rush back on the court.

"Given the facts of the case as we know them, we will appeal the second penalty on JaRon's behalf," he said.



Emerald Archives

Since he was suspended by the NCAA in December, the only defense that UCLA forward JaRon Rush has played has been on his own behalf.

## ESPN predicts NCAA Tourney...

Don't look now folks, but Selection Sunday is currently 42 days away. But ESPN.com people jumped ship and predicted its own 64-team tournament.

And the Pac-10 schools were well-represented with five — count 'em, five — teams among the group. They predict Stanford

will be the No. 1 seed in the West Region; Arizona the No. 2 seed in the East; UCLA the No. 7 seed in the Midwest; and USC to be the No. 9 seed in the East.

As for Oregon? They predict the Ducks to be the No. 5 seed in the South region paired against Saint Louis. The first-round match up would take place on March 17, in Nashville, Tenn. You never know.

# Pac-10 race dependent on Cardinal rule

■ All of Pac-10 could benefit from some Maples Magic as UCLA travels to Stanford Thursday with first place at stake

## PAC-10 NOTES

By Scott Pesznecker  
Oregon Daily Emerald

The magic of Maples Pavilion was evident when Stanford came back from a 26-point deficit to beat Oregon, 78-62 on Jan. 15.

Although the Maples mystique was obvious long before the season began. The Cardinal is 266-68 on its home floor, and a remarkable 178-9 between 1987 and 1999.

Now, with three teams tied for second place, the Ducks are hoping that the winning tradition at Maples carries on — against UCLA on Thursday.

For the time being, the Bruins have sole possession of first place in the conference with a 6-1 record, followed by Stanford, Oregon and Arizona in a tie for second. If Stanford can beat No. 15 UCLA and remain undefeated at home in the Pac-10, then the Cardinal will also take a share of first place.

And considering Stanford's performance against ranked teams this season, those prospects look good.

"Maybe it's the motivation," Stanford head coach Tara VanDerveer said. "I can't explain it, but we get fired up against Tennessee, or Iowa State, or if Oregon is coming in here or Arizona, and we've done really well. Maybe it's not feeling the pressure — maybe that's a good thing for this team."

If UCLA, Stanford and Oregon are the teams tied for first come Saturday, that means the Wild-

cats will be 4-4 in conference play, and will be more or less out of the title race.

The Cardinal is doing everything it can to gain advantage against the Bruins, including the online sales of a ticket package that includes a pre-game dinner and a post-game event. Also, the first 500 fans receive free Pac-10 t-shirts.

## Superstar

Opponents know how intimidating VanDerveer can be when she's pacing the sideline, barking commands.

Her coaching ability is no mystery. But before she and her team headed across the bay to face California two weeks ago, VanDerveer was in Los Angeles, trying out a different talent: acting.

The head coach of the 1996 U.S. Olympic Team will appear in a Nike commercial with WNBA superstar Chamique Holdsclaw and colleagues Bill Fennelly from Iowa State and Rutgers' Vivian Stringer.

Reportedly, the commercial takes place in a hardware store, with Holdsclaw working the checkout counter. VanDerveer initially had no speaking parts, but the director ordered some lines be written for her after the first couple takes.

## Lacking Lackey

If one word could summarize the recent offensive effort of Arizona's Angela Lackey, that word would definitely not be consistent.

After a home-court loss to UCLA two weeks ago, Wildcat head coach Joan Bonvicini challenged her starting forward by giving freshman forward Krista Warren her place in the starting lineup.

Bonvicini's message seemed to get through. In the ensuing 67-52

win over Southern California, Warren scored a season-high 15 points on 7-of-9 shooting, plus four rebounds in 21 minutes. However, it was Lackey who stole the show, collecting 23 points, three rebounds and two steals in

21 minutes.

But Lackey's offense deserted her again when Arizona played Arizona State at home Sunday. She hit a dismal 1 of 5 from the floor in 24 minutes, although the Wildcats won 60-58.

**Kaplan Classes starting soon**

**SAT** February 14th

**DAT** February 15th

**GMAT** April 2nd

**LSAT** April 9th

**KAPLAN®**

**1-800-KAP-TEST**  
www.kaplan.com

**Top Girls**  
Caryl Churchill

Robinson Theatre

Jan. 28, 29  
Feb. 3, 4, 5  
11, 12 8PM  
Feb. 6 2PM

Feb. 6 Matinee  
for the  
Community Alliance of Lane Co  
Call 485-1755 for ticket information.

UT Box Office: 346-4191  
EMU Ticket Office: 346-4363  
Hult Center: 682-5000

**Cancer:**  
What are you doing this weekend?  
Check your

**GM Goodwrench Service Plus**

**29 MINUTES OR LESS OR your next Lube Service is FREE!\***

On Most GM Vehicles

**SERVICE WHILE YOU WAIT**

- Lube, oil & filter • Vehicle Inspections • Tires Rotated • Wheel Pack • 39 Point Safety Inspection • Transmission Fluid & Service
- Wiper Inspection & Replacement • Differential Service • Radiator Inspection Service • Lighting System Check & Bulb Replacement

• **Goodwrench Service • Close to Campus • Option to leave your car there when in class • Hit us at Lunch time... we're that quick!**

You'll get a LIFETIME GUARANTEE\*\* on parts and labor. Plus competitive up-front pricing and courtesy Transportation.

**No Appointment Needed!** We'll give you more than just an **OIL CHANGE \$16.95** originally \$24.95!

Includes up to 5 quarts of GM Goodwrench Motor oil, a new AC Delco Oil Filter, Chassis lube and ten-point maintenance check, all in 29 minutes or less! Restrictions may apply to some vehicles.

**NO COUPON NEEDED! Everyday low price.**

**ROMANIA Chevrolet**

**GM Goodwrench Quick Lube Plus**  
The Plus means better.  
\*See dealer for details. On most vehicles. \*\* See us for guarantee details

**2020 Franklin Blvd., Eugene • 465-3588 • Open Mon-Fri 7:30-5:30**