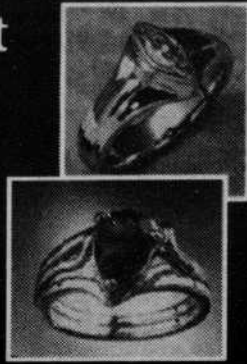


## Valentine Spirit Rings Clear!

Price is not the only indicator of value. It is also a combination of integrity, quality, service and experience!



JEWELRY ART STUDIO  
169 E. Broadway • 343-2298  
Mon-Fri 10-6 p.m. Sat 10-4 p.m.



# Measure seeks beer garden

■ The senate approves three ballot measures that must now be approved by the constitution court

By **Jeremy Lang**  
Oregon Daily Emerald

The University is now a step closer to regaining the ability to buy beer on campus.

Wednesday night the Student Senate approved a ballot measure to build a beer garden, on campus, funded by the student incidental fee.

This is only the preliminary step to making the beer garden a reality. The ballot will now be passed on to the ASUO Constitution Court for approval. If the court approves the measure, students will vote on it in the ASUO student election in a few weeks.

Students lost the one place beer was served on campus when the Collier House and Clancy Thurber's Pub closed in September for financial reasons.

Senate President Jessica Timpany said she hoped that the beer garden would also increase voter

turnout by giving students something they'd really want to vote on.

The senate also approved three other ballot measures to the court, concerning how grievances are filed, how fast the court must rule on a grievance and whether a fund to the Career Center should continue.

It also rejected one ballot measure that would have given the court only five business days to hand down rulings on election procedures and placing measure on the ballot. The measure is now dead.

The court must decide on ballot measures passed by the senate or the ASUO Executive by Tuesday.

The senate also filled one of its vacant seats by reappointing David Sanchez, who resigned from the senate at last week's meeting.

Sanchez told the senate he resigned because he could not continue to pay for his school and was withdrawing from the University. But he then found out he did have the necessary money to stay.

The senate approved Sanchez quickly and unanimously.

It also approved second-year law student Robert Raschio to the

### Highlights

The senate approved three ballot measures for the student election, including one that would build a beer garden on campus.

The measures must be approved by the ASUO Constitution Court before they go to the students for a vote.

David Sanchez was reappointed to the senate after resigning last week. Sanchez left because, at the time, he thought he would have to withdraw from the University.

constitution court. Raschio said he is a strong supporter of the incidental fee system and doesn't mind seeing the court take an extended period of time to decide on a case.

"The [U.S.] Supreme Court can take six or eight months to make a ruling," he told the senate.

The court has been in need of a second-year law student since Justice Glen Banfield resigned on Jan. 19. The court needs at least two second- or third-year law students in order to make rulings.

# ASUO ELECTIONS 2000



Make a change and get involved.

### Deadlines:

Jan. 28: Deadline for candidate filing

### Ballot measure deadlines:

Feb. 1: Ballot measures by referendum

For more information contact the ASUO Elections Board at 346-3724 or [asuoelec@gladstone.uoregon.edu](mailto:asuoelec@gladstone.uoregon.edu). You can also stop by the ASUO office, Suite 4, EMU.

## Calendar

### Thursday, Jan. 27

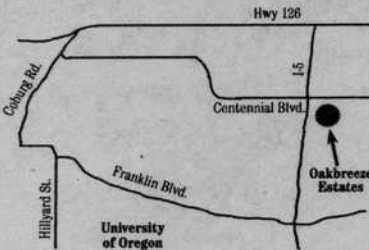
Programs Finance Committee hearing will be held from 5 to 9 p.m. For more information call 346-0623.

The EMU Budget Committee hearing will be held from 3:30 to 5:30 p.m. in the EMU Board Room. The Outdoor Program and food services will be discussed. Sponsored by the EMU Board. For more information call 346-3720.

# Fleetwood

## Manufactured Home Center

Looking for the perfect home at the right price close to U of O? We have it for you!



Your choice of 20 manufactured home lots. Complete turnkey packages starting as low as \$117,000. 6 minute bike ride to U of O campus and 2 minute bike ride to Autzen Stadium. Call today about this fantastic location.

lots located at Oakbreeze Estates (off Centennial Blvd.)  
model homes located on Hwy 99N in Eugene

[www.sunbursthomes.com](http://www.sunbursthomes.com)

Fleetwood of Oregon

461-9546 • 888-542-8185

# MSEFA

## Bringing Accounting and Financial Skills Together

### Master of Science in Financial Analysis

Many companies need more than good accountants; they require financial analysts who understand the larger business picture. In the past, the only graduate level program fitting this bill was an MBA program. Now you can earn a masters degree integrating accounting and finance in just one year. Completion of the program will also meet the recent requirement that students have five years of education prior to sitting for the CPA exam.



PSU is the only university in the Pacific Northwest offering a masters program in Financial Analysis (MSFA). It was developed with input from executive practitioners and built on the strength of the top-rated accounting program in the state.

So whether your aim is to advance in your business career or to meet the new CPA Exam requirements, PSU's MSFA program will give you the combined accounting and finance skills you need.

The PSU MSFA program. Innovative. Responsive. Built on years of expertise.

# PORTLAND STATE UNIVERSITY

SCHOOL OF BUSINESS ADMINISTRATION

Program is fully accredited by AACSB.

For further information contact us at (503)725-3712

<http://www.sba.pdx.edu>

For a first hand look at the program, join us:

**MSFA Program Informational Session**  
Tuesday, Feb. 1st  
5:30-6:30 p.m., Room 290  
Thursday, March 9th  
6:00-7:00 p.m., Room 290  
School of Business Administration

## Oregon Daily Emerald

P.O. Box 3159, Eugene OR 97403

The Oregon Daily Emerald is published daily Monday through Friday during the school year and Tuesday and Thursday during the summer by the Oregon Daily Emerald Publishing Co. Inc., at the University of Oregon, Eugene, Oregon. A member of the Associated Press, the Emerald operates independently of the University with offices in Suite 300 of the Erb Memorial Union. The Emerald is private property. The unlawful removal or use of papers is prosecutable by law.

### NEWSROOM — (541) 346-5511

**Editor in chief:** Laura Cadiz  
**Managing Editor:** Felicity Ayles  
**Community:** Sara Lieberth, editor. Darren Freeman, Brian Goodell, reporters.  
**Freelance:** Eric Pfeiffer, editor.  
**Higher Education:** Ben Romano, editor. Jessica Blanchard, Serena Markstrom, reporters.  
**Perspectives:** Bret Jacobson, Laura Lucas, editors. Fred M. Collier, Jonathan Gruber, Beata Mostafavi, Mason West, columnists.  
**Pulse:** Jack Clifford, editor. Sara Jarrett, Yael Menahem, reporters.  
**Student Activities:** Jeremy Lang, editor. Cathlene E. McGraw, Simone Ripke, Edward Yuen, reporters.  
**Sports:** Mirjam Swanson, editor. Scott Peszneckner, assistant editor.

**Matt O'Neill, Jeff Smith, Brett Williams, reporters.**  
**News Aide:** Lorraine-Michelle Faust.  
**Copy:** Monica Hande, Laura Lucas, copy chiefs. Molly Egan, Tom Patterson, Eric Qualheim, Ann Simmons, Jamie Thomas, Ellen Weisz, copy editors.  
**Photo:** Catharine Kendall, editor. Mike Crisp, Azle Malinao-Alvarez, photographers. Matthew Landan, Tom Patterson, Lindsey Walker, photo technicians.  
**Design:** Katie Nesse, editor. Kelly Berggren, Leigh-Ann Cyboron, Katie Miller, designers. Bryan Dixon, Giovanni Salimena, illustrators.  
**On-line:** Jake Ortmann, editor. Timur Insepev, webmaster.

### ADVERTISING — (541) 346-3712

Becky Merchant, director. Melissa O'Connell, Van Nguyen, advertising assistants. Rachelle Bowden, Doug Hentges, Nicole Hubbard,

Jesse Long, Adam Rice, Amy Ruppert, Hillary Shultz, Chad Verly, Emily Wallace, Lisa Wood, advertising sales representatives.

### CLASSIFIEDS — (541) 346-4343

Trina Shanaman, manager. Erin Gauthier, Lauren Howry, Tara Rothermel, staff.

### BUSINESS — (541) 346-5512

Judy Riedl, general manager. Kathy Carbone, business supervisor. Sarah Goracke, receptionist. Michael Higgins, John Long, Sue Ryan, Jesse Wallace, distribution.

### PRODUCTION — (541) 346-4381

Michele Ross, manager. Tara Sloan, coordinator. Goro Harumi, Laura Lucas, Laura Paz, Ross Ward, ad designers.