

# candidate statements

## position descriptions

### ASUO Executive

The ASUO Executive is the recognized voice of the UO students and administers over 80 funded ASUO programs. The ASUO President is the chief officer of the executive. The president may run with a designated Vice President, or may run alone. Staff members are hired by the President's hiring committee after s/he is elected. The executive may undertake many projects according to the President's wishes.

### Associated Students Presidential Advisory Council (ASPAC)

ASPAC is an 11-member committee that meets at least twice each term with the University President. The objective of this board is to advise the President of matters affecting the student population. Additionally, ASPAC improves student/administration relations and communications between students, student boards and programs. This board is concerned with providing the University President with a sense of the diverse student population and the full spectrum of student opinion.

### Student Senate

According to the ASUO Constitution, the Student Senate has two major functions. First, it is responsible for distributing more than 5.4 million dollars in incidental fees to three major programs: ASUO Programs, The Erb Memorial Union (EMU) and the Athletic Department.

The second function of the Student Senate is to represent UO students in the faculty-student University Senate and University Assembly, which debate and set general University policies. Senators also sit on student-faculty committees, run the information and grievance table in the EMU Lobby, approve ASUO Executive appointments and hold regular office hours each week.

The Senate is composed of 18 members: Three senators serve as members of the ASUO Programs Finance Committee, three serve as members of the EMU Board and three as members of the Athletic Finance Committee. These nine senators are known as the "Finance Senators". The remaining nine senators are elected by major to represent academic departments and are referred to as "Academic Senators" (all two-year seats).

### ASUO Programs Finance Committee

The ASUO Programs Finance Committee, composed of seven members, bears line item budgets from over 80 ASUO Programs.

### Athletic Department Finance Committee

The Athletic Department Finance Committee, composed of five members, is responsible for working with the Athletic Department to develop a recommendation for the incidental fee allocation for the Athletic Department. This recommendation is forwarded to the Student Senate for final approval.

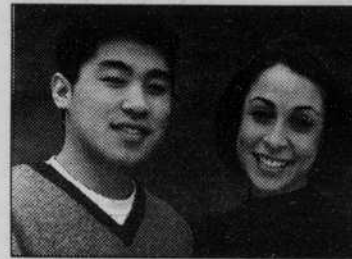
### The Erb Memorial (EMU) Board

The Erb Memorial board determines the policies and long range planning of the EMU. A House Committee deals with the allocation of office space, EMU Lobby space and other issues associated with the building. The Budget Committee prepares the budget for the EMU and all of its programs (Cultural Forum, Child Care Center, Outdoor Program, etc.) and presents it to the whole board.

### Building Fee Committee

This student campus planning and construction committee is identified as part of the established campus planning process. Representatives review proposed capital construction projects funded by the student building fees. May also request consideration of additional projects or project modifications that the committee or student members identify independently. Representatives advise student government officials whether a project should be recommended and advocate funding priorities for proposed capital construction projects.

## President/Vice



### Mitra Anoushiravani and Wylie Chen

**Wylie Chen**  
Major: PPPM  
Minor: Business Administration  
Hometown: Beaverton, OR  
Recent positions held:  
ASUO Student Senate - Vice President & EMU Board Finance Senator; Women's Center Advisory Board; ASUO Executive Outreach Director, 1997-98; ASUO Executive Projects Coordinator, 1996-97

**Mitra Anoushiravani**  
Major: Political Science and Theater Arts  
Minor: Music  
Hometown: Milwaukie, OR  
Recent positions held:  
EMU Board - Vice Chair & At-Large Representative; UO Resident Assistant; ASUO Executive Legislative Intern; Leader Scholar, Hamline University, 1997-98; Student Congress, Hamline University, 1997-98

Our objective is to reach all students on campus — rather than that traditionally limited demographic most often addressed in Student Elections.

We pledge not to just make hollow, insubstantial promises of solutions to campus issues; rather we will present you with tangible, detailed plans to solve the most pressing problems we see affecting students, and more importantly those you present to us ... it's the least we can do.

- Quicker internet dial-in access
- Better, brighter lighting on campus
- Freeze tuition for everyone: in-state, out-of-state and international students
- Create accessible, more affordable child care for student families
- Increase student representation on the University Senate
- More financial aid grants
- Retain student seats at MacCourt and Autzen
- Sponsor more campus events
- Increase ASUO outreach through the Emerald, newsletters and general publicity
- Strengthen all programs with personnel and resources, and the re-establishment of programs that students support

- Improve housing contract flexibility
- Better relations with EPD and OPS

Concerns or questions:  
wylie@gladstone or mitra@gladstone  
Wylie & Mitra for ASUO Executive.

### Michael Atkinson

(no statement)



### Brett Bettin

This is the way I see it, life is too short to have to worry about what piddling little wastes of time the ASUO Exec. is spending student money on. As a solution I propose a complete disintegration of the current functions of the ASUO Exec. Instead of doing anything that might possibly seem to be beneficial or important, I would re-order the Execs functions to host slumber parties and make cameo appearances on local news programs and talk radio shows. This should not adversely affect the majority of the students at the U of O since none of us know what the actual functions of the ASUO Exec. consist of, aside, of course, from becoming involved in scandalous activities and anti-constitutional activities.

In summary, there are three reasons why you should vote for me:

I am the least qualified student on this campus to fulfill the duties of this position. This is because I am willing to accept that there is no real function to the ASUO Exec, and I will not waste your time trying to convince you that I am doing something useful.

I am really tall. In fact, I am a giant and therefore a minority. By voting me into office you will be doing your part to stop the rampant spread of heightism within campus politics across the nation.

I will not even be here next year.

So when you're standing in line this spring trying to decide who the best candidate for ASUO Exec, Vote for me, Brett Bettin. I'm shiny clean and only eleven.

### William Beutler

(no statement)

### Nick Bostic

(no statement)

### Brandon Hartley

(no statement)



### Tamir Kriegel

(no statement)



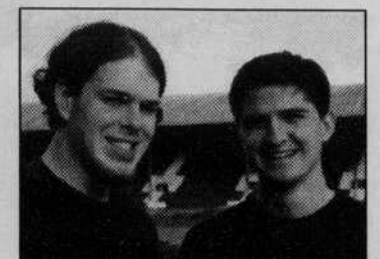
### Melissa Logan

As a former pro wrestler for the Oregon World Wide Wrestling Farce (OWWF), I think that my previous experience will be valuable to the ASUO Executive. Back in the day, I was referred to as Melissa "Logan Logan" Logan. I will continue my legacy into the following year with my campaign to become President of the ASUO. I'm the candidate of many names. Namely, "Logan Logan" Logan.



### Ed Madrid

Bring down Student Government.  
Elect Ed.



### Dan Reid & Matt Swanson

Students at the University of Oregon:  
We're here for 4, 5, or in some cases 6 years. We learn how to live, how to love, how to think, and how to have fun.  
All of us have different interests and we put our time and efforts towards different things. We, Dan Reid and Matt