

Volleyball

Continued from Page 11A

game, but for some reason we keep putting ourselves at disadvantages after big wins."

Oregon had 16 kills to UCLA's 17 in the game, but committed 10 errors for a .143 attack percentage.

Despite the Game 2 loss, and falling behind 5-0 in Game 3, the Ducks persevered and again pulled ahead on two service aces by Madeline Ernst. With Oregon down 11-12 and Tonja Nikolic serving, the Ducks scored four straight points to clinch the win.

"We realized how good we are," Nikolic said. "We passed really well, and we blocked well, but it's still a loss and that's frustrating."

The Ducks had a two game to one advantage going into Game 4, but proved that consistency is still a thorn in their side. UCLA

played its best game of the match scoring eight straight points before Oregon had the chance to score. The Bruins had 16 kills and just three errors for an overall attack percentage of .394. Oregon recorded almost as many errors as kills and posted a .045 overall attack percentage.

"It really hurts us when we have a big win in Game 1 and a let down in Game 2, then a big win in Game 3 and a letdown in Game 4," Nelson said. "We have not had a level of consistency that we need to be at."

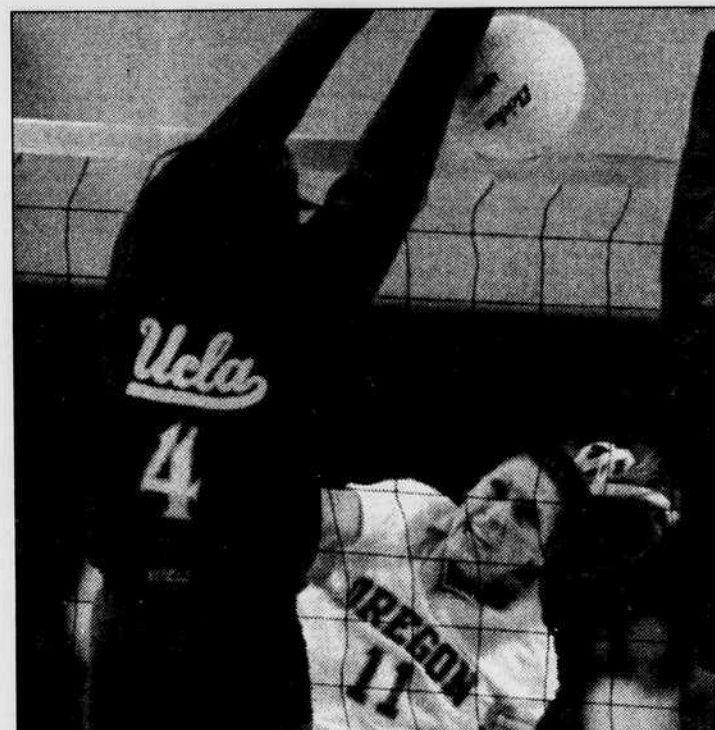
Game 5 was not pretty for either team as both teams had just seven kills and UCLA had the higher overall attack percentage, a disappointing .074. Oregon again found itself with an early deficit, but managed to rally back and lost by just three points.

Oregon had four players who recorded kills in double digits,

but also had three players with negative overall attack percentages. Ernst led the Ducks with 26 kills, followed by Alli White and Monique Tobaggi, who recorded 17 and 12 kills, respectively. Nikolic tallied 11 kills and only two errors, leading all players with an overall attack percentage of .375.

UCLA was led by Pac-10 player of the week Kristee Porter who had 26 kills and 13 digs. The Bruins had three players who recorded 15 or more kills and four players with 10 or more digs.

"I think the fact that we've had a tough schedule early and played some tough teams and seen the other side of it helped," UCLA head coach Andy Banachowski said. "Oregon played a great match, but we just hung in there and managed to squeak this one out."



Oregon fell to 6-16 as UCLA dominated the Ducks in last night's game.

Oregon holds on to finish eighth in Stanford Invitational

The Ducks play well in the last round to make up for poor stats earlier

By Scott Pesznecker
Oregon Daily Emerald

Nobody from the Oregon women's golf team ever said playing in the Stanford Invitational would be easy.

The tournament invited 10 of the top 25 teams in the nation, including each member of the Pacific-10 Conference.

To make the tournament even

more critical to the No. 12 Ducks, it was held at the Stanford Golf Club — the site of the Pac-10 Championships this spring.

Before the invitational, women's head coach Renee Baumgartner said the women should finish easily inside the top 10.

She was almost wrong.

Oregon fought back in the final round of competition to finish in eighth place with a final team score of 912. The Ducks' third-round team score of 290 was surpassed only by Arizona's 287.

Although she did not lead the team in scoring, Karen Bristow was huge on the third day of competition. She led the Ducks' comeback with a three-under-par score of 70 on Sunday. Bristow finished tied for



24th in individual scoring with a total of 227.

Jerilyn White led the Ducks in scoring, finishing in a tie for 14th place with a score of 224. She

played consistently throughout the invitational by shooting 73-77-74.

However, Oregon did not.

Neither Pam Sowden, nor Claire Hunter, nor Dawn Berry shot lower than 80 on Saturday, but both Sowden and Berry played well on Sunday. Sowden shot a 74 to finish tied for 41st, while Berry shot a 72 to tie for 48th. Hunter finished tied for 73rd.

Arizona won the invitational with a final team score of 287,

stealing the victory from Stanford, which led the pack through the first two rounds. The Cardinal finished in second place with a final score of 294.

Jenna Daniels of Arizona and Elisha Au of Washington tied for the individual title. Indiana's Erin Carney and Arizona's Cristina Bae tied for third.

Oregon was in 15th place after the first two rounds. Dawn Berry, who led the Ducks in scoring on Friday, lost her 25th-place individual ranking by shooting an 86 on Saturday.



MONDAY, OCT. 26TH, 1998
7:00 TO 9:00 PM
EMU BALLROOM
UNIVERSITY OF OREGON

SPONSORED BY THE PUBLIC
HEALTH SERVICE'S OFFICE
ON WOMEN'S HEALTH
(WITHIN THE U.S. DEPT.
OF HEALTH AND HUMAN
SERVICES)

PRESENTED BY THE UO HEALTH
CENTER'S HEALTH EDUCATION
PROGRAM, THE CENTER
FOR THE STUDY OF WOMEN IN
SOCIETY, UNIVERSITY HOUSING
AND THE ASUO

WE INVITE YOU TO ATTEND
AND IT'S FREE!



National College Roundtable on Women's Health

What Is It?

An interactive discussion of health issues confronting women, question/answer session with national and community experts and presentation of an award-winning video.

What's the Point?

To provide women with information they need to make informed health decisions.

How Can I Learn More?

Please contact the UO Health Center's Health Education Program at 346-2728 or by email to heahead@oregon.uoregon.edu for more information.

<http://darkwing.uoregon.edu/~uoshc/roundtable.html>

UNIVERSITY
HEALTH CENTER
We're a matter of degrees ♦

Open daily 8 a.m. to 6 p.m., except Tuesdays (9 a.m.) and Sundays (10 a.m.).
Appointments and after hours: 346-2770 • Web: darkwing.uoregon.edu/~uoshc

