

All Ways Travel

Eugene To:
 Tokyo - \$735.00*
 Osaka - \$705.00*
 Nagoya - \$735.00*
 *Tax not included, restrictions apply.
Eurail passes issued instantly and no service/ticket fees!
E-mail: awt@luv2travel.com
 1200 High St.
338-4199
 Student Travel Experts

\$2*
off everything

LAZAR'S BAZAR

687-0139
57 W Broadway
 behind the downtown branch of US Bank

<http://lazars.com>
 *Purchases over \$20.00
 Coupon Expires 6/20/98

Club: ROTC finishes fourth at Swoosh Challenge

Continued from Page 7
 Leslie Kindling, Adrian Broadhurst, David Nash and Heather Gallo. Oregon Recreation and Intramural director Brent Harrison served as regional representative. Based on the accumulated points from each event, the top four teams advanced to a head-to-head timed run of the obstacle course. Oregon missed the cut by one team.

Unofficial results had Eastern Michigan taking top honors, Navy coming in second, Florida State and Syracuse tying for third place and Oregon finishing fourth overall.

Nash said the Ducks' goal was just to make it to nationals. "Four out of 11 really doesn't sound too good," Nash said. "But when you think about the level of competition that was there — it was at such a high level — we felt like we placed well."

Each of the teams competed in five events shuttled between the Universal Studios back lot and the fitness capital of the world, Venice Beach. The better a team did in an event, the more points it got. Championships were held between the top finishers of each event, and the top four overall scorers moved on to the title round.

Saturday morning, the teams ran, biked and in-line skated their way through backdrops of Beaver Cleaver's residence and the locale for the infamous fight between the Three Amigos and El Guapo in the Endurance Challenge at Universal Studios.

Later in the day, the teams basked in the Venice Beach sun, where the tug of war, the rock — a revolving wall-climbing event

— shuttle run, obstacle course and finals were held.

Nash said his favorite event was the Endurance Challenge.

"We ran through the facades — which were the fake fronts of some Universal back lots," Nash said. "I haven't been there in 10 or 12 years so it was really interesting to see all the changes."

The tug of war at Venice Beach proved to be the most challenging event, Nash said.

"The tug of war on the sand was extremely difficult. We had no footing," he said. "The championship match went on for 12 1/2 minutes. There were people just pulling and getting nowhere."

"But having the events down at Venice Beach was a great opportunity for us Oregonians to get some sun. I'm peeling now because of that."

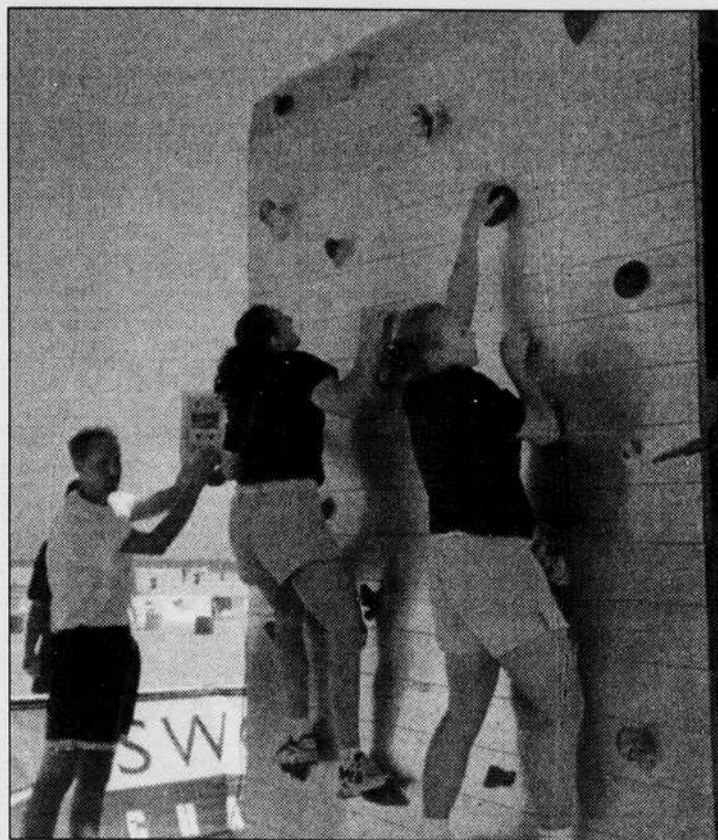
Harrison said overall it wasn't just the experience gained in the competition and atmosphere that made the Challenge memorable, but the association with the other teams as well.

"Meeting teams from across the country and having that camaraderie amongst each other was great," Harrison said. "After finishing up events, we talked about them and strategically planned for future events and built this bond between these other people."

"We went out after the competition on Saturday night," Nash added. "It didn't matter which part of the group you were with because everyone was getting along really great."

Nash said all the competitors were there for a reason other than winning the national title.

"It seemed liked everyone was



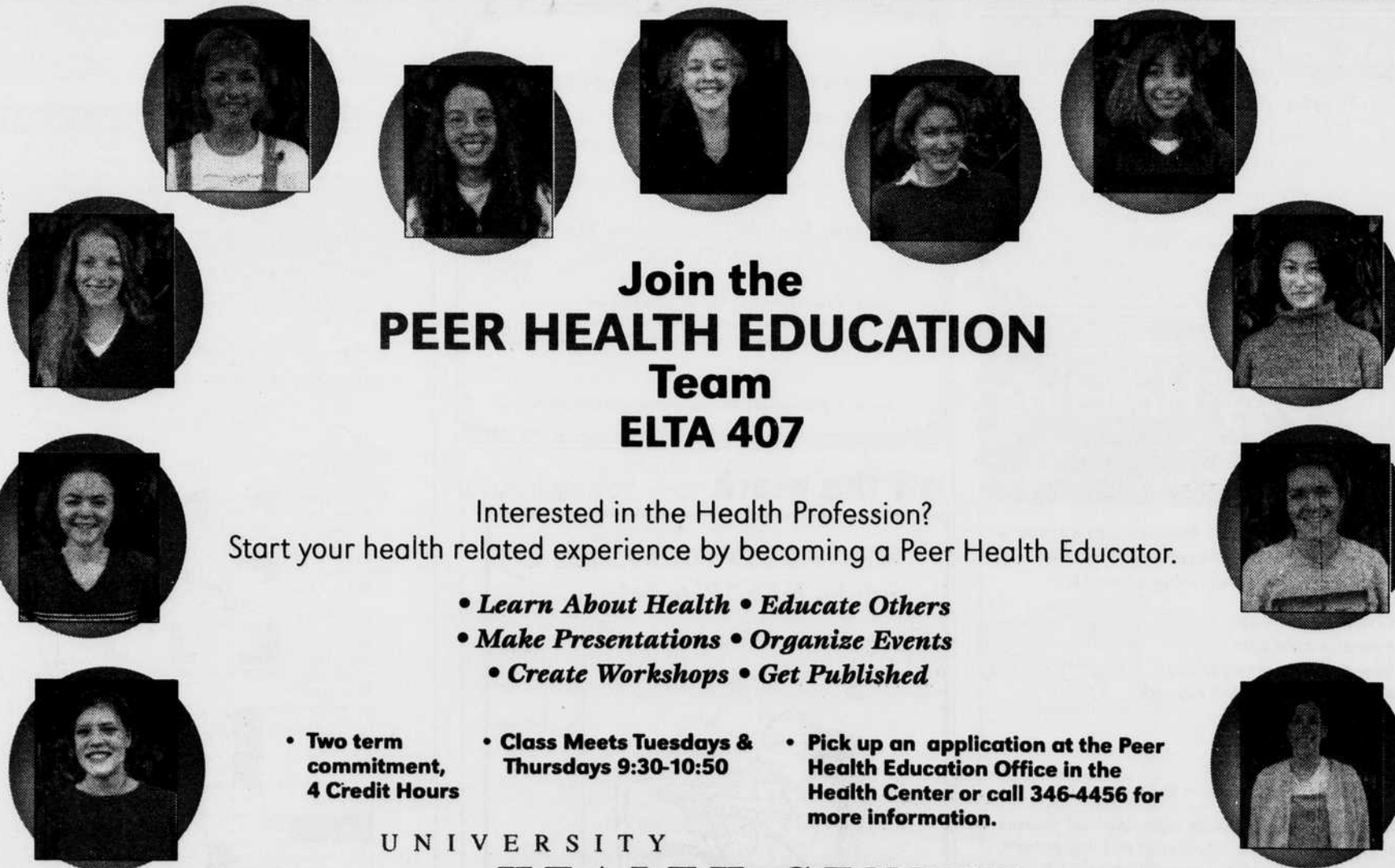
COURTESY PHOTO
 Leslie Kindling (left) and Heather Gallo climb The Rock during the Nike Swoosh Challenge in Los Angeles last weekend.

interested in getting fit," Nash said. "The guys were really muscular and the girls were really toned. All were great runners and athletes."

This is the second year of existence for the Challenge. Last year, it was restricted to Nike-sponsored teams and the events were held at Nike Headquarters in Beaverton. Oregon ended up placing second out of four teams.

This year, the Challenge was presented by Aquafina and Diet Pepsi, with Nike serving as a contributor, and so competition was opened up to all national universities.

"We're hoping that because of the Challenge's success, the sponsors are going to be interested in supporting it in the future and for this to be a continued event," Harrison said.



Join the PEER HEALTH EDUCATION Team ELTA 407

Interested in the Health Profession?
 Start your health related experience by becoming a Peer Health Educator.

- Learn About Health • Educate Others
- Make Presentations • Organize Events
- Create Workshops • Get Published

- Two term commitment, 4 Credit Hours
- Class Meets Tuesdays & Thursdays 9:30-10:50
- Pick up an application at the Peer Health Education Office in the Health Center or call 346-4456 for more information.

UNIVERSITY
HEALTH CENTER

We're a matter of degrees ◆

Strengthen your resume through experience

Hurry, space is limited for Fall '98

Open daily 8 a.m. to 6 p.m., except Tuesdays (9 a.m.) and Sundays (10 a.m.).
 Appointments and after hours: 346-2770 • Web: darkwing.uoregon.edu/~uoshc
 Located at 13th & Agate