

Frank: Setup pushes students away

Continued from Page 7A

out the bleacher seating behind the team benches and behind the south basket, which before was student seating, to add theater-style seating.

The new setup cut down on student floor seating and pushed the stands back a good three to four feet. The athletic department also added an extra row of fold-up metal seats on the court opposite the benches. The new row of chairs stretches all the way across the west side of the court.

The setup is obviously nice for the older, big-money donor types, but what does it do for the students, the ones who are making the noise and making the "scoreboard bounce," as Kent always likes to say?

What it does is push students farther away from the court. They are now three to four feet farther away than they used to be. And remember when it used to be fun to heckle opposing players as they took the ball out of bounds under the basket?

Well that section is now used

for comfortable theater-style seating.

The atmosphere that used to be so intimidating for opposing teams is now more of a walk in the park.

"I am anxious to go to Mac Court," Washington head coach Bob Bender said. "It doesn't look like the fans are right on top of you anymore."

It sucks to be a fan in Mac Court these days.

Ryan Frank is the sports editor for the Emerald.

Price reported to reap Rose Bowl reward

Mike Price is expected to sign a five-year deal that will pay him \$450,000 a season

The Associated Press

PULLMAN, Wash. — Washington State head football coach Mike Price is expected to sign a long-term contract that will make him one of the highest-paid coaches in the Pacific-10 Conference, a newspaper reported Tuesday.

Price, who took the Cougars to the Rose Bowl and a 10-2 season

record, will sign a contract that pays him about \$450,000 a season in salary and guaranteed outside income. The Spokesman-Review of Spokane reported, quoting "a highly placed source."

WSU athletic director Rick Dickson declined to discuss terms of the offer, but said an agreement is expected soon. Price was out of town on a recruiting trip and was unavailable for comment.

Price currently earns about \$113,000 in base salary and another \$140,000 from outside

sources that include TV and radio contracts, an annuity, football camps and speaking fees.

The new offer, for more than five seasons, would move Price near the top of Pac-10 coaches' salaries. Only Paul Hackett of Southern California, Bruce Snyder of Arizona State and Stanford's Tyrone Willingham make more than \$450,000 a year.

Price, in his ninth year at WSU, led the No. 9 Cougars to the Rose Bowl, where they lost to No. 1 Michigan 21-16 and finished with a 10-2 record.

We cultivate champions.

Rogue Wave Software, a recognized leader in reusable, cross-platform software parts...

...is looking for world class computer scientists to join its highly-respected Technical Support Team at its headquarters in Corvallis, OR.

If you have what it takes to communicate complex ideas, algorithms, and programming solutions to clients, then Rogue Wave wants to meet you and talk about being a Technical Support Engineer.

If you are effective at working in teams to meet the diverse programming and support needs of clients from around the world, then talk with us. Tell us about your BS or MS in Computer Science, your knowledge of C++, Java, and Object-oriented programming. Do you thrive on working with new technology? Do you have strong problem-solving and analysis skills? An understanding of RDBMS, network programming, and GUI programming?

Do you want more? Technical Support Engineers at Rogue Wave get immediate satisfaction from projects because their clients champion their efforts. And the variety of projects, as well as the career path to Consulting and Training in Technical Support, makes being a Technical Support Engineer at Rogue Wave a great career choice.

Consider joining our team of champions.



C++ and Java Technical Support Engineer



Interview with us on campus, visit our booth, or send a resume and cover letter noting the Technical Support Engineer position to either:

• Human Resources
Rogue Wave Software, Inc.
850 SW 35th
Corvallis, OR 97333

• E-mail:
hr@roguewave.com

• Fax: (541) 753-1912

Visit our Web site at
<http://www.roguewave.com>
for additional information
on Rogue Wave and a
complete list of job
opportunities.

Equal Opportunity Employer



Northwest Pacific Region

Take Action on Capital Hill!

Join the U.S. Student Association for the

29th Annual Grassroots Legislative Conference and National Student Lobby Day!

March 7-10, 1998

Gallaudet University
Washington D.C.

- Learn all the hottest information about Congressional action affecting students
- Take part in interactive workshops on crucial issues facing students today
- Learn how to lobby Oregon's Senators and Representatives in D.C.

Armed with the latest information on legislative issues, students will descend on Capital Hill!

More information in the ASUO office, Suite 4 EMU or call 346-3724. Applications due Friday, January 16th & interviews scheduled ASAP

BE A PLAYER

Attend the

Career & Internship Fair

and get into the game. Take a walk on Network Avenue. Visit opportunity Place. Bring your resume and make valuable contacts.

January 21 & 22

11 a.m. - 3 p.m.

EMU Ballroom

You can't be a winner if you don't play.

At the two-day fair, the UO Career Center can help you win your first career job or find the right internship. More than 50 companies and public agencies are sending representatives to the fair to find good candidates for their job and internship openings. They want to talk to

you!



UNIVERSITY OF OREGON

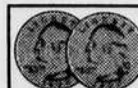
CAREER CENTER

The University of Oregon is an equal-opportunity, affirmative-action institution committed to cultural diversity and compliance with the Americans with Disabilities Act.

Nowhere to run to. Nowhere to hide.

The Oregon Daily Emerald on the world wide web.

<http://darkwing.uoregon.edu/~ode>



ODE CLASSIFIEDS...
YOUR CAMPUS MARKETPLACE

