

Some things  
You just  
have to see  
for yourself.

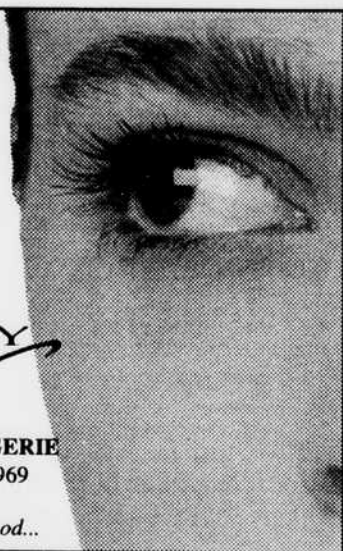
EXCLUSIVELY  
*Adult*

VIDEOS • TOYS • GIFTS • LINGERIE

1166 South A Springfield, 726-6969

Open 24 Hours (Almost)

It doesn't have to be dirty to be good...



## Library: Patrons concerned by cuts

Continued from Page 1

The library has cut the hours in order to keep enough staff to run the circulation desks and other necessary positions. But library hours are not the only thing the library has had to put on the back shelves.

Hildebrand said staff salaries and four full-time staff positions have been cut, as well as money available for the hiring of extra part-time workers.

Though the budget cuts will affect hourly reductions and put a crunch on staff positions, they will affect other aspects of the library as well.

The reduced hours, coupled with an increasing number of patrons, will also test the library's space capacities.

According to Phil Weiler, a spokesman for the city of Eugene, the library currently handles about 2,000 patrons a day, and that means it is one of the busiest libraries per capita in the Western United States. Weiler also added that the library has not been expanded since 1959. Over the years, the library has had to

*"I think they should give more money to the arts, libraries and that sort of thing. I am amazed at how small this library is, and I think [the city] should expand on this one."*

Kelly McMinn  
Eugene Resident

deal with a lessening of available shelving space as it receives more circulation material. Weiler said that this problem has forced the library to move many books with lower circulation numbers off of the shelves and into storage.

"The building is becoming both too small and too busy for the patrons," said Jim Johnson, Director of the Library, Recreation and Cultural Services Department.

Johnson, as well as other staff

at the library, is supportive of the prospect that voters will approve the construction of a new library facility or the allocation of additional funds during the next city election.

"We're hoping citizens will approve some sort of replacement funding for the city," Hildebrand said.

But even if a new library facility were approved, Johnson believes the reality of a finished building would take anywhere from three to four years — even if a new bill passes.

Library patrons are also concerned by the cuts.

"I think they should give more money to the arts, libraries and that sort of thing," said Kelly McMinn, a 19-year-old Eugene resident. "I am amazed at how small this library is, and I think [the city] should expand on this one."

McMinn said she feels the library should be open all week long.

"We own the library, but [the patrons] have to deal the most with the cuts," Hildebrand said.

**New Undergraduates:**  
To activate your account on GLADSTONE (the UO's student computer) and to get your dial-in modem account, you need to pick up your Student Computing Account Information sheet at the Help Desk in the Computing Center's south entryway.

This sheet includes your GLADSTONE and modem account usernames (which can't be changed) and your pre-assigned passwords. You must change your GLADSTONE password.

If you have questions:  
- go to the Computing Center Help Desk  
- check the Computing Center website at <http://cc.uoregon.edu>  
- call

346-1758 - GLADSTONE accounts  
346-4412 - Modem accounts

Faculty, staff, and graduate students can get help in setting up an account at the Help Desk or <http://cc.uoregon.edu>

GET ONLINE



**Student Computing Account Information Sheet Pickup**

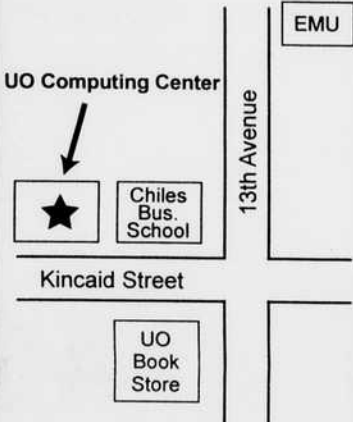
**Dates:** Beginning September 22

**Place:** Computing Center

**Hours during the week of 9/22:**  
Mon-Fri, 8 am - 5 pm

**Regular Hours:**  
Mon-Fri, 9 am - 4:30 pm

You must present a photo ID or driver's license



**Pitch in!**

**Recycle your copy of the ODE.**

# No Bull!

Your photos look brighter and sharper when processed by Kodak

Get the highest quality processing and save money too!

Don't be COWED by better fertilized offers



**\$5<sup>00</sup> OFF**  
initial appointment  
with this ad

**Precision Electrolysis**  
by caring professionals  
days ♦ evenings ♦ weekends

**Pass it on.**  
(please)



Help our successful recycling program on campus by putting the Oregon Daily Emerald back in its original rack when you've finished reading it. This will allow another person to read it and/or be easily picked up for recycling.

gerlach's



**Kodak**  
Royal Premium  
**PROCESSING**  
Dev & Print C41 Color Print Films  
1st four rolls please. Expires 10/10  
Coupon must accompany order

**gerlach's** **CAMPUS CAMERA CENTER**  
We Sell Photography, Not Just Cameras