

Knight Library

Once just known as the "Libe," Oregon's largest research library has undergone many changes in the last decade

THE ARCHITECT



ELLIS F. LAWRENCE

1879-1946

WHAT HE DID:

He was Campus Planner and the architect of 17 existing campus University buildings, as well as dean of the School of Architecture.

ENTRANCE PORTALS:

Sixty years before the X-files hunted for the truth, cast stone inscriptions were placed above the main doors:

Ye shall know the truth...and the truth shall make you free

1950 ADDITION:

The library quickly outgrew its small closed stacks, and in 1950 an addition increased the collection size by 80 percent.

1966 ADDITION:

Designed to complement the 1950 addition, this new construction totally engulfed earlier work. Architects added 100,000 square feet and the more space was used for reading and studying.

The low ceilings resulted because the new construction had to fit the old construction.

1994 ADDITION:

The library collection has grown by 40 percent since the last addition. 140,000 square feet was added to the south in 1994. It cost almost \$30 million and integrated many pieces of artwork.

OREGON COLLECTION:

A grand room that now houses the Special Collections, this room has balconies that face north.

FOUNTAIN:

This fountain was copper lined until 1942, when the metal was used for wartime scrap metal.

BROWSING ROOM:

Now used for special events, this room was once a reading room opposite the circulation desk

PERCENT FOR ART: All new public buildings must spend a percent of their budget on public art. The 1994 addition integrates artwork and complements the original 1937 building.

WHO ARE ALL THOSE PEOPLE?

Cast stone heads represent different pursuits of academic study, including philosophy, art, history, nature and others. Edna Dunberg & Louise Pritchard carved the 15 heads that adorn the top of the library.

St. Thomas Aquinas
John Locke
Aristotle
Jesus
Dante
Buddha
Thucydides
Michelangelo



Beethoven
William Shakespeare (left)
Leonardo da Vinci
Sir Isaac Newton
Charles Darwin
President Thomas Jefferson
Justice Oliver Wendell Holmes

WHO'S KNIGHT?

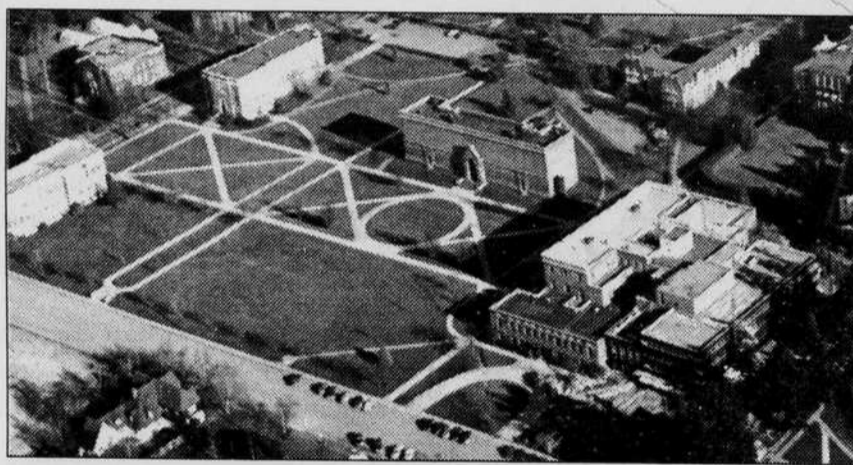


PHILLIP KNIGHT

WHAT HE DID:

He was an Oregon runner and went on to found Nike Inc. with track coach Bill Bowerman.

EDUCATION: Oregon 1959, M.B.A Stanford



WHERE'S PLC?: The library (right) undergoes its first addition in 1950. The Art Museum, Condon and Chapman Halls are the only buildings on the Memorial Quadrangle. Nine story PLC has yet to be built, and the oak trees are only a few years old.

THE LIBRARY'S NUMBERS

This is a list of some impressive numbers from Knight Library (main library not including branch libraries):

5,000 users each day 1.75 million books
50 miles of cables
62 miles of shelving

▲ 1997: 2.2 million volumes

▲ 1987: 1.7 million volumes

▲ 1966: 1.4 million volumes

▲ 1937: 250,140 volumes

▲ 1950: 406,000 volumes

■ The number of books contained in the whole University Library system, starting in 1937, when the current library was built to present day:

A KNIGHT LIBRARY TIME LINE

1920s:

Ellis Lawrence designs an auditorium (below) as the head of the Memorial Quad. This site soon becomes the location of the new main library.

1935:

Federal W.P.A. funds are approved and construction begins, as the library collection is prepared to move out of its current home, Fenton Hall. (right)



1966:

The second major addition is built and totally surround 1950 wing. Its design is radically different than the 1937 building and would prove to make later remodeling a challenge.



1990-94:

Knight Library is renovated. A new south wing (below) is added, while reading and collection space is enlarged. Artwork (left) is incorporated into the architecture, while attention was paid to technology and alternative ways to do research.

1930

1935

1940

1945

1950

1955

1960

1965

1970

1975

1980

1985

1990

1995



▲ 1937: The library is built in much the same style as its neighbor the Museum of Art. (left)



▲ 1950: A major addition is built south of the Lawrence designed main block. (right)



▲ 1980's: The library celebrates its 50th year, is named for the Knight family and is placed on the National Register of Historic Places.

