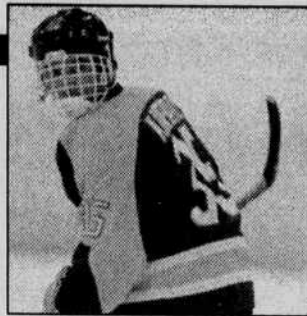


INDEX

| | |
|-------------|----|
| Opinion | 2 |
| News | 4 |
| News Digest | 6 |
| Sports | 9 |
| Classifieds | 10 |
| Crossword | 11 |

TODAY

The University Gospel Ensemble and Gospel Choir will perform at 8 p.m. at Beall Concert Hall.



INSIDE

This year's Club hockey is home to a dynamic goaltending duo

Java and the Muse to showcase women singers and poets tonight

9

7



WEATHER

Cloudy.
High 55. Low 35.

Oregon Daily Emerald

University of Oregon
Eugene, Oregon

An independent newspaper
Volume 98, Issue 57

Sports facilities face debate

■ **ATHLETICS:** Parking shortages that could be caused by the developments worried some area residents and City Council members

By Jennifer Schmitt
Community Editor

The University Athletic Department is looking to expand its facilities by adding an indoor practice facility, outdoor soccer field and new additional practice fields out near Autzen Stadium.

But some residents are afraid the expansion will encroach on the environment and surrounding park area.

The public hearing on Wednesday night for the permit application began at 11:15 p.m. following other public hearings. Due to the late hour, one resident requested the hearing remain open for seven days so other residents could submit written testimony regarding the application.

The Hearings Official ruled the hearing would remain open until Nov. 27. An official decision on the application will be made 15 days following the closing of the hearing.

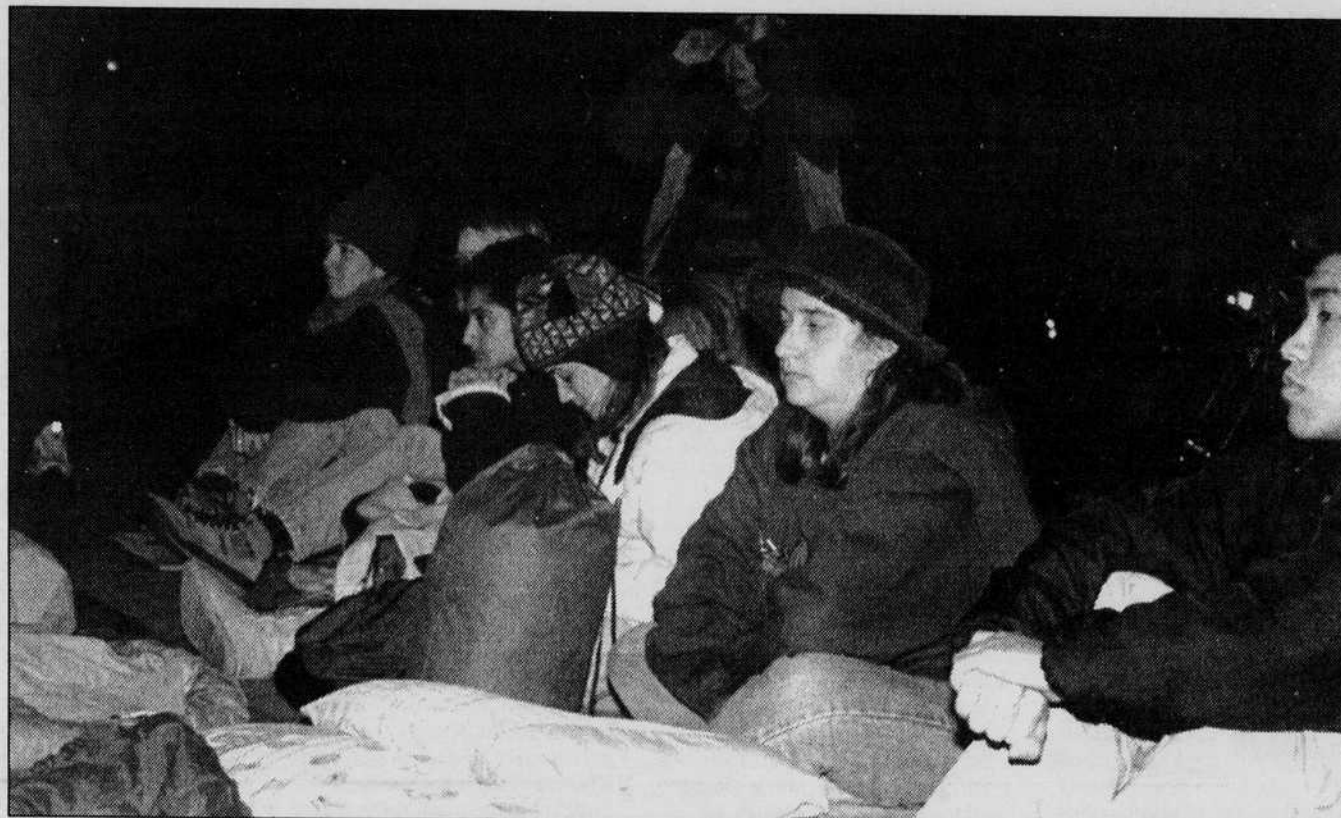
A predicted shortage in parking was just one concern Eugene residents voiced regarding the University's Willamette/Greenway permit application for the construction of new athletic facilities.

"The University came to the City Council and made a very convincing argument for an increased need for parking last year," said Barbara Keller, Eugene resident and city councilor. "This proposal further reduces the parking available to them and is a very important issue."

Keller also was concerned about an agreement between the city and the University that allows the University to use Alton Baker Park for parking on game days in return for the use of the Autzen Stadium parking by Alton Baker Park, Wistec and museum patrons.

"This proposal would deny the city's rec-

Turn to **ATHLETICS**, Page 4



AMANDA ERICKSON/Emerald

Members of OSPIRG listen attentively to speakers at the Grate American Sleep Out held in the EMU Courtyard Wednesday night.

Event raises awareness about homelessness

■ **PROBLEM:** Speakers shared personal experiences in order to bring empathy about the issue to the campus community

By Tom Potter
Student Activities Reporter

The cold of the approaching winter and the recent rainfall can be a little bit of an inconvenience for most of us.

But for the homeless, being cold and facing whatever winter has in store is a daily battle.

The Grate American Sleep Out took place Wednesday night and gave about 15 volunteers a chance to feel what it is like to be homeless, even if just for one night.

"It's a way to help people recognize the growing problem of hunger and homelessness in Lane County, the coun-

try and even the world," said Tracy Miller, an event participant.

Participants slept out in the EMU Courtyard from 8:15 p.m. until 7 a.m. as part of Hunger and Homelessness Week, which is being sponsored by OSPIRG.

"This is to bring empathy and awareness about the problem of homelessness to campus," said Tara Paluck, coordinator of the sleep out.

The event takes place nationwide through local communities that organize their own sleep outs. Here at the University, participants were able to listen to speakers from the Homeless Action Coalition, the Director of the Eugene Mission and the ASUO Outreach Coordinator Glenda Marshall.

Tom Musselwhite of the Homeless Action Coalition spoke to participants about his experiences as a homeless man.

"I know that point for me when I saw the real gravity of the situation facing homeless people and also saw the way that it was increasing," said Musselwhite. "Our purpose now is to provide more options for more people to find more ways for them to do things for themselves."

A homeless woman receiving help from project recovery, a program that helps drug addicts, alcoholics and those that are homeless, said she felt the sleep out helped people realize the problems facing homeless people.

"I think this is a good awakening," said Meredith Manion. "It's not just the homeless problem but social awareness."

Through speeches and their presence in the EMU Courtyard, participants said

Turn to **PROBLEM**, Page 3



MATHEW STIFFLER/Emerald

Alonso Oliveros (left), an undeclared freshman, and Randy Choy, a graduate student, hold signs at the boycott rally.

MEChA urges boycott of Garden Burgers

■ **RALLY:** Several groups are trying to gain student support for the removal of the food product from campus

By Jennifer Schmitt
Community Editor

Holding signs saying, "Fight for human rights" and "Support the farm workers," students urged for a University-wide boycott of Garden Burgers and other Whole-some and Hearty food products.

MEChA members hosted a rally Wednesday afternoon in the EMU Courtyard to show support for farm workers who are fighting for better wages and better working conditions.

"We are sending out a message that the University campus cares," said Emily Lerma, external co-director of MEChA. "Our goal is to get Garden Burgers off of campus."

Garden Burgers are currently served in the residence hall cafeterias, Lerma said.

MEChA members will be handing out flyers and leaflets to students in the residence halls in an effort to raise public awareness of the boycott.

Then members said they will be meeting with the head of University Housing to encourage boycotting Garden Burgers.

Lerma said the University has been supportive of past boycotts and said she hopes the University supports the Garden Burger boycott.

"There is a real history of University support for union projects," she said. "They removed grapes from campus once during a farm worker boycott of them, and another time they removed lettuce and only served lettuce picked by unionized farms."

Turn to **RALLY**, Page 3