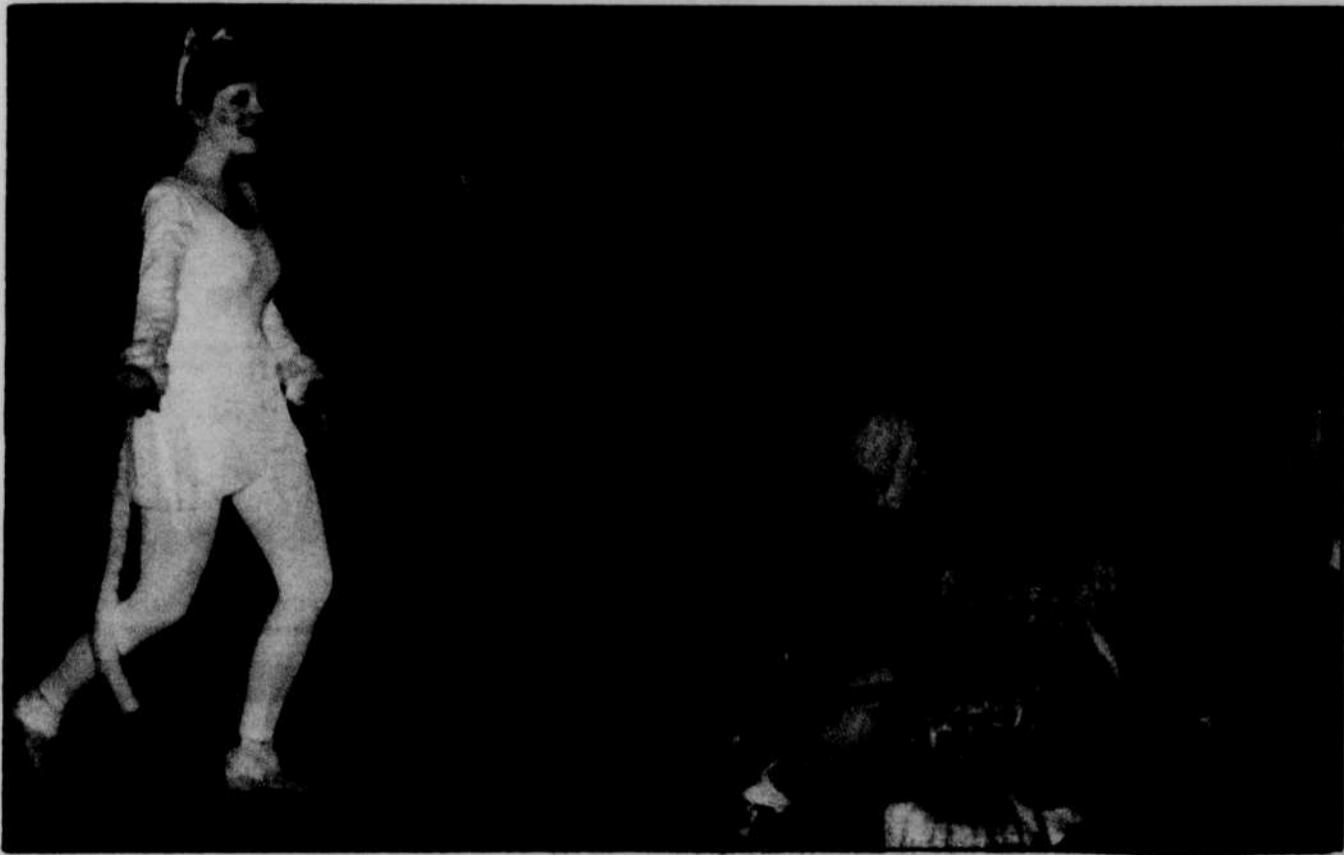


Oregon Daily Emerald

TUESDAY, SEPTEMBER 28, 1993

EUGENE, OREGON

VOLUME 95, ISSUE 20



ANTHONY FORNEY/Emerald

What a rush!

Melissa Pennington (above), a junior in Kappa Alpha Theta, plays the part of "Pretty Kat" in a skit designed to inform rushees about the sorority. The production is tailored after the Broadway show *Cats* and ends with all of the sorority members crowding in the doorway (right) to say goodbye. Sororities throughout campus had similar events during Rush Week last week.



ANTHONY FORNEY/Emerald

Author addresses censorship

□ Project director talks about thought control

By Lia Saliccia
Oregon Daily Emerald

Amid the backdrop of banned books ranging from *Where's Waldo* to *A Clockwork Orange*, the founding director of the ACLU Arts Censorship Project in New York spoke about the state of the country's censorship wars to a group of about 20 people in Eugene on Sunday.

Marjorie Heins, former chief of the civil rights division of the Department of the Attorney General in Massachusetts, read from her new book, *Sex, Sin and Blasphemy*.

"Very few people will admit that they're for censorship," said Heins, who marks the beginning of the censorship wars in the early 1980s with the rise of the radical right.

Most people instead say that taxpayers shouldn't have to pay for material they find immoral, or, in the case of record labels, isn't censoring but merely warning others about the offensive material, she said.

The more subtle forms of censorship that are discussed in Heins' book include groups exerting pressure upon what type of art is funded and allowed in municipal theaters, local art shows, or "what you're seeing here in Oregon," meaning suppression of homosexual literature in the public libraries by the Oregon Citizens Alliance.

Sex is the most often censored topic in art and entertainment in the United States, perhaps because of "our puritanical history," Heins said.

Reading from a chapter in her book on obscenity, Heins said that while "some citizens think war is obscene, others may think the Iran-Contra affair ... obscene." The legal definition of obscenity consists of a three-part test that came out of the

Turn to CENSORSHIP, Page 4

New south bus station expands capacity

□ LTD plans to better accommodate its riders with new stop near 14th Avenue

By Rebecca Merritt
Oregon Daily Emerald

A new Lane Transit District bus station opened Monday to accommodate the more than 1,500 University students and faculty that ride LTD buses each day.

Located on Kincaid Street between 13th and 14th avenues, the station was constructed this summer through a joint partnership between the University, LTD, the city of Eugene and the Oregon Department of Transportation.

The \$225,000 station replaces University faculty and staff parking and is funded mostly through a federal transportation grant, said Stefano Viggiano, LTD planning administrator. LTD is paying for the remaining costs, he said.

University ridership has tripled since the north Kincaid station was built in 1987, Viggiano said. LTD has been looking to expand the University bus service since 1991.

"We realized that we needed more capacity," Viggiano said. "Our initial inclination

was to build onto the north station."

However, congestion near the north station prompted University and LTD officials to consider the new, south station. Viggiano said the University was concerned about additional traffic near the University Computing Center.

"The south is more attractive because we have some buses that head south," he added. "People going south will have a faster ride."

Three buses will depart from the new station including No. 23 Fox Hollow, No. 28 Hilliard and No. 71, a new route serving Amazon Family Housing, 24th Avenue and east campus. A total of 16 routes will operate from the University stations.

The city of Eugene widened the sidewalk near the south station and painted new crosswalks on Kincaid Street. The University will pay for a covered bike rack at the station, Viggiano said. A covered customer waiting and information area, landscaping and additional lighting are also included in the project.

University students, faculty and staff can ride LTD buses for free with a current identification card. The University and LTD entered a partnership to offer student-funded, unlimited student bus service in 1988.



NORMAN MESMAN/for the Emerald

Hilary Heinz, a theater major, and Larissa Guran, a Spanish major, catch a bus southbound at the new LTD station on Kincaid Street and 14th Avenue.