

# SURVEY

Continued from Page 1

Members of the focus groups, many of whom were international students, discussed their concerns and various issues that face international students. These topics were the sources of many of the survey questions that Gwartney-Gibbs and her class designed.

Although the racial comment sped the survey process up, Bowman said the survey was already in the planning stages. She said another similar survey will be done next year with undergraduate international and domestic students.

There were only two main differences found between the answers of the international and domestic graduate students, Gwartney-Gibbs said.

One of the differences was that 90 percent of domestic students felt comfortable participating in class, but only 71 percent of international students did.

The discrepancy could be because of cultural or language differences, Gwartney-Gibbs said. She said she had expected to see this difference from the start of the survey.

Something Gwartney-Gibbs said she didn't expect to find was that only 31 percent of international students had asked faculty for advice with career development, while 55 percent of domestic students had.

Some of the results, which are a mixture of both the international and domestic students

with little discrepancies between the two, include the following:

- 74 percent said they were happy with their overall University experience.
- 77 percent said they were satisfied with the services provided by the graduate school.
- 78 percent said they were satisfied with their major department.
- 90 percent of international students said they were satisfied with the Office of Education and Exchange.
- 82 percent said they were satisfied with University Housing.

From the results, Bowman said her office will have more ideas for what to present during orientation and how to make international students feel more comfortable here.

In addition, a new International Student Advisory Committee has recently been formed to advise the Office of International Education and Exchange on various issues facing foreign students.

The seven-member body, made up of international students, will review the survey results and contribute ideas to improve students' experiences in the United States.

"I'd like to see more done at orientation in terms of letting international students know that the International Student Association is here for them," said ISA Director and committee member Naghme Moshtael. "I've had good experiences here, and whatever ISA can do to give the same to others, we will."

Another committee member, Christos Christou, said he will suggest ways to improve rela-

tions between American and international students, and also to solve frequent problems international students have with transferring credits from their home schools.

A more immediate result of the survey will be a new lounge just for graduate students. One of the questions asked what could be improved upon physically within the graduate school, and many students suggested a place where graduate students could meet to study or converse.

As a result of this idea, the graduate school is going to expand into the basement of Chapman Hall, thus freeing up the Leona Tyler Lounge for graduate students to meet in. The expansion should be completed by the end of the summer.

Besides accumulating results, Gwartney-Gibbs' students benefited from doing the "real thing." Designing and preparing the survey — not counting and interviewing — took 15 weeks.

"Most students just read about how to prepare surveys," she said. "In my class, I make them do it."

Gwartney-Gibbs and her students used the recently installed Computer Aided Telephone Interviewing system provided by the Oregon Survey Research Lab.

The students are currently using various scholarly and national literature as comparison resources. Using the survey results, each student has a specific project they are working on that will result in a final paper, Gwartney-Gibbs said.

## LOUIE'S VILLAGE

*The Finest Chinese and American Food*

Open for lunches and dinners until 10:30 p.m.  
Mon. - Thurs. and until midnight Fri. and Sat.

Restaurant & Lounge  
947 Franklin Blvd.  
**343-4480**

## HOUSE RECORDS



**BUY • SELL • TRADE  
NEW & USED  
SPECIAL ORDERS  
CD'S • LP'S • TAPES  
HARD TO FIND  
258 E. 13th  
EUGENE, OR 97401  
342-7975  
FAX 344-7242**

### ET ALS

MEETINGS

**ASUO Student Health Center Insurance Committee** will meet today at 2 p.m. in the Student Health Center Medical Library. For more information, call 346-3702.

**Incidental Fee Committee** will meet today to discuss internal business at 12:30 p.m. in EMU Cedar Room F. For more information, call 346-3749.

RELIGION

**Catholic Newman Center** will have masses Saturday at 5 p.m. and Sunday at 9 and 11 a.m. and at 7:30 and 10 p.m. at 18th Avenue and Emerald Street. For more information, call 346-7021.

MISCELLANEOUS

**Wesley Foundation Work Party** will paint and garden at the center Saturday from 7:30 a.m. to 2 p.m. at 1236 Kincaid St. For more information, call 346-4694.

**Germanic Club** invites students to hike near Three Mile Lake at the coast followed by a snack stop in Mapleton Saturday. Sign-up sheets are on the bulletin board across from Room 202 Friendly. For more information, call 346-4059.

**Museum of Natural History** will close May 23, 1993. For more information, call 346-3024.

**Stan Johnson** will speak about "The Bigfoot and his UFO Connection" Sunday from 1 to 3 p.m. upstairs at the Eugene Public Library. For more information, call 485-4160.

**Helen Zia** will speak about "Racism in America" Saturday from 5 to 8 p.m. in Room 100 Willamette. For more information, call 346-8863.

**Symposium** titled "Justice: Race, Class and Gender" will continue with various speakers today in the Gerlinger Faculty Lounge. The last public talk will be Saturday at 9:30 a.m., followed by a panel discussion at 11 a.m. in the faculty lounge. For more information, call 346-3934.

**International Studies Program** will have a brown bag lunch today at 12:30 in Room 810 PLC.

Deadline for submitting Et Als to the Emerald front desk, Suite 300 EMU, is noon the day before publication. The news editor does not have a time machine. Et Als run the day of the event unless the event takes place before noon.

### IFC

Continued from Page 1

returns to next year's IFC.

Just before O'Leary delivered the injunction, committee member Efreem Mehretab moved that the IFC suspend an internal rule that requires six members to be present to remove a member from office and a rule requiring five members vote for dismissal.

"I feel uncomfortable that Steve is not here to defend himself," Mehretab said.

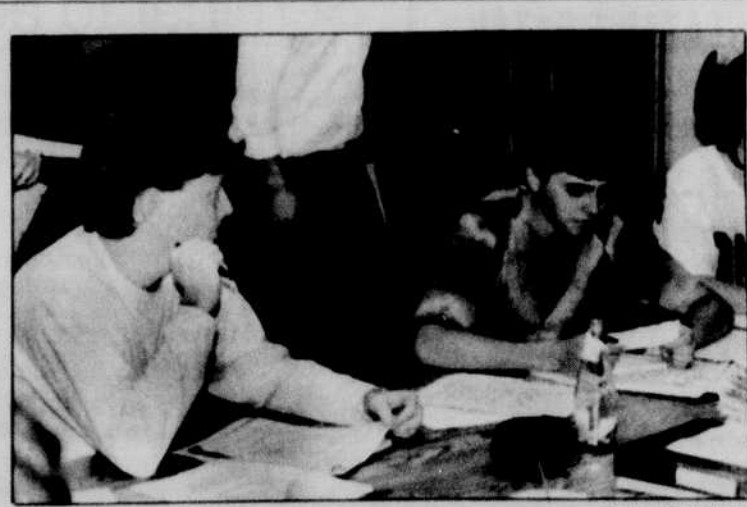
O'Leary's action put another twist in a unsettled week in the IFC.

Committee members Ed Carson, Anne Wagoner and Mehretab sent a memo to Masat Wednesday asking him to resign or face possible expulsion from the committee during Thursday's meeting.

In response to the three committee member's memo, Jason Moore, associate editor of the *Student Insurgent*, requested the court to review the legality of the member's proposed actions.

At the beginning of Tuesday's meeting, Moore accused the committee of conducting an illegal meeting because Masat did not authorize a meeting.

When Mehretab told Moore



**ASUO Constitution Court Justice Michael O'Leary (left) issues an injunction prohibiting IFC members, including Ed Carson (right), from suspending internal rules in order to remove committee Chairman Steve Masat from office.**

he was out of order, Moore loudly stated that the meeting itself was undemocratic and out of order.

"I don't recognize you for this illegal meeting," Moore said. "I don't think this is a meeting ... it's a rump faction of the IFC out for a lynching."

However, IFC Vice-Chairwoman Lydia Lerma said she had the authority under committee rules to call a meeting and said the committee was

keeping its regular Thursday meeting.

"I called the meeting last Monday," Lerma said. "And we're going ahead right now."

Committee member Bobby Lee said he would attempt to get the Constitution Court to decide on the proposed rule changes before the committee leaves office Monday.

"There are concerns about Steve's leadership," Lee said.

### HABITS

Continued from Page 1

That first round also found that students at small schools are drinking more than those at larger schools, and men are more likely than women to

go on heavy binges.

And it showed alcohol is the drug of choice: 85 percent of respondents said they used it in the last year, compared with 26 percent who used marijuana and 5 percent each for cocaine, hallucinogens and amphetamines.

## canoe rentals

\$4

an hour  
weather permitting



- Tuesday-Thursday, 3 p.m. - dusk
- Friday, 2 p.m. - dusk
- Sat. & Sun., 10:30 a.m. - dusk

on the mill race

1395 Franklin Blvd.  
**346-4386**

## EUGENE SELF-STOR

SPECIAL STUDENT RATES

Pay for 3 months and get 1 month FREE!

Call 344-2710

1070 Bertelsen  
(at corner of W. 11th)

EXCLUSIVELY

## Adult

It doesn't have to be dirty to be good

VIDEOS • TOYS • GIFTS



726-6969      1166 S. A St.,  
OPEN 24 HOURS      Springfield

Closed Sun. 4am to 10am  
Mon. 12m to 8am

Still locally owned and operated for over 100 years.



## ILLUSIONS

1311 Lincoln  
Willamette Towers Building

# 40% OFF

- Haircut (reg. \$15 w/ shampoo & conditioner)
- Perms - loop rods & spirals (reg. \$50-65 w/ conditioners, cut & style. Longer, color treated hair slightly more)

Offer good with Barb

Illusions • 345-1810

Staff: Gloria Baker, Sheila Baker, Barbara Bowman, & Maria East

Good through June 21, 1993