

GOOD & BAD STUDENTS

COME USE US

(even when you're healthy)

WE'RE HERE TO SERVE YOU

YOUR Student Health Center
ext. 4441

Work and Play

The EMU CHILD CARE AND DEVELOPMENT CENTERS have positions available for teacher's aides. Teacher's aides need no previous experience; must have a good sense of humor, lots of enthusiasm and a strong sense of commitment. Call the CCDC office at 346-4384 to schedule your work/play time at one of our seven high quality, developmental early childhood programs also serving young children with special needs and English as a second language in our mainstream classrooms.



"Kuraya's has caught on. Twice in a row it has earned mention in NORTHWEST BEST PLACES."

Bob Welch
The Register-Guard

KURAYA'S
That Cuisine

1410 Michigan Blvd., Springfield • Mon-Sat 11-2:30, Mon-Thurs 5-9, Fri & Sat 5-10, Sun 4:30-9 • 746-2951

"Newspapers From Around
The Nation And Around
The World."

**GOOD MORNING
NEWSSTAND**

"Drive Thru Convenience"
smallest fixed retail store in Oregon

ALSO: • copies • ice cold pop • magazines • paperbacks • candy
• gum • flower arrangements • juice • mylar balloons • post cards •
maps & more!

our regular price
Name Brand Cigarettes
1.70 per pack

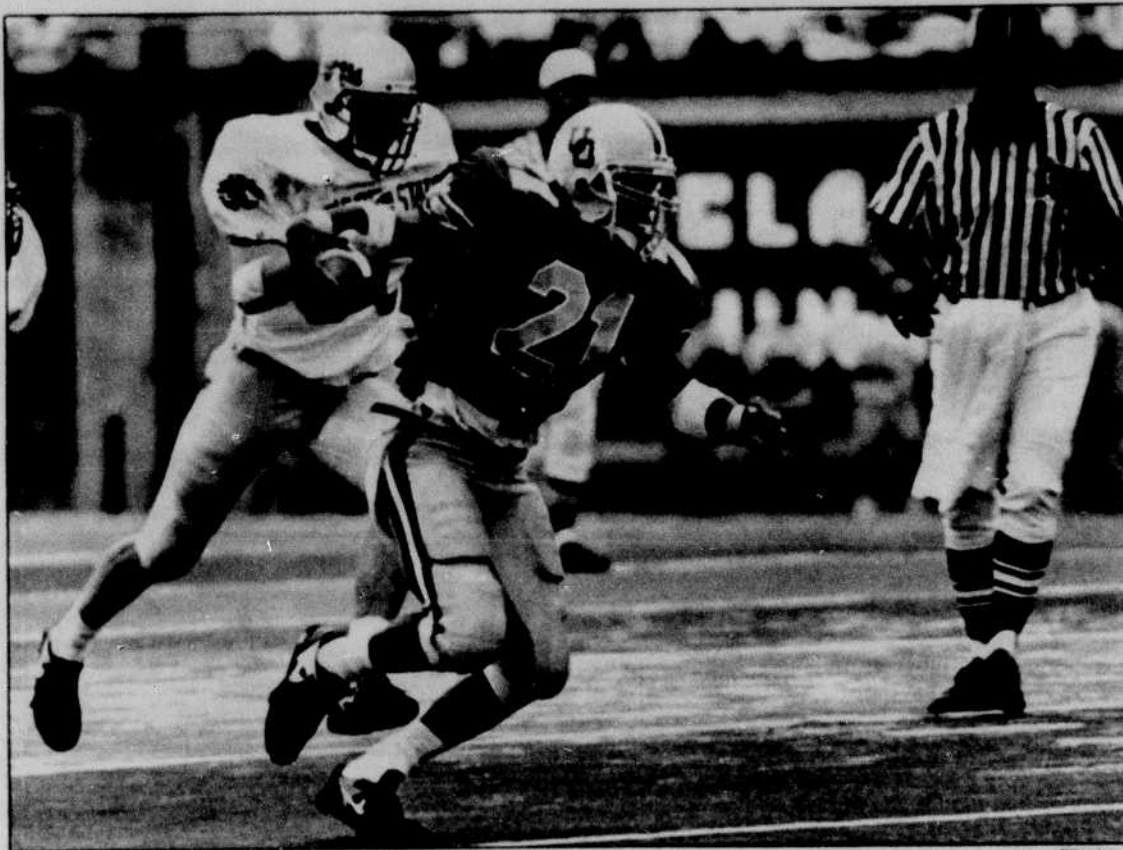
Get the smoking pleasure
without the tar or nicotine. It's the
healthiest choice.

Wall Street Journal
50¢ a copy

single wrapped
Fresh Refrigerated Roses
1.75 each

Film and
Developing
Refrigerated Chew

GOOD MORNING NEWSSTAND
•2372 W. 11th •Next to Gold's Gym •344-6266



Junior Sean Burwell will need to avoid tacklers and injuries for the Oregon running game to be effective. File photo

DUCKS

Continued from Page 6B

Moore said. "I'm a strong runner and I run well inside. I need to elevate my play and be sure I don't make mistakes."

Burwell has shown he can be one of the best backs in the conference if he is healthy, but that is a big "if." He rushed for almost 1,000 yards during his freshman year and had 300 yards after last season's opening two games, but he gained only 210 yards the rest of the season. His ankle injury continued to bother him through the spring but he says that is behind him now.

"I'm fine," Burwell said. "I spent the summer working out a lot and I think I am stronger now than ever."

Whittle is the relative unknown in this group, but he impressed the coaches during the spring enough to be considered for the starting job. Head coach Rich Brooks doesn't care who gets the starting spot as long as someone goes out and wins it.

"All I'm interested in is who gets the job done,"

Brooks said. "One guy may do something better than another guy, but I want one guy to get the ball, run over people and get to the end zone."

Junior Juan Shedrick returns at fullback, backed up by Dwayne Jones and Dan Meade.

Improvement should be seen at wide receiver where last season's starters return and three impressive newcomers have joined the squad. Seniors Anthony Jones and Ronnie Harris are both coming off sub-par seasons when they combined for less than 60 catches and 1,000 yards. They retain their starting jobs but must perform better if they wish to keep them.

Redshirt junior Derrick Deadwiler and redshirt freshmen Kory Murphy and Cristin McLemore are all vying for the backup receiver spots. Brooks says he feels much better about his receiving corps this year than he did a season ago.

"We didn't have as many options at receiver last year as we do now," Brooks said. "Last year I had to play Harris and Jones even when they

Turn to **DUCKS**, Page 13B

NOW PLAYING



Erb Memorial Union

"This Week in the EMU"

Each Monday during the academic year the EMU will share news and information on its programs and services.

"JOBS"

Consider working for the busiest place
on campus. It's fun! And it Pays!
Call Frank Geltner for more information: 346-0007