

Tiananmen Square Remembrance

JUNE 4, 1989 – JUNE 4, 1992



▲ Demonstrators marching with banners proclaiming their solidarity.



▲ Government troops form a barrier outside the Great Hall of the People to prevent protesters from entering.



▲ Detachments of the PLA arrive on the square.

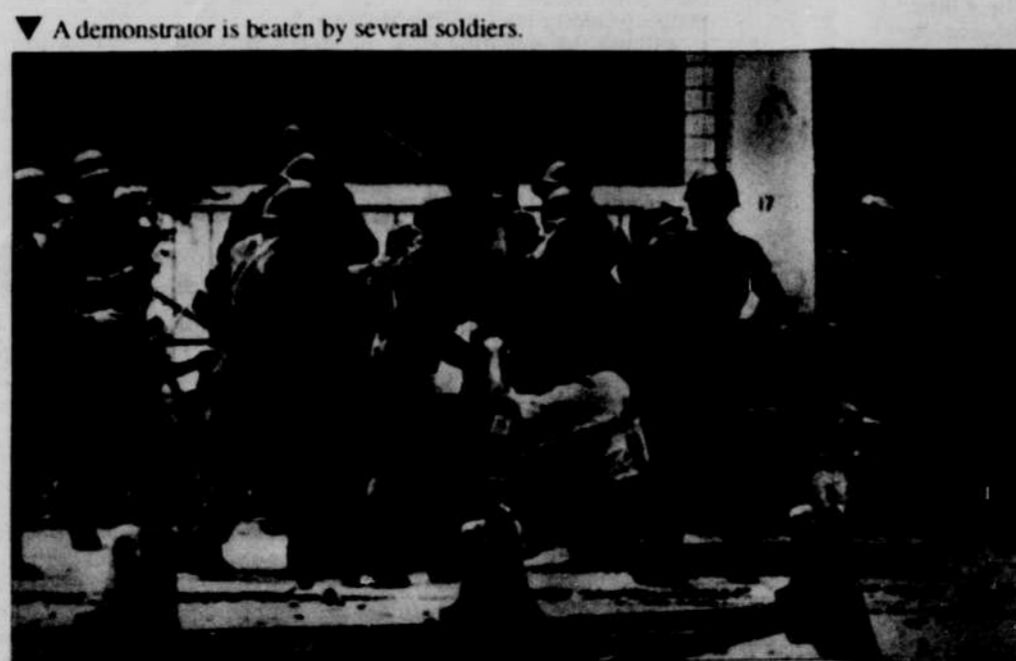


We shall never forget! Our sorrow and outrage shall not diminish over time.

◀▼ A worker pauses in the middle of Changan Avenue as tanks roll out of the square and a confrontation develops.



▶ A woman mourns the tragedy and death of a loved one.



▼ A demonstrator is beaten by several soldiers.



BEIJING, CHINA



▲ Hours after martial law is declared, a human wall of resistance meets a troop convoy attempting to enter central Beijing.



▲ A hunger striker faces soldiers in front of Zhongnanhai.



▲ Goddess of Democracy in the twilight symbolizing the dawn of a new era.

PAID FOR BY CHINESE STUDENT AND SCHOLARS ASSOCIATION, UNIVERSITY OF OREGON
Donations for victims requested. Make checks payable to CSSU, P.O. Box 3914, Eugene, OR 97403