

Oregon Daily Emerald

WEDNESDAY, APRIL 8, 1992

EUGENE, OREGON

VOLUME 93, ISSUE 129

Gays angry with movie portrayals

□ From 'Basic Instinct' to 'JFK,' Hollywood clings to stereotypes of homosexuals, angering the gay community

By Tammy Batey
Emerald Reporter

The new movie *Basic Instinct* has touched a raw nerve within the gay community because of its portrayal of lesbians and bisexual women.

Gay, lesbian and bisexual groups across the nation have denounced the movie and also expressed anger at the portrayal of gay men in *JFK* and *The Silence of the Lambs*.

Gay men, lesbians and bisexuals are consistently portrayed negatively and stereotypically in movies — if they're portrayed at all, say local members of the gay community on and off campus.

Movies offer few gay characters, but when they do, the characters are often heavily stereotyped, said Sue Dockstader, Lesbian, Gay, & Bisexual Alliance co-director.

"A lot of times movies serve to reinforce stereotypes," Dockstader said. "When you've used stereotypes you exclude the possibilities. It's a veiled sort of thought control."

The Silence of the Lambs may have swept the Oscars but its portrayal of a gay man is far from worthy of an award, she said.

"The movie shows a gay man who wants to be a woman," she said. "It's a common belief that all gay men are obsessed with being women. Most gay men I know do not want to be women. In the movies gay men

Turn to **MOVIES**, Page 4

April showers bring ... what?

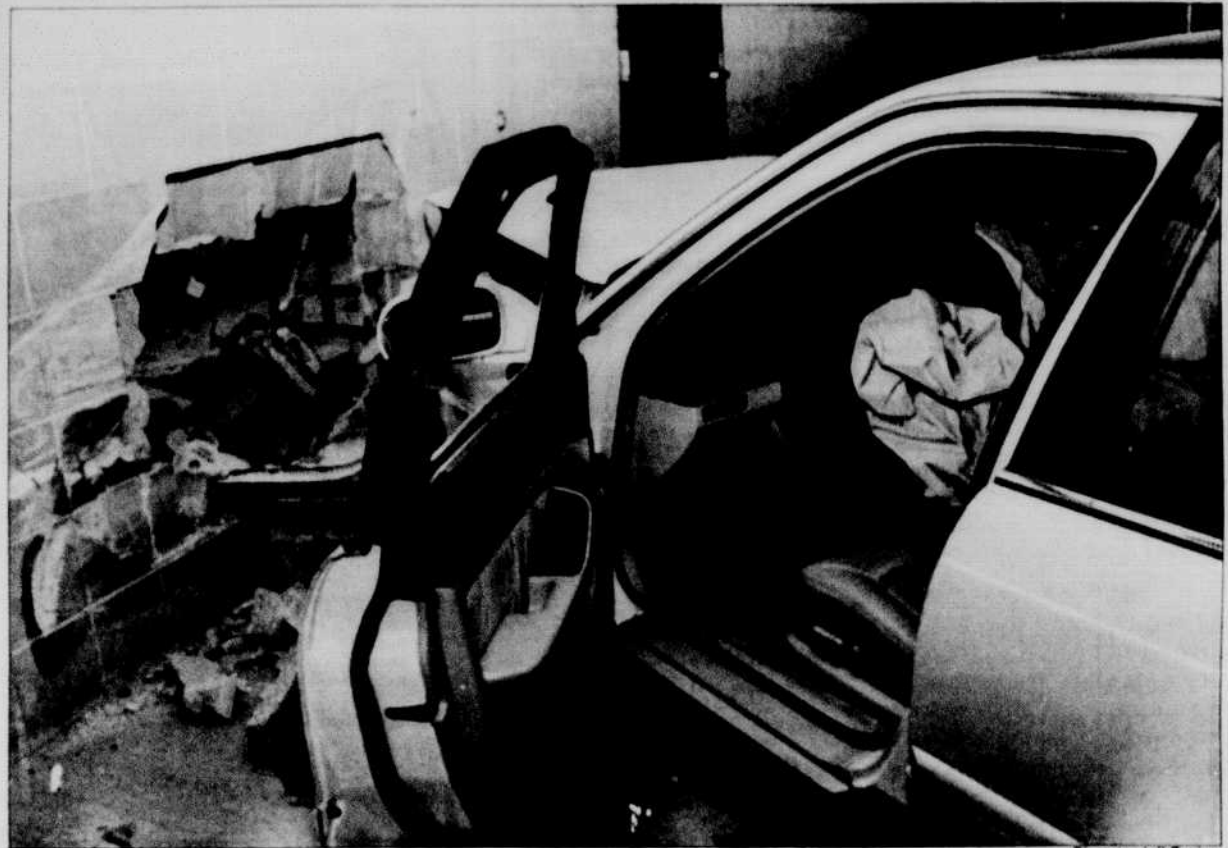


Photo by Jeff Paslay

Dandelions Flowers and Gifts, 607 E. 13th Ave., lost its back wall Tuesday morning when a 1991 Acura Legend driven by Alice Lunde crashed into it. Following the accident both Lunde and her passenger, John Peer, were taken to Sacred Heart Hospital without injuries — airbags on both sides of the car opened on impact.

57 candidates on election ballot

□ Students will cast their votes for ASUO president, Incidental Fee Committee members and other positions April 29 and 30



on campus

A total of 57 people, including four ASUO presidential candidates and 19 Incidental Fee Committee candidates, will be on the ballots when students at the University vote in elections later this month.

Student Senate seats, Associated Students President's Advisory Council seats and positions on the EMU Board of Directors will also be voted on during the primaries, April 22 and 23, and the general elections, April 29 and 30.

The *Emerald* will run profiles of the presidential and vice presidential candidates and IFC candidates beginning next week. In addition, a Voter's Guide including statements from all candidates will be published as a supplement in the *Emerald* on April 21.

• **President/Vice President** — Bobby Lee and Karmen Fore, Chris Pharis and Donald Morgan, Don King and Holly Ferguson, Dan Pulju, TBA.

• **IFC 1-year seats** (four will be elected) —

Jerod Hume, Mark Brinkmann, Anne Wagoner, Mark Bellamy, Ed Carson, Barbara Rodgers, Russell Taylor, Efram Mehretab, James McNicholas, Jose Caldera, Teresa Naillon, Chris Bauman, William Gaskill and Chris Wall.

• **IFC 2-year seats** (two will be elected) — Steve Suarez, Steve Masat, Steve Hargin, Christi Garr and Zoe Pargot.

• **ASPAC** (two will be elected) — Ryan Dockert and Maxwell Wallingford.

• **EMU Board** (two will be elected) — Alberto Pena, Wendy Vejlupek, Sue Dockstader, Jason Corso and Sara Dodge.

• **Student Senate** (one will be elected for each seat) —

Seat 2, Brian Hoop.

Seat 3, Brian Highland.

Seat 4, Walter Marvin and Troy Shields.

Seat 5, Maurice Marvin and Lisa Albrich.

Seat 6, Sheliza Mitha and Chris Cellars.

Seat 7, Owen Brennan and Dick Lee.

Seat 8, Darren Luvaas, Michael Jones, Jr. and Diana Collins.

Seat 9, Amy Brandon and Patricia Davico.

Seat 10, Matt Hasek and John Clarke.

Seat 12, Grant Calof.

Seat 13, Brian Thompson.

Seat 14, Jason Sprague.

Seat 15, Branden Kelly and Matt Cordova.

Seat 16, Hank Oberson.

Seat 17, Jo Trigilio.

Forum: Tax reform is Measure 5 remedy

□ In Oregon's changing economy, more people will need a college education

By Carrie Dennett
Emerald Associate Editor

The effects of Ballot Measure 5 and the future of the University and the state were subjects of Tuesday's President's Forum.

Panelists stressed the future of Oregon depends on educated citizens, and that many people will be closed off from an education unless the state legislature and the state's voters can approve a tax reform package.

"It makes no sense from any public policy standpoint to be cutting higher education and closing campuses," said Gerald Kissler, senior vice provost for planning and resources.

Kissler said higher education in Oregon has been traditionally underfunded because Ore-

gon had an economy based on farming, fishing and forestry — jobs that don't require higher education.

However, in Oregon's changing economy, less than 5 percent of all Oregon workers are in forestry jobs, he said. For every forestry job lost, 10 managerial jobs are created.

"More people will need a college education," he said. "Oregon should be investing in its future."

People may not have been looking toward the future when they passed Measure 5; they may instead have been looking at a past and present that was not what they hoped for.

Measure 5 came about in many ways because of the failure of the American dream, said Carl Hosticka, a state representative from Eugene and University associate vice president for statewide education services.

Turn to **EDUCATION**, Page 4



FIREHOSE

The California-based alternative band Firehose will douse local fans Thursday.

See **WOW**, Page 8

FOR THE ART OF IT

The University's art history department will receive a \$1.2 million endowment from the estate of a late professor considered 'Oregon's dean of architectural history.'

See **ART**, Page 5



FRESH START

The Duck men are looking forward to next season under their new head coach.

See **YOUNG**, Page 11