

CONVERSE
ALL STARS Black Hi-Tops
\$24⁹⁹

When you're serious about the games you play

DELEGATO'S
Athletics

Mohawk Marketplace • Springfield • 741-3381

IN TOUCH with Recreation and Intramurals

RIM resurrects kinder, gentler water polo winter term

Players use inner tubes in water polo's less competitive cousin

Water polo sounds like a very intense sport, meant only for those with the endurance to play it and the courage to tread water for long periods of time.

But don't write off of water polo completely, because now the average swimmer can enjoy the sport in an inner tube. Recreation and Intramurals is offering the sport winter term.

The game features six players on a side, all of whom are in an inner tube. The rules are similar to water polo, but any physical contact results in a foul. The players maneuver themselves with their hands and by kicking their feet.

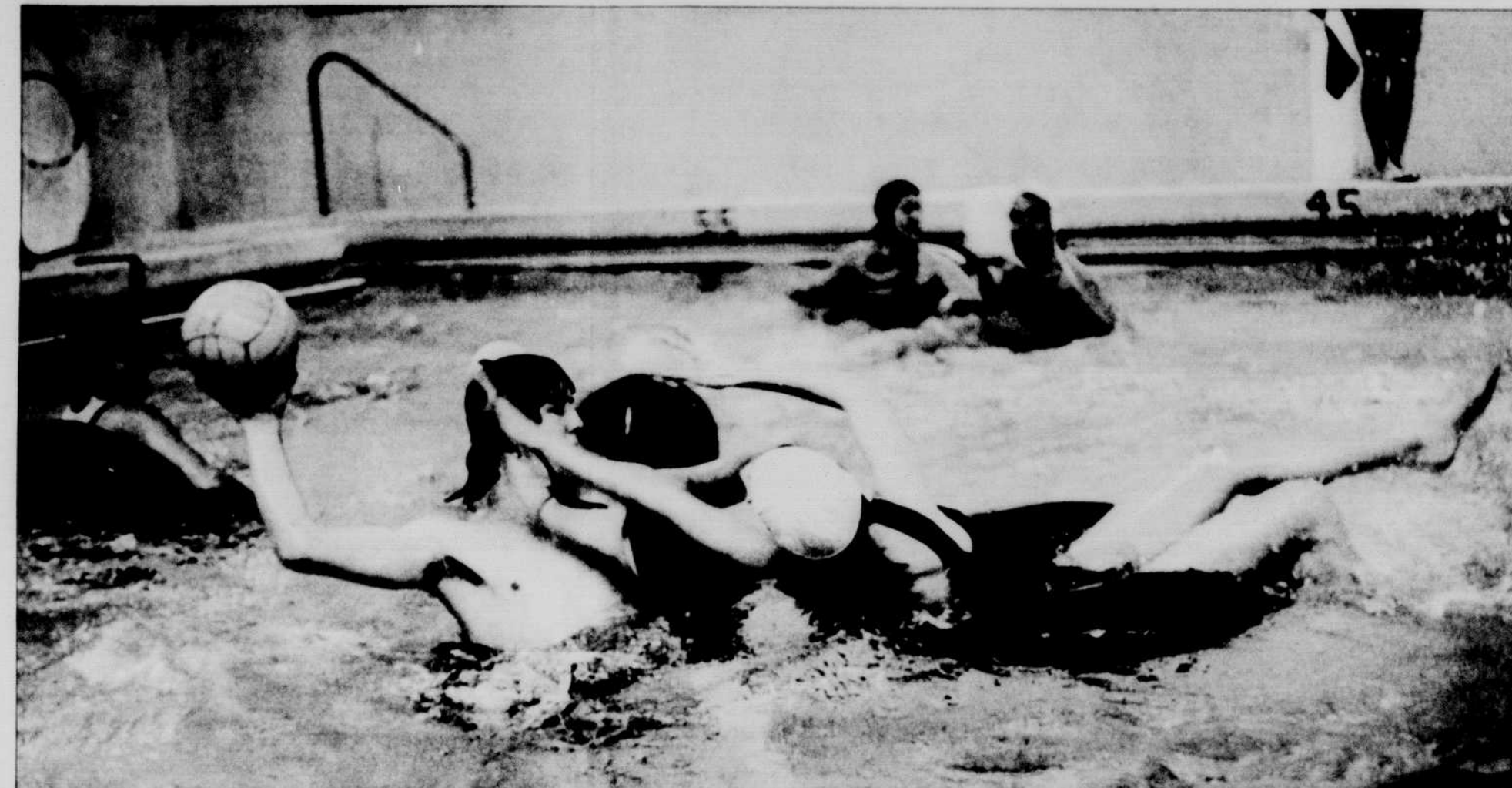
Water polo is much more competitive than inner tube water polo, but the players still "can burn a lot of calories," said George Costa, a GTF with RIM.

The inner tube water polo league will be organized into teams, which will play each other every Tuesday night at 6:30 p.m. RIM is expecting to have eight to 10 teams, which could consist of any campus groups or a group of friends.

A team must be coed with at least two women players.

For students who want to play but cannot get a team together, lists of players looking for teams and vice versa, have been posted at the RIM office, Room 103 Gerlinger. The cost per team is \$30, which guarantees at least four games.

"We emphasize noncompetitive sports," Costa said about the polo program. "It is more of a fun recreational



RIM canceled inner tube water polo in 1982 due to lagging student interest. But the sport's increasing popularity has brought about its reappearance this term. Sign-up space is available.

sport." The first four games will be more for fun, but the playoffs are a time for the teams to show their expertise and win the league.

Potential polo players who think the sport sounds like fun but have questions are invited to an "open float day" Jan. 21 at Leighton Pool to try it out. RIM officials will go over the rules, and said

We emphasize noncompetitive sports. It is more of a fun recreational sport.

George Costa, Recreation and Intramural GTF

the occasion would be a good opportunity to find a team.

RIM dropped the inner tube water

polo league in 1982 due to lagging interest. However, after all of the the RIM directors and GTFs attended a conven-

tion in Seattle, they learned of the growing interest in other campuses to start the leagues back up again.

This is a "trend that's coming back," Costa said. "I took it upon myself to try it out because I like water polo."

If there is interest winter term, RIM is planning on expanding the league to have women's and men's leagues, too.

—Mia Bertelsen

OREGON'S MOUNTAIN BIKE HEADQUARTERS

THE 1992s ARE HERE All 1991 Models are greatly reduced

CYCLE-BI
REPAIRS & CYCLES

1340 Willamette 687-0288

Welcome to **Eugene Athletic**

the store with the finest sportswear and equipment for all seasons

OPEN 7 DAYS A WEEK

ALL MAJOR CREDIT CARDS ACCEPTED

343-1288

The Best Workout — The Best Location

1/2 OFF INITIATION FEE until Jan. 20, 1992

• STAIRMASTERS • AEROBICYCLES
• AEROBICS - FUNK, BENCH, HIGH/LOW

OREGON WEST FITNESS

6 am - 11 pm 485-1624

STUDENT SPECIAL

3 Month Membership plus 10 tanning sessions for **\$99**

Special includes: Full use of facilities STAIRMASTER • WEIGHTS • BIKES • WHIRLPOOL & 10 (20 min.) tanning sessions

PACIFIC NAUTILUS & AEROBICS
189 W. 8th, Eugene • 485-4475

The Oregon Daily Emerald Presents:

IN TOUCH

Our Editorial and Advertising staffs combine to bring our readers these special issues that profile particular organizations and departments on campus.

If your group or organization is interested in an IN TOUCH Supplement, contact Tom Leech in our advertising department.

346-3712

Oregon Daily Emerald

Vasque

CLASHION

SUPER LITE. SUPER FIT WITH V.E.S.

MCKENZIE
OUTFITTERS
79 W. BROADWAY

CALL OUR ADVERTISING DEPARTMENT 346-3712

Oregon Daily Emerald

What Jogged-Out Jocks Say About Onsen

ONSEN
HOURLY HOT TUB RENTAL

Call 345-9048 for reservations.
1663 Garden Ave., Eugene

3 MONTHS FREE!

*WHEN YOU MENTION THIS AD. HURRY! LIMITED TIME OFFER!

For a limited time, use all the facilities at Lane county's largest and most fully equipped Total Fitness Centers for three full months with an annual membership!

- No Sign-Up fees!
- Three locations!
- Open 24 hours! (Better Bodies only)

"More service, more facilities...less price!"

BETTER BODIES Total Fitness Centers
3270 Gateway Loop • SPRINGFIELD • 726-5220
3875 Main • SPRINGFIELD • 746-3533

GOLD'S GYM
2370 West 11th Avenue Eugene 686-GOLD (4653)