

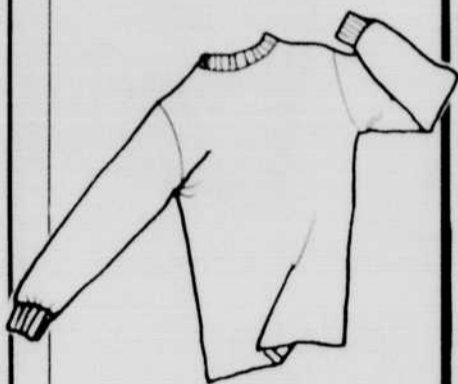


Photo by Sean Poston

Dale Berg, owner of Berg's Ski Shop in Eugene, readies a customer's skis for the coming season by scraping off old wax.

Long Sleeve
T-Shirts

100% cotton Hanes Beely-T and
Oneita Power-T



regular \$11.00

NOW **\$9.25**

Sportswear
SALE

Today Thru Saturday
Nov. 12 - Nov. 16

Caps

with leather strap
regular \$7.00

NOW **\$5.95**

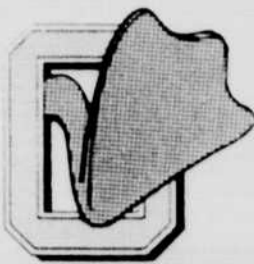


Tultex
Sweatshirts



regular \$17.00

NOW **\$15.00**



The
WEBFOOT

239 E. 14th
344-1034



SKI WEAR

Continued from Page 7B

unification in your ski-style statement.

"Rear Gear" is a colorful fanny pack made of a waterproof, body-molding material that comes with an insulated container to hold hot or cold beverages.

The "Arctic Wall" is a colorful, fleecy neckwarmer worn in lieu of scarves or turtlenecks.

So, with all the high-powered hues available, go on and try a color on the slopes that you otherwise might not be caught dead in on the street!

-Mike Freeman



Pass it on.
(please)

Help us begin a successful recycling program on campus by putting the Oregon Daily Emerald back in its original rack when you've finished reading it. This will allow another person to read it and/or be easily picked up for recycling.