

## PARKING

Continued from Page 1

public protests, and have called and written University administrators and Eugene administrative staff to condemn the idea.

"I appreciate the University's being sensitive to the feelings of local residents," said Campbell Club resident John Flanery of the decision to discontinue parking garage plans. "I'm very happy. I think it means the neighborhood exists for people who live here, not for people to park their cars."

"What it suggests is ideas like the free ridership program are working," Oliver said of the shift in parking demands.

The University has a contract with Lane Transit District to allow free bus rides to people who show University identification, paid with student and state funds. Oliver said Sacred Heart Hospital and Northwest Christian College have arranged similar contracts with LTD.

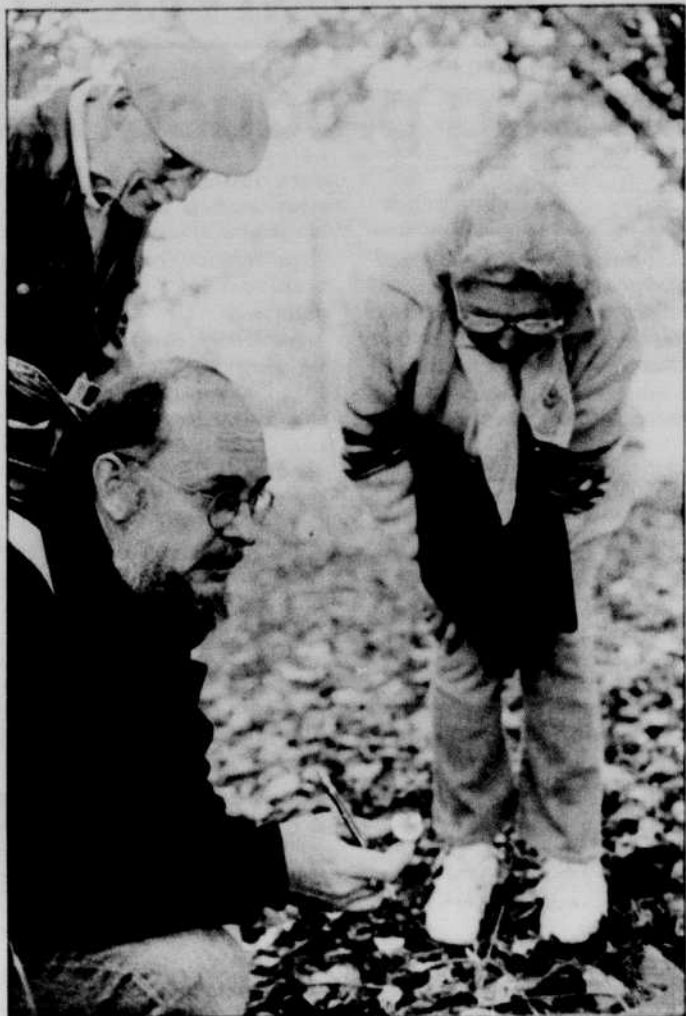
The State Emergency Board authorized about \$3.5 million last year to build the parking garage.

Oliver said at the Oregon State Board of Higher Education meeting in Corvallis Friday that administrators will request the remaining funds be diverted to improving, expanding and adding surface parking lots on campus.

By paving, striping and lighting the Bean Residence Hall parking lot, 140 parking spaces can be created. The same improvement of the Whittaker lot, north of Franklin Boulevard, will add 130 spaces. The University science complex offers 50 spaces, and another 30 spaces can be added around campus, Oliver said.

Adding bicycle parking facilities has also decreased demands for car parking, Oliver said.

"We know we have a parking shortage," Oliver said. "The challenge is, can we accomplish the same goals in different ways?"



## Mushroom hunt

Dave Wagner, University biology professor, leads nature lovers on a hunt for mushrooms and still blooming wildflowers in Alton Baker Park. This hour-long troll happens every Thursday at 12 p.m. until December 13.

Photo by Gail Russell

Anorexia Nervosa & Bulimia

**Binge Eating  
Crash Dieting  
Vomiting  
Laxative Abuse  
Compulsive Exercise  
Compulsive Dieting**



When you're ready to quit we're ready to help. Just call 686-7372.

The Eating Disorders Program at Sacred Heart



## Engine Service

1000 S. Bertelsen Rd. #8 Eugene OR 97402  
One Block North of W. 11th Nolan Ind. Plaza

Specializing in Volkswagen Service For 32 years

342-3952



**Student and Faculty Discounts**

### PIZZA PETE'S ITALIAN KITCHEN

ALL YOU CAN EAT!  
**SPAGHETTI SPECIAL**  
WITH GARLIC BREAD

**\$2.95** Tuesday only  
12 p.m. to 10 p.m.

2673 Willamette • 484-0996  
Next to the Black Forest Tavern  
Free Delivery

## Budget Travel Seminar

Find out the money saving basics by attending a free seminar and slide show.

Tuesday, November 13, 4:00  
Erb Mem. Union, Walnut Room

Sponsored by Career Placement and Planning and COUNCIL

Council on International Educational Exchange  
FOR LOW STUDENT/FACULTY AIRFARES AND MORE PROGRAM  
INFORMATION CALL  
228-2900 OR 1-800-228-2834

### HOME OF RECORDS

258 E. 13th 342-7975

Cash For LP'S, CD'S and Tapes

Open until 6 Sun-Thurs.  
Open 'til 7 Fri. & Sat.

★ WUNDERLAND ★  
GREAT FOR PARTIES AND BIRTHDAYS  
**5¢ VIDEO GAMES** ALL GAMES WORK WITH NICKELS  
ADMISSION \$1.50  
5TH STREET PUBLIC MARKET  
EUGENE • 683-8464

**DRINKING AND DRIVING CAN KILL A FRIENDSHIP**

The Customer Is Always Right. Well maybe... However your ideas combined with our technical and design experience can assure the ultimate in personal design, structural integrity and timeless satisfaction.

## Goldworks

1502 Willamette 343-2298  
Tues.-Fri. 9 am-1pm, 2 pm-6 pm  
Sat. 10 am-4 pm  
Evening appointments available

**BISTRO DINNERS \$6<sup>95</sup> & UNDER\***

# EXCELSIOR!

CAFE

\*From 5-6:30 Mon.-Fri., includes entree & dinner salad.

OPEN FOR LUNCH & DINNER DAILY 11:30-Midnight • 754 EAST 13th AVENUE, 342-6983

# IBM announces an enhancement to the PS/2.

## A high-speed loan.

Available to college students, faculty and staff\*

- Low interest rate
- Affordable payments
- Up to \$8,000 per loan
- Quick approval
- Easy to apply
- No application fee

To apply for an IBM PS/2<sup>™</sup> Loan for Learning visit your campus outlet or call the Nellie Mae Loan Hotline at 1 (800) 634-9308

Find out more at the Nov. 14 Fun Fair in the EMU Fir Room and the Microcomputer Support Lab  
Monday - Friday 9am-5pm 346-4402