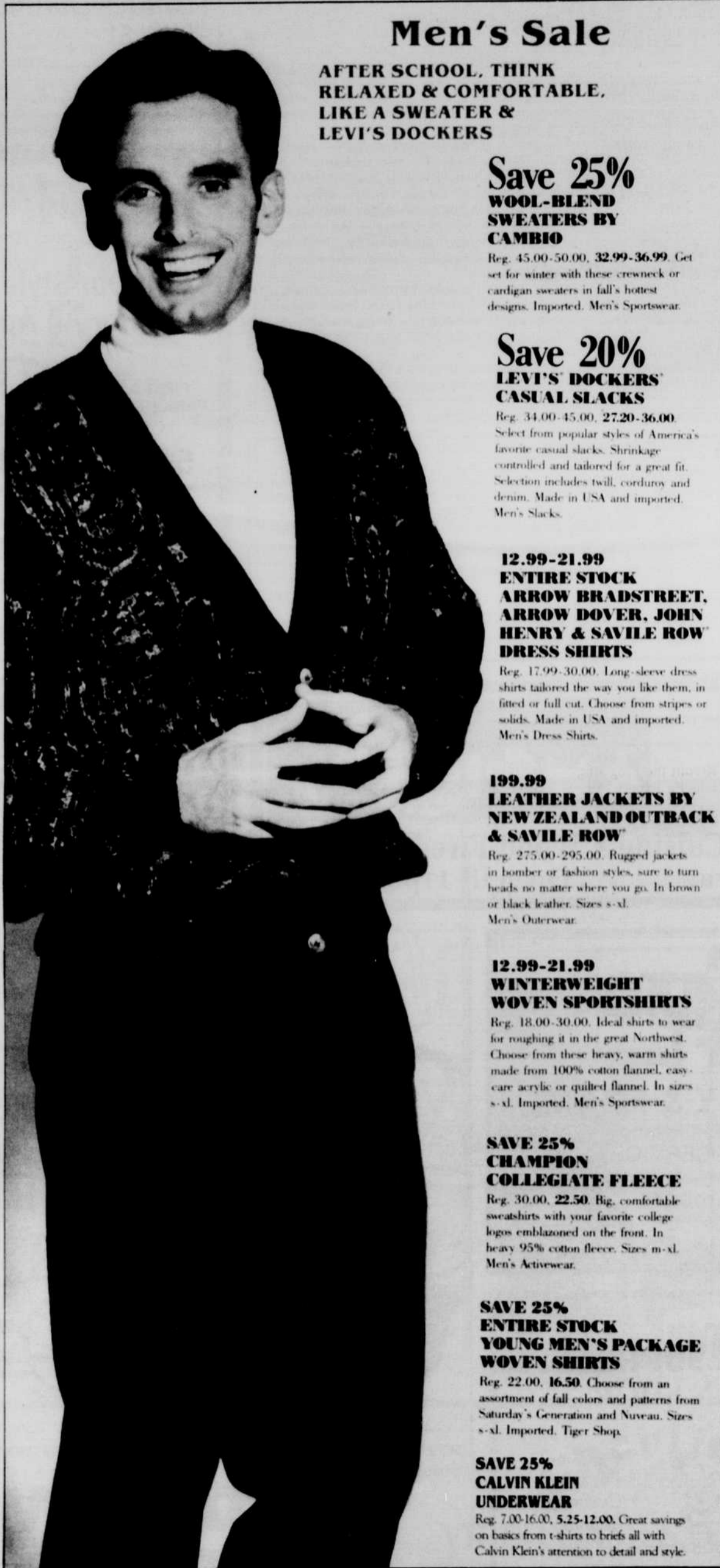


NOVEMBER 1 - 12



Men's Sale

AFTER SCHOOL, THINK
RELAXED & COMFORTABLE,
LIKE A SWEATER &
LEVI'S DOCKERS

Save 25% WOOL-BLEND SWEATERS BY CAMBIO

Reg. 45.00-50.00, **32.99-36.99**. Get set for winter with these crewneck or cardigan sweaters in fall's hottest designs. Imported. Men's Sportswear.

Save 20% LEVI'S DOCKERS™ CASUAL SLACKS

Reg. 34.00-45.00, **27.20-36.00**. Select from popular styles of America's favorite casual slacks. Shrinkage controlled and tailored for a great fit. Selection includes twill, corduroy and denim. Made in USA and imported. Men's Slacks.

12.99-21.99 ENTIRE STOCK ARROW BRADSTREET, ARROW DOVER, JOHN HENRY & SAVILE ROW™ DRESS SHIRTS

Reg. 17.99-30.00. Long-sleeve dress shirts tailored the way you like them, in fitted or full cut. Choose from stripes or solids. Made in USA and imported. Men's Dress Shirts.

199.99 LEATHER JACKETS BY NEW ZEALAND OUTBACK & SAVILE ROW™

Reg. 275.00-295.00. Rugged jackets in bomber or fashion styles, sure to turn heads no matter where you go. In brown or black leather. Sizes s-xl. Men's Outerwear.

12.99-21.99 WINTERWEIGHT WOVEN SPORTSHIRTS

Reg. 18.00-30.00. Ideal shirts to wear for roughing it in the great Northwest. Choose from these heavy, warm shirts made from 100% cotton flannel, easy-care acrylic or quilted flannel. In sizes s-xl. Imported. Men's Sportswear.

SAVE 25% CHAMPION COLLEGIATE FLEECE

Reg. 30.00, **22.50**. Big, comfortable sweatshirts with your favorite college logos emblazoned on the front. In heavy 95% cotton fleece. Sizes m-xl. Men's Activewear.

SAVE 25% ENTIRE STOCK YOUNG MEN'S PACKAGE WOVEN SHIRTS

Reg. 22.00, **16.50**. Choose from an assortment of fall colors and patterns from Saturday's Generation and Nuveau. Sizes s-xl. Imported. Tiger Shop.

SAVE 25% CALVIN KLEIN UNDERWEAR

Reg. 7.00-16.00, **5.25-12.00**. Great savings on basics from t-shirts to briefs all with Calvin Klein's attention to detail and style.

600 Valley River Center
503-343-2121
Fax 503-343-1929

Page 12B, Football Program

The BONMARCHÉ

10am-9pm Monday-Saturday
11am-6pm Sunday

Friday, November 2, 1990