

## UNIVERSITY

### Special ed minor offered

By Soo May Wong  
Emerald Contributor

Beginning this fall, a new academic minor in special education is being offered through the College of Education.

The minor, approved last April, prepares students who are planning a career working with handicapped individuals in non-school settings, or who want to learn more about people with special needs.

Kathy Jungjohann, a special education adviser, said the minor offers students an opportunity to learn about special education at the undergraduate level.

Before the minor was introduced, interested students first had to complete their undergraduate requirements and then a year of elementary education before taking a year in special education, Jungjohann said. "Students could only get into special education in their sixth year," she said.

Sara Robinson, a student in the minor program, said the minor also provides background and enhances students' educations before they enter their fifth year studies. The fifth-year program includes courses for a teaching certificate in either regular education or special education.

Admittance to the fifth-year program is highly competitive said Tammy Tucker the first student to complete the minor.

She said that students must secure a strong grade point average to ensure admittance to the program. An added advantage would be having related experiences or doing a practicum, she said.

Practicums are offered with the minor as three-credit coursework. The practicum exposes students to people with special needs beyond the classroom setting.

Information about the minor in special education can be obtained from the peer advising office in the Education Building, Room 117. The application deadline for winter term is Nov. 2, and the deadline for spring term 1991 is Feb. 15.

### FACULTY MEMBERS & GRADUATE STUDENTS

YOU HAVE A CHANCE  
MAKE A DIFFERENCE!

*The UO Bookstore is looking for you to fill an important position on the Board of Directors.*

**GRADUATE POSITION:** The position is that of a student currently of graduate school standing. For purpose of membership on the Board a graduate student must be fully accredited in the graduate school and must maintain a course load of not less than 9 units. The term of office will run until June 1991.

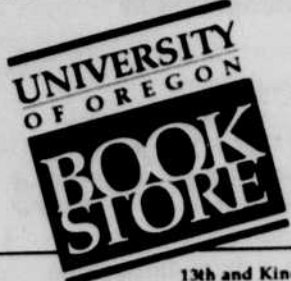
**FACULTY POSITION:** The position is that of a teaching faculty (officer of instruction). For purpose of membership on the Board a faculty member must be a full-time professor, associate professor, assistant professor, or instructor employed as an officer of instruction on the Eugene campus. The term of office will run until June 1991.

UO Bookstore board members represent the student, faculty and staff of the University of Oregon, and have the opportunity to guide the bookstore in policy matters. Members attend monthly meetings, and receive a \$30 stipend per month.

**ALL APPLICANTS** must pick up your application packet in the Administrative Office (at the rear of the second floor of the UO Bookstore). Applications for these two positions on the UO Bookstore Board will be taken until **6:00 p.m., Friday, November 2, 1990.**

The Election Committee of the Board will screen all applicants and will select applicants for a personal interview. All applicants will be notified whether or not they have been selected for an interview.

For more information, please contact either Jim Williams or Lisa Burkhart at 346-4331.



Have A Say  
In The Future  
Of Your  
Bookstore!

13th and Kincaid, M-F 7:30-6, Sat. 10-6, Ph. 346-4331

"Preventative maintenance

is a fine art"



BOSCH AUTHORIZED SERVICE

European  
Auto

1917 Franklin Blvd., Eugene  
485-8226

EMU CULTURAL FORUM PRESENTS

## THE BOB MOULD BAND

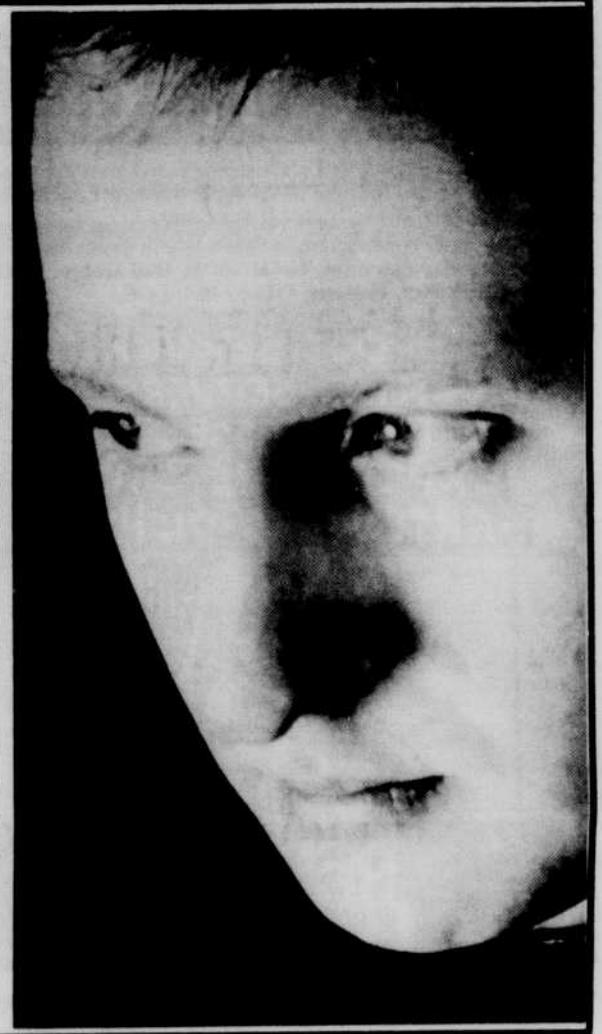
FEATURING ANTON FIER  
AND TONY MAIMONE  
WITH SPECIAL GUESTS

**ultra vivid scene**

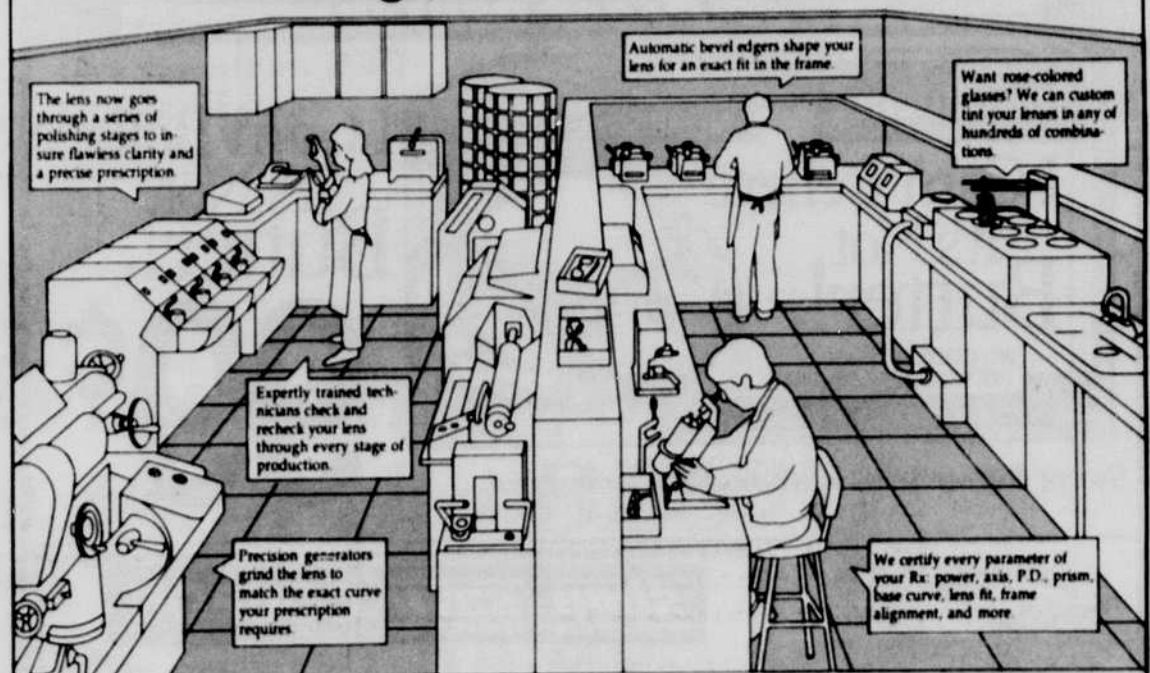
EMU BALLROOM  
8 PM NOV. 11

\$12 Gen'l. Public \$9 UofO

Tickets available at EMU Main Desk, Record Garden, Face the Music, CD World, House of Records



### A self-guided tour of our lab.



The fastest service in Eugene for glasses and contacts.

rainbow  
optics

Hours: 8 am to 7 pm, Mon.- Fri.  
Saturday, 8 am to 5 pm  
Visa and Mastercard accepted

766 E. 13th Ave.  
Just one block from campus  
343-3333