

# UNIVERSITY



## POWWOW

Dancers dressed in traditional clothing for a powwow Saturday night sponsored by the Native American Student Union.

Photo by Andre Ranieri

## WIT holds support group meetings

### MEETINGS

**KRMA** will hold a general meeting at 8 p.m. in Room 110 Willamette Hall. For details call 342-7080.

**CD-ROM tutorial** on the General Science Index will be at 2:30 p.m. in the Science Library's reference area. Call 346-2368 for more information.

**EMU Suite 300**, is noon the day before publication. Et als run the day of the event unless the event takes place before noon.

Deadline for submitting Et als to the Emerald front desk.

Notices of events with a donation or admission charge will not be accepted.

### Et als

**Students for Choice** will hold their final get out the vote meeting at 5 p.m. in Room 303 Chapman Hall. Call 683-0809 for more information.

**Students for Creative Anachronism** will meet in Agate Room 1 at 8 p.m. Their will be dancing, games and contests. Call 485-8608 or 683-1117 for more information.

**Students for the Ethical Treatment of Animals** will hold its weekly meeting in Room 155 Straub Hall at 5 p.m. Call 346-4356 for more information.

**Women In Transition's** 35 and alive support group will meet from 7 to 9 p.m. at the YWCA house, 841 E. 18th Ave. Call 346-4099 or 346-4095 for information.

**Women In Transition's** lesbian support group will meet from 6 to 7:30 p.m. in EMU Century Room F. Call 346-4099 or 346-4095 if interested.

**ARCO/Alaska** will be on campus for an informational session and reception from 7 to 8 p.m. in Room 228 Chiles Center.

### MISCELLANEOUS

**CD-ROM tutorials** on the ABL/Inform (business) and the PAIS systems will be held at 12:30 and 2:30 p.m., respectively. The sessions will be in the Knight Library's reference department. Call 346-2368 for details.

Oregon Daily Emerald



## SAVE A LIFE!!!

- Prepare yourself for those critical moments when you can save a person's life by learning C.P.R.
- Receive a C.P.R. certification card upon completion of the workshop.
- C.P.R. workshop begins Tuesday, Nov. 6, 6pm to 10 pm

Limit 8 people.

**To pre-register call  
346-4456.**

**\$3.00 charge for certification card.**

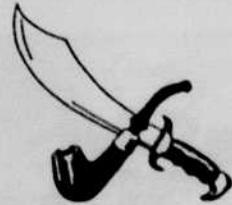
Sponsored by the Lifestyle Planning Program, Student Health Center and Public Safety.

## SMOKE SHOP

TOBACCO • PIPES • LIGHTERS • INCENSE  
KNIVES • GIFTS • CANDY

1124 Main St., Springfield, OR 97477  
Mon-Sat 10-8 Sun 12-6

503-747-8529  
800-782-9495



## Firestone

AMERICA'S HOME FOR CAR SERVICE



"Did you know  
Americans waste  
600 million  
gallons of fuel  
each year due to  
underinflated  
tires? Check  
it out!"

### FREE 4-PT TIRE CHECK

- |                |               |
|----------------|---------------|
| 1 AIR PRESSURE | 3 TREAD DEPTH |
| 2 TREADWEAR    | 4 VALVE STEMS |

### FAST LANE

Mounting in Minutes Guaranteed!

See **SUNDAYS** At starred locations below.

### FRAMPTON PASSENGER

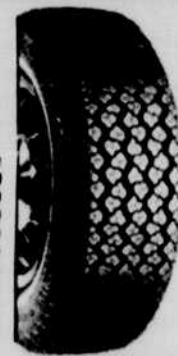
#### 1200" RADIAL

- All season
- Steel belted

**\$25<sup>99</sup>**

Whitewall	Price
155/80R13	\$25.99
175/80R13	28.99
185/75R14	32.99
195/75R14	33.99
205/75R14	34.99
205/75R15	36.99
215/75R15	37.99
225/75R15	38.99
235/75R15	39.99

Call for other sizes.



### BRIDGESTONE

### IMPORT

#### \$402 RADIAL

- All season steel belted
- Super Filler bead
- S-speed rated

**\$37<sup>99</sup>**

Blackwall	Price
165SR13	\$41.99
175/70SR13	44.99
185/70SR13	48.99
185/70SR14	51.99
195/70SR14	55.99
205/70SR14	58.99



Lube,  
Oil & Filter  
**\$15<sup>99</sup>**

- Install new Firestone oil filter
- Refill up to 5 quarts 10W-30 oil
- Lubricate chassis

Flush & Fill  
**\$29<sup>99</sup>**

- Remove rust and contaminants from radiator and cooling system with system power flush
- Refill up to 2 gallons of coolant

**90 DAYS SAME  
AS CASH**

We also honor

No Appointment Necessary • East 11th Store Only

Just a short walk from Campus

**345-1593 • 185 E. 11th**

Looking for a good deal?? Read the Oregon Daily Emerald Classifieds.

