

Radio

Continued from Page 4

feature radio programs with local artists.

KRMA, FM 88.1, will be operated in conjunction with KWAX. January said KWAX applied several years ago for the additional frequency.

January said KWAX will operate a children's program from 9 a.m. to 2 p.m. The remainder of the air time will be operated by KRMA.

Gary Rosenstein, a member of Campus Radio, said the station will operate 24 hours a day.

"We'll be a 24 hour station as long as we can get students who want to be on the air in the middle of the night," Rosenstein said.

January said students have been trying to start KRMA for several years. He said the station will be operated by students and will offer a mixed format of music, news, radio drama and comedy.

"We have 80 to 100 people who want to do something on the air," January said.

The station may also cover various student activities like women's basketball.

Friday's last day to file for ASUO candidacies

With the March 30 deadline for student body elections just days away, only three candidates have filed for office, said ASUO elections board chairman Dylan Coulter.

Students have filed candidate petitions for one Student Senate seat, one EMU Board position and one Incidental Fee Committee spot.

The four students who have announced their campaigns for ASUO president and vice president have not officially filed with the elections board, Coulter said.

Students who wish to run for student body president and vice president or for positions on the IFC, EMU Board, Student Senate or President's Advisory Council need to bring their petitions and a piece of identification to the elections board in Suite 3 EMU by 5 p.m. Friday.

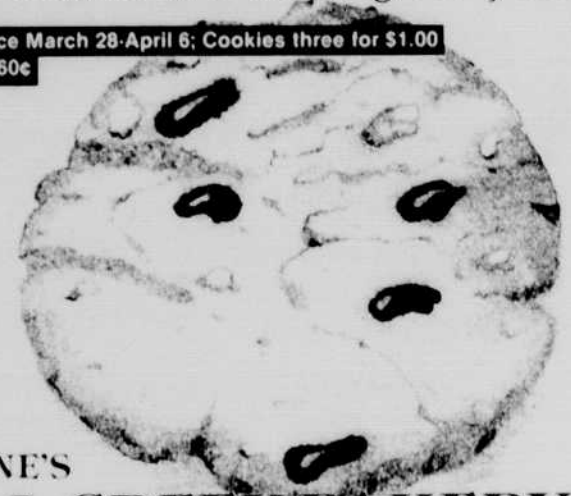
Candidate statements for the ASUO Voters' Guide are also due by 5 p.m. Friday.

All ballot measures must have their wording approved by the Constitution Court and signatures verified by 5 p.m. Wednesday, April 4.

WELCOME BACK

Our cookies are waiting for you!

Special Price March 28-April 6; Cookies three for \$1.00
Reg. Price 60¢



EUGENE'S FALL CREEK BAKERY

881 East 13th next to UC bookstore • 484-1662 • M-F 7:30-6 Sat 8-3
Now open Sundays 8-3

ARE YOU THE EXCEPTION OR THE RULE?

Are you always the one digging deeper, working harder, and following through with projects long after the others have gone? If you are, and if you are interested in working with other exceptional people, then we would like you to apply for these openings.

The Oregon Daily Emerald Advertising Department currently has openings for Jr. Sales Representative positions. These positions will turn into sales positions next year (and possibly during summer) after intensive training in sales, marketing and general business procedures. The positions require use of a car (NO MOPEDS/BICYCLES), minimum one hour a day and, of course, unlimited enthusiasm and energy!

We have to be honest when we tell all those interested in applying for these jobs that the competition is tough. But, we always need qualified salespeople and now more than ever, experience on a daily morning paper will give you invaluable "real world" experience.

Please APPLY TODAY

for positions starting next fall!

Pick up an application in room 300 EMU
CLOSING DATE: APRIL 6

Please also plan to attend a preliminary informational meeting
April 12th, 7 pm EMU Board Room

ODE is an equal opportunity employer



School of MUSIC
UNIVERSITY OF OREGON

THIS WEEK at BEALL HALL:

961 E. 18th Ave.

"THE MAIN EVENT"

Faculty Artist Series
Charles Dowd, percussion, and Jeffrey Stolet, composer, square off in a Battle Royale!

March 28 & 29 8 p.m.
(Dougherty Theatre)
\$4 General Admission
\$2 Students & Seniors

BACH BIRTHDAY BASH
The KUGN Morning Show broadcasts live from Beall Hall, featuring music faculty and friends.

Thurs., March 29
8-10 a.m.
FREE Admission

For more information, call:
346-3761 (Music School)

★ **WUNDERLAND** ★
GREAT FOR PARTIES AND BIRTHDAYS
5¢ VIDEO GAMES ALL GAMES WORK WITH NICKELS
ADMISSION \$1.50
5TH STREET PUBLIC MARKET
EUGENE • 683-8464

▶ Looking for a good deal?
Check the Emerald ADS.