

ALASKA SUMMER JOBS

Experience a summer adventure in Denali National Park (Mt. McKinley), Alaska. ARA Outdoor World is offering 500 plus positions in all aspects of hotel/resort operations.

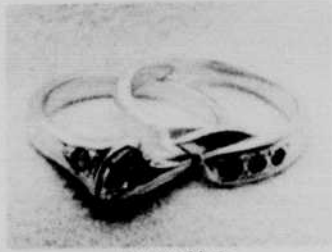
Sign up for 3/2 interview at Student Employment, Rm 12 Hendricks Hall.

Equal Opportunity Employer

Goldworks

1502 Willamette
Mon-Fri: 10 am-6 pm
Sat: 10 am-4 pm
343-2298

All Work Done on Premises



Custom Made
14K Wedding Set with
Marquis Diamond & Ruby Accents

If you are looking for this image . . .

I. Magnin Saks Fifth Avenue
Bloomingdales Neiman Marcus

I have what you want,
creative hairstyling by



David R Fletcher
at Studio 340.

340 E 11th • 484 0086

Next to Aliz Dresser • phone number unlisted
formerly of London Hair Studio 11

University

Rainforest action group to meet

MEETINGS

OSPIRG's Solid Waste group meets tonight at 5 in Room 206 Deady.

TRASH's initiative group will meet with

Et als

Campaign Director Bob Jenks tonight at 6 at 1805 Garden St. No. 20.

Students Against Apartheid meets tonight at 5:30 in EMU Cedar Room F.

Ocean Ecology Group: Energy Alternatives for the Future meets tonight at 6 in EMU Suite 1.

Rainforest Action Group of Eugene meets tonight at 5:30 in EMU Suite 1.

Incidental Fee Committee meets Thursday night at 6:30 in Room 109 Friendly to hear budget requests from the following groups:

- Master of Business Administration Association
- University Song and Dance
- OPSHA
- American Ad Federation
- AVENUE
- Graduate Student Organization, division of educational policy
- PHSC
- Solar Energy
- ASID
- Minority Law Enforcement Association
- Muslim Law Association
- OIMB
- RIDESHARE
- Pre-Law Society
- Big Time Poetry Theatre
- CIE

Men Against Rape meets tonight at 7 in EMU Century Room E.

Mortar Board meets tonight at 6 in EMU Cedar Room A. All members are asked to attend.

SPEAKERS AND LECTURES

President Myles Brand will hold open office hours today from 3 to 5 p.m. in his office, Room 110 Johnson Hall. Students, faculty and staff are welcome. Twenty-minute appointments are available by calling 346-3036.

George Atiyeh, Opal Creek activist, will speak about the ancient forest conflict in Oregon and will show the video "Rage over Trees" tonight at 7:30 in Room 100 Willamette. For more information, call the Outdoor Program at 346-4356.

"Jewish Men and Jewish Women" is the title of a group discussion to be facilitated by Jerry Diller, an ethnotherapist. The discussion will

take place today from 3:30 to 5 p.m. in the EMU Ben Linder Room.

"From Darwin to Wilson: The Avatars of Evolutionary Ethics" is the title of a lecture to be given by Paul Farber, professor of history of science at Oregon State University. The presentation will be tonight at 7:30 in the EMU Gumwood Room.

MISCELLANEOUS

OSPIRG elections for local and state board officers will be held today in EMU Suite 1 from 9 a.m. to 5 p.m.

Student Mass will be celebrated tonight at 9 at the Newman Center, 1850 Emerald St.

Alaska's Arctic Refuge: A Wilderness in Peril is the title of a film to be shown tonight at 6 in Straub Room 159. The presentation is part of the Survival Center's Wednesday Night Film Series.

Free blood pressure checks will be given today in the EMU Lobby. The tests are given by Asklepiads and the Pre-Health Sciences Center.

Latin American Support Committee will present "Environment Under Fire," a 30-minute film exploring the socio-economic roots of environmental destruction in Central America and presents sustainable development alternatives that are occurring in Nicaragua. There will be two showings today at 11:30 a.m. and 12:30 p.m. in the EMU Ben Linder Room.

Upward Bound and the Educational Opportunity Program will hold a reception to celebrate educational opportunity programs for disadvantaged students today from 4:30 to 7 p.m. in Gerlinger Lounge.

Environmental Issues in Eugene's Sister City Irkutsk and in the Soviet Union is the topic of a panel discussion to be held tonight at 7:30 at the Zone Gallery, 411 High St. Participating will be Mike Axline from the University Environmental Law Clinic; John Baldwin from the environmental studies department; Kate Gessert, a horticulturist from the Eugene-Irkutsk Sister City Committee; and Tom Rainey, an authority on Siberia's Lake Baikal from Evergreen College in Olympia, Wash.

Deadline for submitting Et als to the Emerald front desk, EMU Suite 300, is noon the day before publication. Et als run the day of the event unless the event occurs before noon. Please submit Et als the day before they are to run only. Notices of events with a donation or admission charge will not be accepted. Campus events and those scheduled nearest the publication date will be given priority. The Emerald reserves the right to edit notices for grammar and style.

University of Oregon
Student Health Center

MEASLES VACCINE NOT JUST FOR KIDS

Did you know...

- "Vaccine failure" among college-age persons and young people account for 50% of measles cases
- The measles outbreak this last year was the worst since 1980
- The death toll for measles is the highest in 18 years
- The measles outbreak in Medford and Ashland last spring included student teachers from Southern Oregon State College

The measles "shot" you got as a child isn't enough!

According to the Oregon Department of Health, college students in Oregon should obtain a second dose of measles vaccine. (Students born before 1957 would be exempt from this recommendation).

Measles vaccine is available at the Student Health Center for approximately \$22.00.

No appointment necessary.

For more information, call
your Student Health Center nurse:

686-4441

shop & save FOOD WAREHOUSE



CHICKEN
OF THE
SEA TUNA

6 1/2 oz. OIL OR WATER

58¢
ea.

CHUNK LIGHT

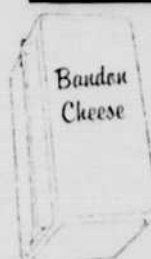
BULK
FOOD

HEALTH
FOOD

BAKERY

NEW
DELI

shop & save COUPON



BANDON
2 LB
CHEDDAR
CHEESE

\$2.98

FIRST ONE

#1003 EXPIRES 2-27-90

17 Coburg Rd.
Hours 7 a.m.-11 p.m.

7 days a week
683-8670

AD EFFECTIVE
THRU 2-27-90