

State athletes make Seoul

Seven athletes from the State of Oregon will join distance runner Mary Slaney in Seoul, South Korea for the 1988 Summer Olympics after qualifying this week at the Track and Field Trials in Indianapolis.

Slaney won the women's 3,000 meters Sunday to secure a spot on the team, and is now looking to double in the Olympics by qualifying this weekend in the 1,500.

Other women athletes joining Slaney in Seoul will be former Oregon State athlete and Eugene resident Cindy Greiner, who finished second behind world-record-setter Jackie Joyner-Kersey in the heptathlon; five-time Olympic Trials competitor Karin Smith,

who captured second in the javelin competition; and Lynda Hughes-Sutfin, a graduate of Newburg High School and the University, who finished third in the javelin.

Men earning spots on the team this week include former Duck Brian Crouser of Gresham, whose throw of 260-8 was good enough for second in the javelin competition; former University track member Ken Flax, who captured first place in the hammer throw with his toss of 253-6; Lance Deal of Eugene, the second-place finisher in the hammer with a throw of 248-2; and Eugene resident Steve Plasencia, who finished second in the men's 10,000 with a time of 29:08.58.

LATE NITE WITH
The Fresh Alternative

SUBWAY
Sandwiches & Salads

7 NIGHTS A WEEK
At any of our 5 convenient locations.

BUY 1 GET 1
VALID 10 p.m.-2 a.m.

96¢
for only

Not good with any other promotional offer. (of equal or lesser value) (except double meat)

10th & Hulvard • 464-6955
Call bus. locations

• No Coupon Necessary
• Offer Good Thru 7/23/88
• Valid 10 p.m.-2 a.m.

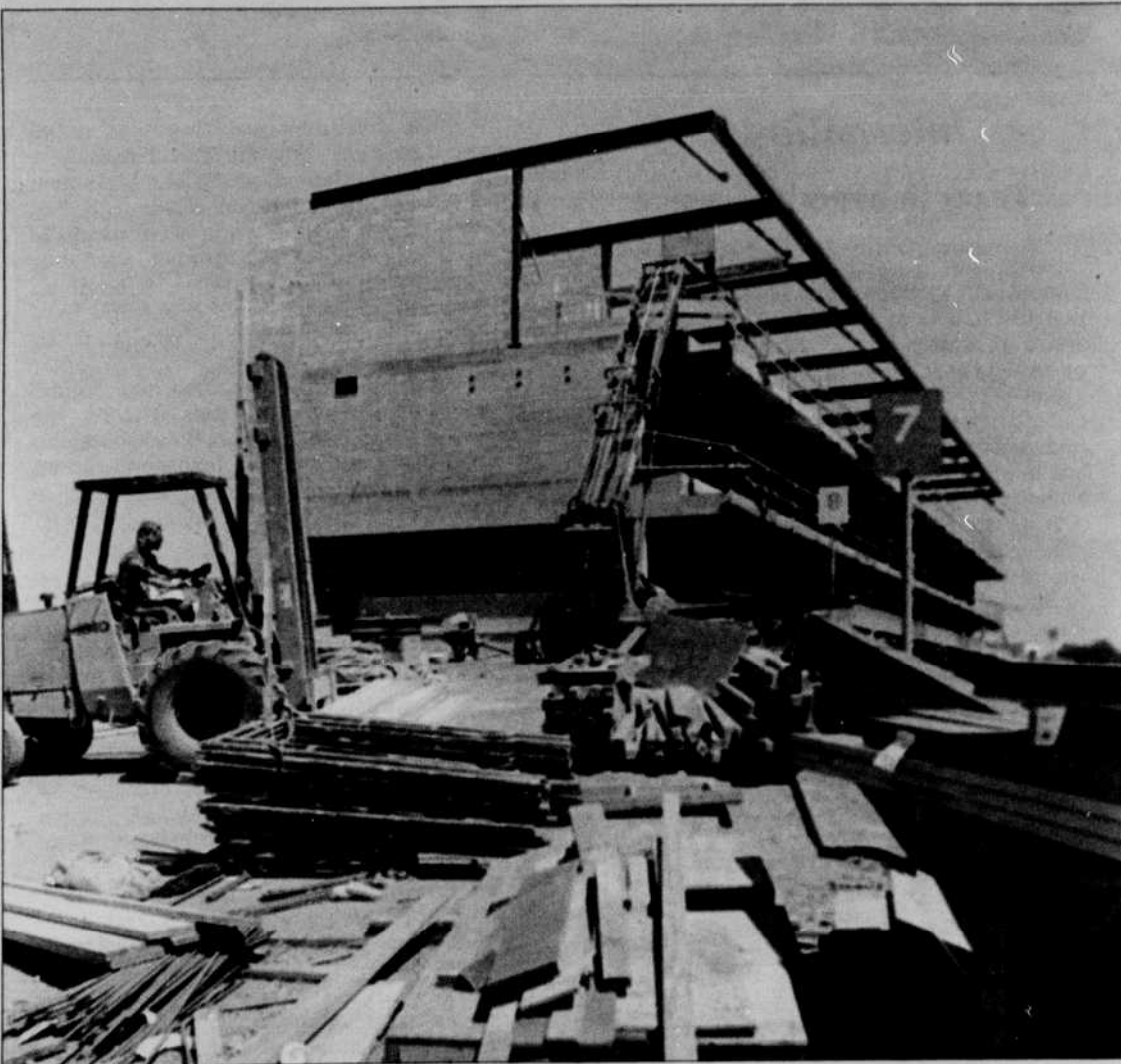


Photo by Ted Shepler

Construction of new press box facilities at Autzen Stadium is well underway, and is expected to be completed by late August.

Autzen press box project moving ahead of schedule

By Gary Henley
Emerald Sports Editor

The construction of a new press box at Autzen Stadium is three weeks ahead of schedule according to University Athletic Director Bill Byrne, who added that the project should be completed by Aug. 20.

"It's looking real good right now," Byrne said, referring to the on-going construction. "We'll be ready for the opener."

The Ducks begin the season with a home game against Long Beach State on Sept. 10.

The new and improved press box was designed by University Sports Information Director Steve Hellyer. After "years and years" of complaints by media personnel, the press box, named for Arthur M. Litchman, is taking on a new look in a different location.

The press box, formerly situated atop the bleachers on the north side of the stadium, will now take that position on the south side of the field.

Two main reasons for the renovation and the switch of location are to unite the print media and the television cameras on one side of the field while at the same time creating more space for the working press and giving television crews a place more suitable for shooting the action.

The press box formerly accommodated 42 members of the press in a three-tier press area with larger booths for radio and television announcers.

A lounge area for members of the media and meetings with recruits also will be available in the new press box.

"The press area will definitely be more spread out, more like Oregon State's," Byrne said. "There's going to be space for about twice as many people."

"One of the main problems with the old press box is that they built it on the wrong side of the field," he continued. "The TV cameras were shooting right into the sun."

The television cameras will

now be positioned in a bay area right below the print media on the south side of the stadium.

The print media also will benefit as members of the press will now have access to instant replays via closed circuit TV.

The accommodations in the new press box will not be state of the art, Byrne said, but will take on the look of the more up-to-date, modern press boxes.

"They won't be lavish, but they'll be a lot more comfortable because of the increase in space," he said.

"They'll be more set up for TV broadcasts, visiting school radio networks, and visiting athletic directors," he added.

Sky boxes, or sky suites, will take the place of the old press box.

Nine of the suites will be available for sale to sponsors and donors, while the other two suites will be reserved for the University's president and athletic director.

The sky boxes will feature lower-level private suites and a top level master suite.

Can you
afford to gamble
with the LSAT, GMAT,
GRE, or MCAT?

Probably not. Great grades alone may not be enough to impress the grad school of your choice.

Scores play a part. And that's how Stanley H. Kaplan can help.

The Kaplan course teaches test-taking techniques, reviews course subjects, and increases the odds that you'll do the best you can do.

So if you've been out of school for a while and need a refresher, or even if you're fresh out of college, do what over 1 million students have done. Take Kaplan. Why take a chance with your career?

KAPLAN
STANLEY H. KAPLAN EDUCATIONAL CENTER LTD.
DON'T COMPETE WITH
A KAPLAN STUDENT—BE ONE

FREE DIAGNOSTIC TESTING
485-5699

Birkenstock

+ COLOR

SUMMER FUN

Birkenstock
of Eugene

IBIZA

\$46.00



Match your wardrobe in red, navy, tan, bone, grey and white. Limited edition pastel colors still available in most sizes—peach, yellow, and light blue.

342-6107

Fifth-Pearl Shops, 207 E. 5th • Mon-Sat 9-6, Sun 12-5.