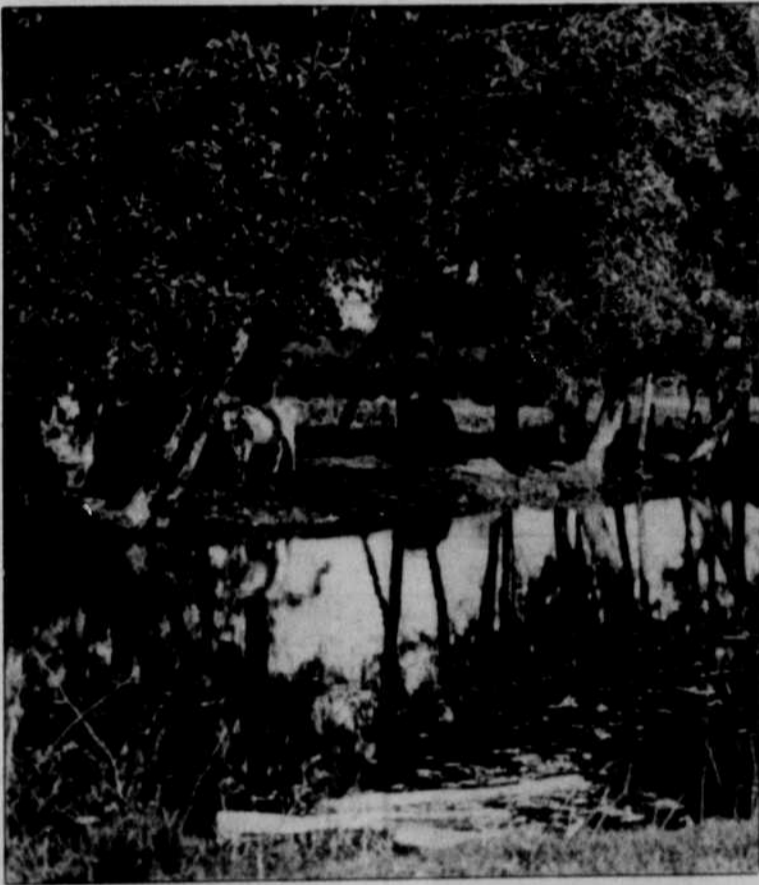




Photo courtesy of University Archives

In the late 1800s, the Millrace was a clear waterway where students went canoeing (above) and cows grazed along its banks (below). Now an excessive amount of trash has threatened its survival. Those who wish to return the Millrace to its previous state hope to rally community support.



class in his major, landscape architecture. Now he is trying to get the Eugene Planning Department to take note.

Thursday night he presented the plan to a meeting of the West University Neighbors Association, hoping to gain some community support for the project. Yimsut's 30-minute presentation included some 70 slides and received plaudits from the 35 residents who viewed it.

The two biggest problems of the Millrace are erosion and garbage buildup, Yimsut said. To prevent garbage from stagnating in the canal, Yimsut proposes pumping water into the Millrace at a greater rate and reconnecting the end of it to the Willamette River. To prevent erosion, Yimsut proposes building concrete walls on parts of its banks.


His plan also includes considerable beautification. The plan calls for building several ivy-covered footbridges across the canal, adding a pathway for

Turn to Millrace, Page 4

Be a Winner

EARN \$90.00 MONTHLY AND MORE
Become a regular plasma donor

\$5 bonus in addition to the usual fee.



— with this coupon —

New Donors Only

EUGENE PLASMA
1071 OLIVE • 484-2241

Donor Hours
M - Th 7:30 - 6:00
Fri - till 4:00; Sat 9-3

omucultural forum presents

CAMPER VAN BEETHOVEN

ONLY OREGON APPEARANCE IN EUGENE



\$5.50 adv. plus Short Dogs Grow and starring "JACKSON"

The Most Sensational Pop Group Since The Beatles!

FRI OCT. 16 8 P.M.

EMU BALLROOM

TICKETS AT USUAL OUTLETS

RESUMES Give your resume a professional look by having it typeset at the Oregon Daily Emerald's **Letter Perfect Graphics** located in Suite 300, EMU, or call 686-5511.

THE FAR SIDE By GARY LARSON



"And always — always — remember this: A swimmer in the water is worth two on the beach."

GRAND OPENING

SAM'S BAKERY

- Danish Pastries
- Cookies
- Croissants
- Muffins
- Apple & Blueberry Turnovers

Also serving **GOURMET COFFEE**

810 East 12th
Next to SAM'S TO GO
(Open 7:00 A.M. to 4:00 P.M.)

Buy any menu item and receive the second menu item of same or lesser value **FREE.**

Expires October 8, 1987

