

# THINGS TO DO

## Bijou Continued from Page 19C

Lamonte also will remodel the lobby to keep the expected larger crowds from getting congested in the area. And by the end of fall, he hopes to have the main auditorium remodeled as well. He may reduce the size of the screen, slope the floors for better vision and "hopefully" get new seats, he said.

One aspect of Bijou remodeling Lamonte suspects will be popular is the newly installed outside courtyard.

"I think the courtyard will be a neat little hang out," he said.

Lamonte attributes the increase in film popularity to a rise in the quantity of films pro-

duced in Hollywood and worldwide, he said. Movie companies are making large amounts of money in the home video market and that in turn leads to the production of more films.

"After all, film companies don't reinvest in steel mills, but more films," he said.

For its regular features, the Bijou tends to offer mostly special interest or intellectual art films, Lamonte said, although adding he dislikes the term "art film."

"We rarely show Hollywood films. That's not because I have anything against Hollywood films," he said. Generally, the films are one-half foreign or foreign language films, and the others are American "art" films that people generally have to pay more attention to. Or as he

said, "films as films rather than movies."

Regular features this summer included "My Life As A Dog," "Spalding Gray's Swimming to Cambodia," "Prick Up Your Ears" and "Working Girls."

The Bijou late show also has a special attraction to college students. Lamonte said they will show almost anything late at night.

"The more outrageous the better," he added. This summer's late night showings included the Jonathan Demme film "Something Wild," "Black Widow," "Reform School Girls" and "Lethal Weapon."

Lamonte also mentioned bringing the "Rocky Horror Picture Show" back to the Eugene area for the first time in several years. Although the details are

not solidified, he may be able to get it for around Halloween, he said.

Lamonte said the Bijou is glad to be the "campus theatre," but doesn't see any competition between the theatre and campus organizations that show films, like the Cultural Forum, he said.

"We show almost all first run movies," he said, while the campus groups show mainly second run. And Lamonte said he certainly sees a market for both at the University.

"The very nature of what they (students) are doing makes them more open to new experiences," like intellectual or "art" films, he said. The Bijou offers discounts to students, has a Monday bargain night and on Tuesday gives free popcorn with paid admission.

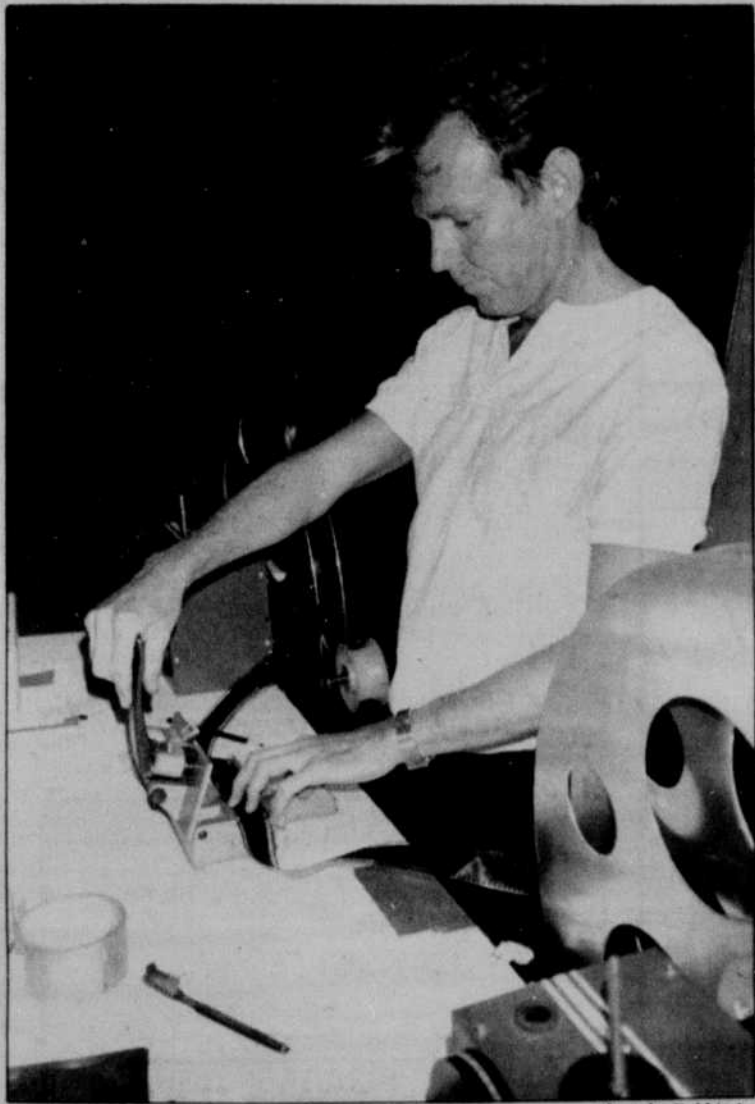


Photo by Bobbie Lo

Lamonte demonstrates the loading of the Bijou's 60 mm projector. The Bijou has provided entertainment to the University community since October 1980.

## Forum Continued from Page 22C

Heritage music covers a wide spectrum of fields, including ethnic, folk, and world music of different traditions, and traditional jazz and blues, he said.

"Knowing what will be received well in Eugene is always a problem," he said. He has already lined up three acts for a fall series of concerts: the Red Clay Ramblers, a string band, Garnet Rogers, a Canadian acoustic folk singer, and Obo Addy & Kukrudu, who combines Western and Ghanaian drum music.

Gosar said there are some problems in scheduling heritage

music, especially since many of the big names are not well-known to the general student population.

"I always welcome input," he said. "I may have to refer a student to another coordinator, but even that is useful to me and other members of the forum."

Other members of the forum include Popular Music Coordinator Jim Carlton, Small Concerts Coordinator Barry Derlago, Contemporary Issues (lectures) Coordinator Anne Portinga and Events Crew Coordinator Sally Roe.

**Great Haircuts are all we do!**  
**Still only \$7<sup>00</sup>**

**PRECISION HAIRWORKS**

29th & Willamette (behind Round Table Pizza)  
No Appointments 343-1182  
Mon. & Fri. 9-6 Tues.-Thur. 9-6 Sat. 9-5

Oregon Daily Emerald ODE Oregon Daily Emerald ODE Oregon Daily Emerald ODE  
Oregon Daily Emerald ODE Oregon Daily Emerald ODE Oregon Daily Emerald ODE  
Oregon Daily Emerald ODE Oregon Daily Emerald ODE Oregon Daily Emerald ODE

## We have what you want...

- Heavy Fleece Sportswear
- Sewn-on Letters
- Just minutes away!
- Incredible Selection: Party favors, Greek Jewelry, Greek Novelty and much, much more!



We've got it all!!

**The Campus Connection\***  
2013 NW Monroe  
Corvallis, Oregon 97330  
#754-7606

• Phone orders accepted!

\*a Balfour House

## Letter Perfect Graphics

ODE offices Suite 300 EMU **686-5511**

No matter who you are. . . . .  
professional typesetting and graphics can help you this fall.

- Geography students: We can typeset your map titles and place names in a variety of type styles.
- Psychology students: Your graphs and charts will look sharper with professional typesetting and camera work.
- Design students: Give your designs a finished look with typeset copy and camera work.
- Education students: Your presentations can be more effective with graphics and typeset captions.

