

New journal to focus on environmental law

By Carolyn Lamberson
Of the Emerald

University law school students have published the inaugural edition of the Journal of Environmental Law and Litigation, a publication that focuses on both practical and theoretical aspects of environmental law, said third-year law student Keith Bartholomew, the journal's editor-in-chief.

Most law reviews focus on just theoretical aspects of law, Bartholomew said. This journal differs not only in focus, but in those who contribute to the journal as well, he said.

"Law reviews by and large publish mainly works by academicians — in fact, almost exclusively. We're trying to get contributions from the practicing bar as well," Bartholomew explained, adding that more than half of the articles in the first edition were written by practitioners.

The first edition was published through a \$6,400 seed grant from the Incidental Fee Committee in October 1985 and came about as an outgrowth of the law school's Environmental and Natural Resources Law Program, said Michael Axline, an assistant law professor and one of the journal's faculty advisers.

"The University of Oregon law school, of course, has the leading environmental and natural resources law program in the entire country, and this journal is a natural outgrowth of this

school's commitment to environmental and natural resources law," Axline said. "It's also an outgrowth of the annual Western Public Interest Law Conference, the premier environmental law conference in the country."

Putting together an academic journal is a complicated process, and part of the reason it took a year and a half to complete the final product was the fact that the staff was starting from scratch, Bartholomew said.

"When you're starting from new, you're not reinventing the wheel, you're inventing it for the first time," he said. "We really did start from ground zero."

Executive Editor Xavier Lavoipierre said the staff has been meticulous in its editing to provide some legitimacy for the journal.

"We want scholars to buy the journal, and we want people who read it to be able to rely on all the research that's in there," he said.

The staff believes the journal will become a valuable source of information in the area of environmental law for practicing attorneys and others interested in environmental issues, Bartholomew said.

"There are a lot of people in Oregon — citizen groups who are interested in environmental law — and they are extremely sophisticated," he said. "I don't think there's anything in here they couldn't get an entire grip on."

Pianist Continued from Page 1A

Roan, along with Bernard Dobroski, dean of the University music school, also managed to get Berman to conduct a master class at the University's Beall Concert Hall. The master class is the only one he will conduct on this tour and the first one he has ever taught in the United States.

It wasn't difficult to get Berman to accept the invitation, Dobroski said.

"Often the more distinguished the artist, the more willing they are to work with young artists," Dobroski said.

A master class is a public lesson in which a student, usually already an accomplished musician, performs for the master and then is critiqued, Dobroski explained. He noted that a master class can take several forms. The master may critique the musician's interpretation of a whole piece or he may work with the musician to perfect specific phrases or sections of the piece.

The students chosen for the master class with Berman — John Maddy, Meijane Quong, Brett Anderson and Robert King — are all doctoral candidates in piano performance studying at the

University.

"I was first introduced to his music by a recording of his work. I never dreamed that I would be studying with him just a few years later," King said. "He is world class."

Berman's instruction "was very deliberate and very distinct," Quong said.

Berman listened patiently as Quong played a selection of Alexander Scriabin's "Piano Concerto in F-sharp Minor, Opus 20." Then he went to work politely and jovially dissecting Quong's technique, demonstrating how he would have her play the piece.

"It was frustrating having to talk through an interpreter, but the interpreter was marvelous. You could see all these things coming out on his face, but you had to wait for the interpreter," she said.

"He does not overemphasize details, but the integration of details — he emphasizes integration of the emotional and intellectual aspects of the piece. This makes the piece merge into one concept," Anderson said.

SWRC Continued from Page 1A

ween the knowledge industry of the University and an applied use of that knowledge.

And Gleason assured legislators that city officials understand the responsibility they were given when the governor said he supported the research park, not to benefit the Eugene metro area, but to benefit all of the southern Willamette Valley.

Besides faculty salaries and research park support, the neglected Centers of Excellence are an important investment the Legislature should complete this session, Moseley said. The

Legislature appropriated \$1.5 million in lottery funds in 1985 to start Centers of Excellence in the University's material science and bio-technology departments.

Moseley said five new faculty members were hired to work in the Centers of Excellence in 1985. "The first five people we hired under the Centers of Excellence program received the Presidential Young Investigator Award," Moseley said. With the PYIA, "they were all designated as among the very elite in their areas of research," he said.

NEED CONTACT LENSES?

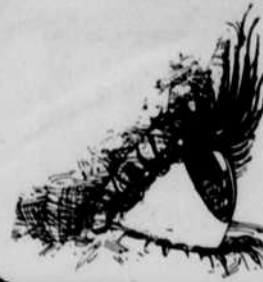
Then come in for a
FREE
consultation and screening

WOODY LINN F.C.L.S.A.
Certified Contact Lense Specialists
Since 1973

THE OPTICAL SHOPPE

On the Corner of
14th and Pearl

Call 687-2522



Pianist

Continued from Page 1A

Roan, along with Bernard Dobroski, dean of the University music school, also managed to get Berman to conduct a master class at the University's Beall Concert Hall. The master class is the only one he will conduct on this tour and the first one he has ever taught in the United States.

It wasn't difficult to get Berman to accept the invitation, Dobroski said.

"Often the more distinguished the artist, the more willing they are to work with young artists," Dobroski said.

A master class is a public lesson in which a student, usually already an accomplished musician, performs for the master and then is critiqued, Dobroski explained. He noted that a master class can take several forms. The master may critique the musician's interpretation of a whole piece or he may work with the musician to perfect specific phrases or sections of the piece.

The students chosen for the master class with Berman — John Maddy, Meijane Quong, Brett Anderson and Robert King — are all doctoral candidates in piano performance studying at the

University.

"I was first introduced to his music by a recording of his work. I never dreamed that I would be studying with him just a few years later," King said. "He is world class."

Berman's instruction "was very deliberate and very distinct," Quong said.

Berman listened patiently as Quong played a selection of Alexander Scriabin's "Piano Concerto in F-sharp Minor, Opus 20." Then he went to work politely and jovially dissecting Quong's technique, demonstrating how he would have her play the piece.

"It was frustrating having to talk through an interpreter, but the interpreter was marvelous. You could see all these things coming out on his face, but you had to wait for the interpreter," she said.

"He does not overemphasize details, but the integration of details — he emphasizes integration of the emotional and intellectual aspects of the piece. This makes the piece merge into one concept," Anderson said.

SWRC

Continued from Page 1A

ween the knowledge industry of the University and an applied use of that knowledge.

And Gleason assured legislators that city officials understand the responsibility they were given when the governor said he supported the research park, not to benefit the Eugene metro area, but to benefit all of the southern Willamette Valley.

Besides faculty salaries and research park support, the neglected Centers of Excellence are an important investment the Legislature should complete this session, Moseley said. The

Legislature appropriated \$1.5 million in lottery funds in 1985 to start Centers of Excellence in the University's material science and bio-technology departments.

Moseley said five new faculty members were hired to work in the Centers of Excellence in 1985. "The first five people we hired under the Centers of Excellence program received the Presidential Young Investigator Award," Moseley said. With the PYIA, "they were all designated as among the very elite in their areas of research," he said.

NEED CONTACT LENSES?

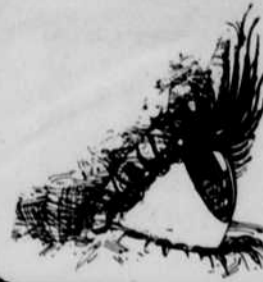
Then come in for a
FREE
consultation and screening

WOODY LINN F.C.L.S.A.
Certified Contact Lense Specialists
Since 1973

THE OPTICAL SHOPPE

On the Corner of
14th and Pearl

Call 687-2522



Pianist

Continued from Page 1A

Roan, along with Bernard Dobroski, dean of the University music school, also managed to get Berman to conduct a master class at the University's Beall Concert Hall. The master class is the only one he will conduct on this tour and the first one he has ever taught in the United States.

It wasn't difficult to get Berman to accept the invitation, Dobroski said.

"Often the more distinguished the artist, the more willing they are to work with young artists," Dobroski said.

A master class is a public lesson in which a student, usually already an accomplished musician, performs for the master and then is critiqued, Dobroski explained. He noted that a master class can take several forms. The master may critique the musician's interpretation of a whole piece or he may work with the musician to perfect specific phrases or sections of the piece.

The students chosen for the master class with Berman — John Maddy, Meijane Quong, Brett Anderson and Robert King — are all doctoral candidates in piano performance studying at the

University.

"I was first introduced to his music by a recording of his work. I never dreamed that I would be studying with him just a few years later," King said. "He is world class."

Berman's instruction "was very deliberate and very distinct," Quong said.

Berman listened patiently as Quong played a selection of Alexander Scriabin's "Piano Concerto in F-sharp Minor, Opus 20." Then he went to work politely and jovially dissecting Quong's technique, demonstrating how he would have her play the piece.

"It was frustrating having to talk through an interpreter, but the interpreter was marvelous. You could see all these things coming out on his face, but you had to wait for the interpreter," she said.

"He does not overemphasize details, but the integration of details — he emphasizes integration of the emotional and intellectual aspects of the piece. This makes the piece merge into one concept," Anderson said.

SWRC

Continued from Page 1A

ween the knowledge industry of the University and an applied use of that knowledge.

And Gleason assured legislators that city officials understand the responsibility they were given when the governor said he supported the research park, not to benefit the Eugene metro area, but to benefit all of the southern Willamette Valley.

Besides faculty salaries and research park support, the neglected Centers of Excellence are an important investment the Legislature should complete this session, Moseley said. The

Legislature appropriated \$1.5 million in lottery funds in 1985 to start Centers of Excellence in the University's material science and bio-technology departments.

Moseley said five new faculty members were hired to work in the Centers of Excellence in 1985. "The first five people we hired under the Centers of Excellence program received the Presidential Young Investigator Award," Moseley said. With the PYIA, "they were all designated as among the very elite in their areas of research," he said.

NEED CONTACT LENSES?

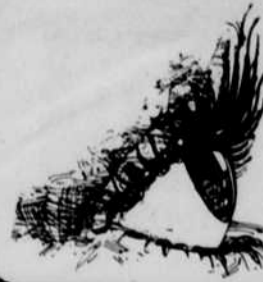
Then come in for a
FREE
consultation and screening

WOODY LINN F.C.L.S.A.
Certified Contact Lense Specialists
Since 1973

THE OPTICAL SHOPPE

On the Corner of
14th and Pearl

Call 687-2522



Pianist

Continued from Page 1A

Roan, along with Bernard Dobroski, dean of the University music school, also managed to get Berman to conduct a master class at the University's Beall Concert Hall. The master class is the only one he will conduct on this tour and the first one he has ever taught in the United States.

It wasn't difficult to get Berman to accept the invitation, Dobroski said.

"Often the more distinguished the artist, the more willing they are to work with young artists," Dobroski said.

A master class is a public lesson in which a student, usually already an accomplished musician, performs for the master and then is critiqued, Dobroski explained. He noted that a master class can take several forms. The master may critique the musician's interpretation of a whole piece or he may work with the musician to perfect specific phrases or sections of the piece.

The students chosen for the master class with Berman — John Maddy, Meijane Quong, Brett Anderson and Robert King — are all doctoral candidates in piano performance studying at the

University.

"I was first introduced to his music by a recording of his work. I never dreamed that I would be studying with him just a few years later," King said. "He is world class."

Berman's instruction "was very deliberate and very distinct," Quong said.

Berman listened patiently as Quong played a selection of Alexander Scriabin's "Piano Concerto in F-sharp Minor, Opus 20." Then he went to work politely and jovially dissecting Quong's technique, demonstrating how he would have her play the piece.

"It was frustrating having to talk through an interpreter, but the interpreter was marvelous. You could see all these things coming out on his face, but you had to wait for the interpreter," she said.

"He does not overemphasize details, but the integration of details — he emphasizes integration of the emotional and intellectual aspects of the piece. This makes the piece merge into one concept," Anderson said.

SWRC

Continued from Page 1A

ween the knowledge industry of the University and an applied use of that knowledge.

And Gleason assured legislators that city officials understand the responsibility they were given when the governor said he supported the research park, not to benefit the Eugene metro area, but to benefit all of the southern Willamette Valley.

Besides faculty salaries and research park support, the neglected Centers of Excellence are an important investment the Legislature should complete this session, Moseley said. The

Legislature appropriated \$1.5 million in lottery funds in 1985 to start Centers of Excellence in the University's material science and bio-technology departments.

Moseley said five new faculty members were hired to work in the Centers of Excellence in 1985. "The first five people we hired under the Centers of Excellence program received the Presidential Young Investigator Award," Moseley said. With the PYIA, "they were all designated as among the very elite in their areas of research," he said.

NEED CONTACT LENSES?

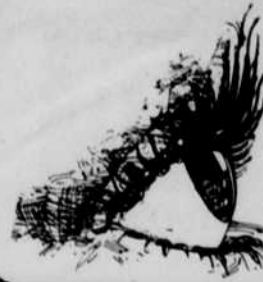
Then come in for a
FREE
consultation and screening

WOODY LINN F.C.L.S.A.
Certified Contact Lense Specialists
Since 1973

THE OPTICAL SHOPPE

On the Corner of
14th and Pearl

Call 687-2522



Pianist

Continued from Page 1A

Roan, along with Bernard Dobroski, dean of the University music school, also managed to get Berman to conduct a master class at the University's Beall Concert Hall. The master class is the only one he will conduct on this tour and the first one he has ever taught in the United States.

It wasn't difficult to get Berman to accept the invitation, Dobroski said.

"Often the more distinguished the artist, the more willing they are to work with young artists," Dobroski said.

A master class is a public lesson in which a student, usually already an accomplished musician, performs for the master and then is critiqued, Dobroski explained. He noted that a master class can take several forms. The master may critique the musician's interpretation of a whole piece or he may work with the musician to perfect specific phrases or sections of the piece.

The students chosen for the master class with Berman — John Maddy, Meijane Quong, Brett Anderson and Robert King — are all doctoral candidates in piano performance studying at the

University.

"I was first introduced to his music by a recording of his work. I never dreamed that I would be studying with him just a few years later," King said. "He is world class."

Berman's instruction "was very deliberate and very distinct," Quong said.

Berman listened patiently as Quong played a selection of Alexander Scriabin's "Piano Concerto in F-sharp Minor, Opus 20." Then he went to work politely and jovially dissecting Quong's technique, demonstrating how he would have her play the piece.

"It was frustrating having to talk through an interpreter, but the interpreter was marvelous. You could see all these things coming out on his face, but you had to wait for the interpreter," she said.

"He does not overemphasize details, but the integration of details — he emphasizes integration of the emotional and intellectual aspects of the piece. This makes the piece merge into one concept," Anderson said.

SWRC

Continued from Page 1A

ween the knowledge industry of the University and an applied use of that knowledge.

And Gleason assured legislators that city officials understand the responsibility they were given when the governor said he supported the research park, not to benefit the Eugene metro area, but to benefit all of the southern Willamette Valley.

Besides faculty salaries and research park support, the neglected Centers of Excellence are an important investment the Legislature should complete this session, Moseley said. The

Legislature appropriated \$1.5 million in lottery funds in 1985 to start Centers of Excellence in the University's material science and bio-technology departments.

Moseley said five new faculty members were hired to work in the Centers of Excellence in 1985. "The first five people we hired under the Centers of Excellence program received the Presidential Young Investigator Award," Moseley said. With the PYIA, "they were all designated as among the very elite in their areas of research," he said.

NEED CONTACT LENSES?

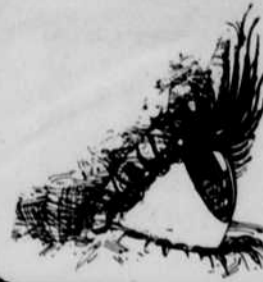
Then come in for a
FREE
consultation and screening

WOODY LINN F.C.L.S.A.
Certified Contact Lense Specialists
Since 1973

THE OPTICAL SHOPPE

On the Corner of
14th and Pearl

Call 687-2522



Pianist

Continued from Page 1A

Roan, along with Bernard Dobroski, dean of the University music school, also managed to get Berman to conduct a master class at the University's Beall Concert Hall. The master class is the only one he will conduct on this tour and the first one he has ever taught in the United States.

It wasn't difficult to get Berman to accept the invitation, Dobroski said.

"Often the more distinguished the artist, the more willing they are to work with young artists," Dobroski said.

A master class is a public lesson in which a student, usually already an accomplished musician, performs for the master and then is critiqued, Dobroski explained. He noted that a master class can take several forms. The master may critique the musician's interpretation of a whole piece or he may work with the musician to perfect specific phrases or sections of the piece.

The students chosen for the master class with Berman — John Maddy, Meijane Quong, Brett Anderson and Robert King — are all doctoral candidates in piano performance studying at the

University.

"I was first introduced to his music by a recording of his work. I never dreamed that I would be studying with him just a few years later," King said. "He is world class."

Berman's instruction "was very deliberate and very distinct," Quong said.

Berman listened patiently as Quong played a selection of Alexander Scriabin's "Piano Concerto in F-sharp Minor, Opus 20." Then he went to work politely and jovially dissecting Quong's technique, demonstrating how he would have her play the piece.

"It was frustrating having to talk through an interpreter, but the interpreter was marvelous. You could see all these things coming out on his face, but you had to wait for the interpreter," she said.

"He does not overemphasize details, but the integration of details — he emphasizes integration of the emotional and intellectual aspects of the piece. This makes the piece merge into one concept," Anderson said.

SWRC

Continued from Page 1A

ween the knowledge industry of the University and an applied use of that knowledge.

And Gleason assured legislators that city officials understand the responsibility they were given when the governor said he supported the research park, not to benefit the Eugene metro area, but to benefit all of the southern Willamette Valley.

Besides faculty salaries and research park support, the neglected Centers of Excellence are an important investment the Legislature should complete this session, Moseley said. The

Legislature appropriated \$1.5 million in lottery funds in 1985 to start Centers of Excellence in the University's material science and bio-technology departments.

Moseley said five new faculty members were hired to work in the Centers of Excellence in 1985. "The first five people we hired under the Centers of Excellence program received the Presidential Young Investigator Award," Moseley said. With the PYIA, "they were all designated as among the very elite in their areas of research," he said.

NEED CONTACT LENSES?

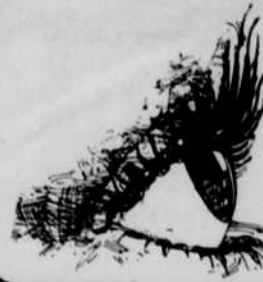
Then come in for a
FREE
consultation and screening

WOODY LINN F.C.L.S.A.
Certified Contact Lense Specialists
Since 1973

THE OPTICAL SHOPPE

On the Corner of
14th and Pearl

Call 687-2522



Pianist

Continued from Page 1A

Roan, along with Bernard Dobroski, dean of the University music school, also managed to get Berman to conduct a master class at the University's Beall Concert Hall. The master class is the only one he will conduct on this tour and the first one he has ever taught in the United States.

It wasn't difficult to get Berman to accept the invitation, Dobroski said.

"Often the more distinguished the artist, the more willing they are to work with young artists," Dobroski said.

A master class is a public lesson in which a student, usually already an accomplished musician, performs for the master and then is critiqued, Dobroski explained. He noted that a master class can take several forms. The master may critique the musician's interpretation of a whole piece or he may work with the musician to perfect specific phrases or sections of the piece.

The students chosen for the master class with Berman — John Maddy, Meijane Quong, Brett Anderson and Robert King — are all doctoral candidates in piano performance studying at the

University.

"I was first introduced to his music by a recording of his work. I never dreamed that I would be studying with him just a few years later," King said. "He is world class."

Berman's instruction "was very deliberate and very distinct," Quong said.

Berman listened patiently as Quong played a selection of Alexander Scriabin's "Piano Concerto in F-sharp Minor, Opus 20." Then he went to work politely and jovially dissecting Quong's technique, demonstrating how he would have her play the piece.

"It was frustrating having to talk through an interpreter, but the interpreter was marvelous. You could see all these things coming out on his face, but you had to wait for the interpreter," she said.

"He does not overemphasize details, but the integration of details — he emphasizes integration of the emotional and intellectual aspects of the piece. This makes the piece merge into one concept," Anderson said.

SWRC

Continued from Page 1A

ween the knowledge industry of the University and an applied use of that knowledge.

And Gleason assured legislators that city officials understand the responsibility they were given when the governor said he supported the research park, not to benefit the Eugene metro area, but to benefit all of the southern Willamette Valley.

Besides faculty salaries and research park support, the neglected Centers of Excellence are an important investment the Legislature should complete this session, Moseley said. The

Legislature appropriated \$1.5 million in lottery funds in 1985 to start