

Oregon Daily Emerald

Stroke! Stroke!
See Sidelines

Wednesday, May 21, 1986

Eugene, Oregon

Volume 87, Number 157

Paulus, Goldschmidt easily win nominations

By Chris Norred
and Mike Rivers

Of the Emerald

There were no surprises in the state gubernatorial primaries Tuesday as Democrat Neil Goldschmidt and Republican Norma Paulus coasted han-

dily to their parties' nominations.

With most of the states precincts in, Goldschmidt received 68 percent of the Democratic voters' support statewide. His main competitor for the nomination was state Sen. Ed Fadeley, D-Eugene, who received 25 percent.

Goldschmidt and Paulus will begin planning for the heated contest to come in the gubernatorial general election in November. A series of six debates between Paulus and Goldschmidt is expected to be held around the state in the months to come. During the primary campaign, both candidates mentioned a desire to debate.

In races for national offices, as predicted, incumbent U.S. Sen. Bob Packwood, R-Ore., defeated challenger Joe Lutz in the Republican senatorial primary with 58 percent of the Republican vote. However, Lutz received a surprising 42 percent and actually beat Packwood in nine of Oregon's 36 counties.

Pre-election polls consistently showed Lutz trailing Packwood substantially. Packwood's pre-election, anti-Lutz, campaign ads were credited with some responsibility for Lutz's late gain in support. Election experts speculated that the mention of Lutz in Packwood's ads increased Lutz's name recognition.

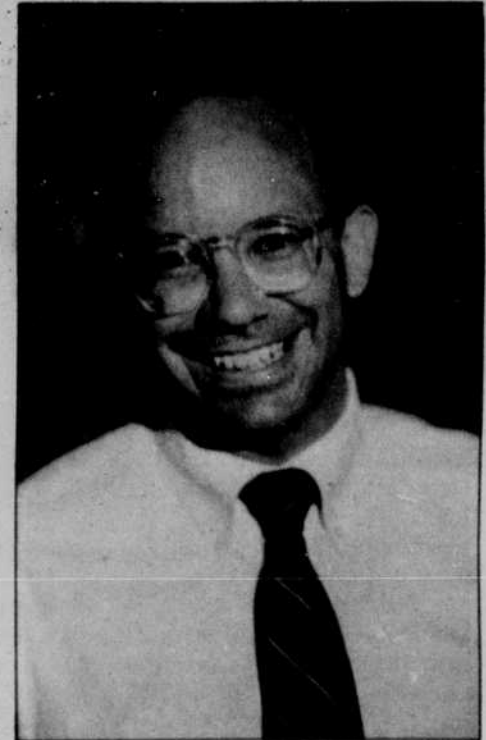
Jim Weaver, D-Eugene, won his party's nomination to campaign against Packwood for the U.S. Senate seat. Weaver carried nearly 64 percent of the vote.

In the highly anticipated District 4 U.S. House race, Lane County Commissioner Peter DeFazio squeaked by with a slim margin over state Sen. Bill Bradbury, D-Bandon.

DeFazio opened a commanding lead early with the results from Lane County precincts, but late results from Coos, Curry and Douglas counties boosted Bradbury back into the race. However, with most of the votes in from counties other than Lane, it appeared that DeFazio would be able to withstand Bradbury's onslaught.

Margie Hendriksen, the third Democratic candidate in the District 4 race, trailed Bradbury by a small percentage.

On the Republican side, Douglas



Peter DeFazio

County Commissioner Bruce Long defeated state Rep. Mary Burrows, R-Eugene. With 162 of the 181 precincts tallied, Long carried 46 percent to Burrows' 43 percent.

Long said he will concentrate on issues aimed at economic growth during the general election campaign.

Long said he and DeFazio, as county commissioners, will be sensitive to local issues.

"Economics is the key issue in the 4th District race," Long said.

DeFazio, speaking at his victory celebration in downtown Eugene, said the Republican National Committee chairman had approached him and told him the Republicans would be putting lots of money into Long's campaign to

Continued on Page 3A

Election at a glance

Percentages for contested races, most precincts in

Yes	State Measure 1	79	Bob Klutigh	48
No		17	Elaine Benson	23
			George Abbott	7
Yes	State Measure 2	51	Scott Carpenter	48
No		31	Shirley Whitehead	26
			20th District	
Yes	State Measure 3	68	Jack Roberts	58
No		18	Brian Lewis	17
			21st District	
Yes	State Measure 4	58	Larry Hill	73
No		40	Steven Richkind	18
			21st District	
Yes	State Measure 5	38		
No		54		
			State Representative	
			Republican	
Governor	Republican	77	Don Butsch	66
Norma Paulus		13	Frank van de Bogaard	17
Betty Frost			48th District	
	Democrat	68	Richard Lee	42
Neil Goldschmidt		25	Paula Walsh	34
Ed Fadeley			Democrat	
			4th District	
U.S. Senator	Republican	58	Max Rijnen	55
Bob Packwood		42	Bill Harder	37
Joe Lutz			48th District	
	Democrat	63	Carl Hesticks	60
Jim Weaver		15	Ernie Callison	29
Rod Monroe		14	David Dix	42
Rick Bauman		9	Chuck Fadeley	39
Steve Anderson			Steve Aday	8
			41st District	
U.S. Representative	Republican	56	Wm. J. Dwyer	53
Bruce Long		38	Tom Marsden	21
Mary Burrows		6	Fred Simmons	13
James Peterson			Court of Appeals Judge	
	Democrat	34	Mary Delta	58
Peter DeFazio		31	Charles Erwin	23
Margie Hendriksen		33		
Bill Bradbury			Lane County District Court Judge	
			Department 5	
State Senator	Republican		My Leonard	46
	10th District		Frank Papagal	38

Board changes mind; GTFs keep exemption

By Sarah Kitchen
Of the Emerald

The Oregon State Board of Higher Education Tuesday reversed its decision to withhold a tuition waiver tax from graduate teaching fellows' paychecks, said Barbara Mossberg, acting dean of the Graduate School.

"The board is not going to withhold taxes for May or June, and the money that has been withheld will be returned," Mossberg said.

Joe Sicotte, associate vice chancellor of the Oregon State System of Higher Education, said Vice Chancellor Bill Lemman and staff members worked on the issue over the weekend and found nothing that would hinder reversing the decision.

He said all of those affected will receive a refund for the deductions from their April paychecks by June 16.

"I don't know for sure how the new decision will affect fall

term, but I believe that the indications of the House of Representatives and the U.S. Senate show that we will not have to withhold retroactive to January 31, 1986," Sicotte said.

Chuck Hunt, president of the Graduate Teaching Fellows Federation union local said his first reaction to the news of the reversal was "absolute joy."

"The stupidity of the other decision finally pulled it down and put a stop to it," Hunt said.

"I wish the original decision had never been made in the first place, and at least right now we are back to square one," he added.

Scott Kerlin, of the GTF union, said he was discouraged with the situation until he heard about the reversal.

"People were getting angry, eviction notices were being served to some GTFs, and I was talking to some people who

Continued on Page 3A

Black fraternity originated to provide support system

By Janean Chun
Of the Emerald

Editor's Note: This is the second article in a two-part series about Kappa Alpha Psi, a black fraternity currently being organized on campus.

Despite the four-year Civil War battle from 1861-65, blacks still lived in a racist society when the first black fraternity was founded in 1911.

Ten black men enrolled at Indiana University in Bloomington were almost completely ignored by both white students and the administration.

The men were denied participation in contact sports, and were only allowed to join track and field events. They also were denied use of entertainment and recreational facilities.

At that time, blacks also were refused entrance into the white fraternities — unless they entered as waiters, cooks, janitors or chauffeurs.

Yet the black men, led by Byron Armstrong and Elder Watson Diggs, decided that the solidified friendships that can form in a

fraternity would help to alleviate some of the isolation they were forced to live with every day.

On May 15, 1911, Kappa Alpha Nu, one of the first black fraternities, was incorporated as a national fraternity. Kappa Alpha Nu is now known as Kappa Alpha Psi, and claims famous alumni including Mayor Tom Bradley of Los Angeles, basketball greats Bill Russell and Wilt Chamberlain, and singing star Johnny Mathis.

Kappa Alpha Psi was first introduced to the University in February 1981. Anthony Austin, one of the original six members, says the Kappas' objective was "to form a support group with a high sense of priority on academic achievement."

The Kappas were involved in numerous community activities such as the Big Brother/Big Sister Program and drug awareness programs. As far as social life went, the Kappas involved themselves exclusively with the predominantly black sorority, Alpha Kappa Alpha, and avoided interaction with

Continued on Page 3A