



Photo courtesy of Jana Meyers

More than 'Animal House'

The white Victorian structure at 751 E. 15th Ave., which was torn down Thursday, had a history predating John Belushi and "National Lampoon's Animal House" — by about 74 years.

Eugene pioneer, doctor and

four bedrooms, a parlor, and a "music room," where family and friends would gather for a singsong or a quiet medley of tunes from the piano. The elegant fireplace cheered many family evenings before it was removed in the late 1950s.

Patterson performed a great deal of his "doctoring" in both houses, and descendants say the exposure to communicable diseases such as smallpox possibly caused the deaths of three of the eight Patterson children. Despite failing eyesight, Patterson continued to receive patients in his home until he died in 1904 at the age of 90.

Patterson's daughter, Harriet, was the last member of the family to live in the house. She lived there until she died in March 1956.

Dr. Patterson's grandson inherited the house and property and sold them soon thereafter. During the following years, the Patterson house was used as a fraternity house, a rooming house and a state "halfway

house" for recently released prison inmates.

In October 1977, Universal Studios set up shop, and the old Patterson house became the home of the Faber College chapter of Delta Tau Chi "Animal House."



Photo courtesy of Jana Meyers

Photos clockwise from the top: The A.W. Patterson house in 1956; a portrait of Andrew Patterson, who built the house in 1903; a remnant from the house's days as the Phi Sigma Kappa fraternity from 1959 to 1967.



surveyor Andrew Patterson built the house in 1903. The house was the second to stand on the site, which Patterson and his wife Amanda purchased in the early 1870s.

The Patterson house had



German

AUTO SERVICE

VW'S MERCEDES BMW'S
DATSUN TOYOTA

Reliable service for your
foreign car since 1963

342-2912

2025 Franklin Blvd.
Eugene, Ore 97403

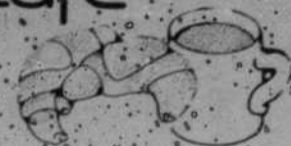
emu Food Service

**Breakfast is the
Most Important Meal
of the Day**

7-10:30 Mon-Fri

fountain
court cafe

Cereals, Fresh Fruits, Melons,
Bagels, Coffee, Tea, Cocoa,
Ham 'n' Eggs, Pastries, Juices,
Beverages & Pancakes



TRY OUR SPECIAL CROISSANT BREAKFAST
AND OUR HUEVOS RANCHEROS OLE!



PIZZA
PETE'S
ITALIAN KITCHEN

Compare Quality
Compare Price!

DELIVERY!

GOOD THRU
1-20-86

(limited area)

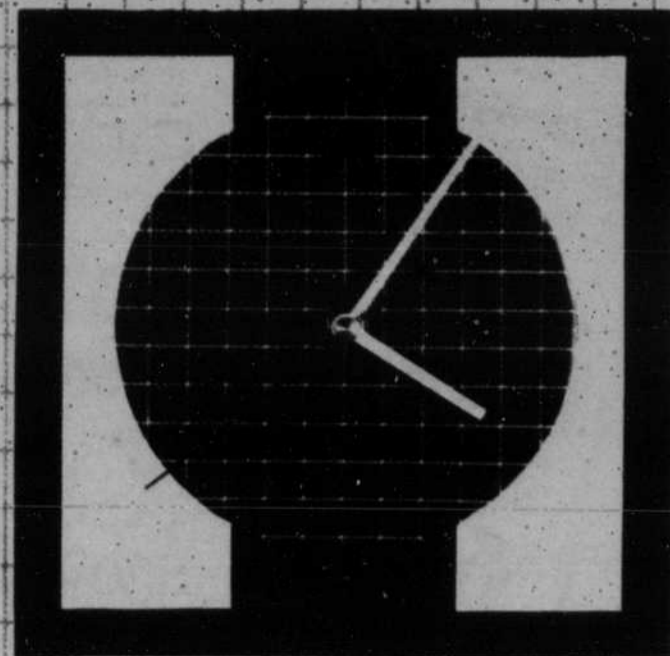
\$1.00 off

DELIVERED
PIZZA

484-0996 * 2673 WILLAMETTE

UO Bookstore

IT'S ABOUT TIME...



GRAPHIC WALL CLOCKS

Made of beautiful "Wet Look" gloss vinyl with color-coordinated Minute, Hour, and Second Hands, these 9" wide, Hand Screened Geometric Graphic Clocks are now offered at a new low price.

Reg. \$15.00 Now **\$10.75**

Your store since 1920

UO
BOOKSTORE

13th & Kincaid
M-F 7:30-5:30
SAT 10:00-3:00
Supplies 888-4331

COMPARE BERG'S!

We'll match or beat any price in town
for quality name-brand ski gear!

SPECIAL OF THE WEEK

BARRECRAFTERS Locking Ski Racks

Regular \$70 Your Choice \$54.95

SKI BOOTS:

Salomon SX 50, reg. \$175.....	\$79.95
Salomon SX 90, reg. \$275.....	\$150
Lange ZR, reg. \$280.....	\$150
Munari Atlas, reg. \$110.....	\$50

SKI PACKAGES:

Cross Country Packages.....now from **\$69.95**

Atomic Downhill Package

including AL7 skis, Look 39 bindings
mounting & hot wax, reg. \$296 **\$124.95**



Berg's Ski Shop

13th & Lawrence
683-1300

Open Mon - Thurs. 10 - 6
Fri & Sat 10 - 9