

# Grapplers fall to Beavers

By Tony Ahern  
Of the Emerald

McArthur Court was the site of two Civil War battles this weekend.

One night before the basketball shootout, the Oregon and Oregon State wrestling squads faced off. And, like most of the winter-time Civil War battles, the north prevailed, 21-14.

Chico State also was on hand to make this a double-dual meet. The Wildcats, however, have never beaten the Ducks or Beavers and could only provide sideshows to the green and black matches.

With the yellow Beaver-buster t-shirts and the black Duck-haters worn by some of the wrestlers, this contest definitely had the Civil War flavor.

The coaches were not unlike Saturday's hoop mentors: Oregon's Ron Finley with his occasional Don Monson-like ravings; and OSU's Dale Thomas, in his 30th year, with his gray-haired coolness in the Beaver's corner, ala Ralph Miller.

Yet, after all the psych-jobs, the 19th-ranked Beavers had their eighth straight dual victory over the Ducks.

The first Oregon-OSU match was at 158 pounds on the south mat. The Ducks' Vince Hochanadel tangled with Jeff Cardwell.

Cardwell, one of two brothers from the nearby logging town of Lowell on the Beaver's roster, showed why he's ranked 17th nationally in his weight class. He easily handled Hochanadel, 8-0.

Oregon's Dan Martin, a junior from Sandy, gave Marvin Seal a tough time at 167 before falling to the Salem native, 4-2.

If there was a feature match of the night it was at 177. Oregon's Mike Harter, ranked 11th in the country, took on OSU's Pat Gibson, ranked 16th.

Gibson, a senior from Phoenix, Ore., managed to get an early 5-1 lead on two takedowns and an escape, then held on to post a 7-4 victory.

The loss snapped Harter's winning streak at eight matches.

It didn't stop Oregon's hopes for an upset however.

James Terry was able to claim a six-point injury default win after OSU's Tim Mondale, another Phoenix product, went down with a shoulder injury in the first period.

That set the stage for one of Oregon's strongest efforts of the night — that of Joe Rissone at heavyweight.

Giving up more than 20 pounds to Beaver freshman John Bielenburg, Rissone resorted to superior quickness to come away the winner, 9-6.

With the Beavers holding a slim 10-9 lead, the north mat became the focal point as the lighter members of the two Oregon schools prepared to scrap.

Quickly, Robert Pelayo gave Oregon its first team lead over OSU by edging Tim Glennie, 3-2, at 118.

At 126, Oregon's most productive freshman, Shon Lewis, found himself pitted against a cagey senior, Rodney Hawthorne, ranked 16th nationally.

Lewis' speed couldn't contend with Hawthorne's savvy. The Beaver from LaGrande pulled away in the final period, winning 10-3.

The Ducks desperately needed a win from their solid 134-pounder, Glenn Jarrett, but OSU's Ron Arnold came through with the better third period to top a 10-7 score, clinching the dual victory for the Beavers.

At 142, another Duck freshman, Tim Ige, struggled to a 2-2 draw against Tim Brown. Neither wrestler dominated enough for the one-point riding time so both teams had to settle for two-points.

Ige's points were the last Oregon would get against the Beavers.

In the evening's final match, Duck freshman George Johnston faced the eldest of Lowell's Caldwell brothers, Scott, at 150, and went down 6-1.

Finley was pleased with his team's effort against OSU though, especially after being crushed by Fresno State, 29-9, Thursday night.

"We were in it all the way," Finley said. "Hopefully, next time we can make it even closer."

Neither Pac-10 school had much trouble with Chico State. The Ducks, who won 21-14, are now 6-0 against the Wildcats. The Beavers won their 11th straight over CSU in major fashion, 41-3.

Oregon is still without their standout sophomore Sean Braddock at 134. Braddock, who missed most of the last two seasons with back problems, broke his collarbone during the Oregon Invitational on Dec. 22. He hopes to be ready in time for the conference championships.

The Ducks travel to Washington State for their next meet, Saturday, Jan. 18.

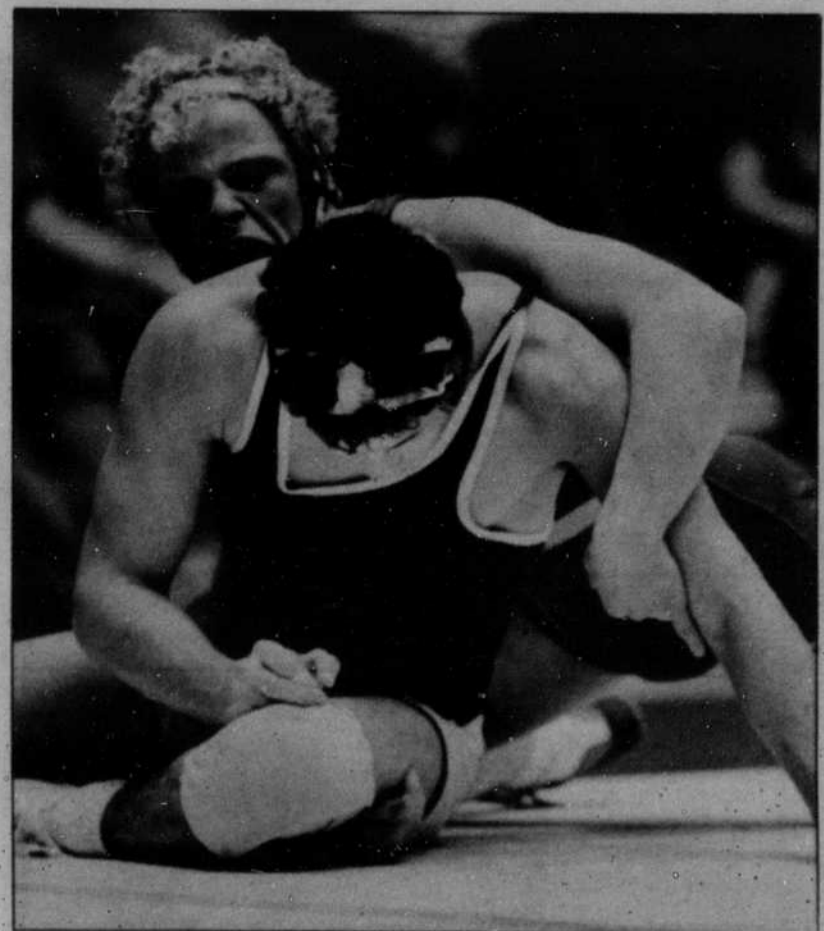


Photo by Ross Martin  
Oregon freshman George Johnston has control of Oregon State's Scott Cardwell at this point, but his bid for an upset fell short.

AMERICAN FAMILY  
**evideo**

VIDEO MOVIES      1 HOUR PHOTO      TV-VCR-STEREO

**MASK**  
CHER, SAM ELLIOTT, ERIC STOLTZ

**NEW ON VIDEO**

- D.A.R.Y.L.
- Lifeforce
- Explorers
- Pale Rider
- American Ninja
- Heavenly Kid
- Def-Con 4
- View To A Kill
- Fletch
- Ghostbusters
- Code Of Silence
- Beverly Hills Cop
- Brewster's Millions
- Emerald Forest

**MOVIES FROM 99¢**  
**\$1.99 MOVIES with MOVIE PASS.**

**COUPON**  
**VIDEO PLAYER + 4 MOVIES for 2 days \$14.95**

Sat-Mon, Sun-Tue, Mon-Wed, Tues-Thurs, Wed-Fri  
Expires 1/17/86

**DEVELOPED & PRINTED IN ONE HOUR!**

**Twice as nice!**

**DOUBLE PRINTS SPECIAL 15¢ each**

**COUPON**

110/126 - 12 Exp. <b>\$1.95 ONLY</b>	135-12 Exposures <b>\$2.95</b>
110/126/135 24 Exposures <b>\$4.95</b>	135-36 Exposures <b>\$7.95</b>

**AMERICAN FAMILY VIDEO**

EUGENE NORTH 1600-3 Coburg Road 683-1477  
SANTA CLARA Fred Meyer Shop Ctr. 688-1165

No Limit • Expires 1/31/86

**RENTAL & SALES**

100% warranty through contract

**\$1.00 per day is all you pay**  
From **\$29.95 per month**  
**30% discount for cash**

- No Credit Needed
- No Deposit Required

**FLY TO THE STARS**  
ENTER TO WIN

Contest ends January 31, 1986

**FREE:** One of 2 round-trip tickets for 2 to Hollywood  
**FREE:** 1 Week accommodations for 2 at SPACE AGE LODGE (Anaheim)  
**FREE:** Passes to Universal Studios and much more

**STOVALL MOTOR HOTELS**

<b>EUGENE NORTH</b> 1600-3 Coburg Rd. 683-1477 9 a.m. to 11 p.m.	<b>EUGENE SOUTH</b> 2570 Willamette 458-4608 9 a.m. to 11 p.m.	<b>SANTA CLARA</b> Fred Meyer Shop Ctr. 688-1165 9 a.m. to 11 p.m.	<b>EUGENE</b> (TV-VCR-STEREO) Sheldon Plaza 683-4161	<b>ALBANY</b> 926-0012 <b>LEBANON</b> 451-1683 <b>CORVALLIS</b> 752-7001	<b>SWEET HOME</b> 367-8493 <b>KEIZER</b> 390-6257 <b>N.E. SALEM</b> 362-9663	<b>S.E. SALEM</b> 581-5491 <b>SO. COMMER.</b> 362-7499 <b>SO. LIBERTY</b> 588-0660
---------------------------------------------------------------------------	-------------------------------------------------------------------------	-----------------------------------------------------------------------------	---------------------------------------------------------------	-----------------------------------------------------------------------------------------	---------------------------------------------------------------------------------------------	---------------------------------------------------------------------------------------------------