



Excursion Fare returns to campus

Award-winning playwright Dennis Smith brings his most recent success, "Excursion Fare," back to the University — this time to Robinson Theatre. The comic-drama, which is centered around the an unusual group of travelers stranded at a railway station, held its world premiere in early April at the Arena Theatre.

Pictured are Mikel MacDonald, who plays Joe; Kimberly Anderson, as A.E.; and Debra Dreiling, as Lily. The play is directed by Peter Davis. "Excursion Fare plays at 8 p.m. tonight and Saturday, and Oct. 25, 26 and 27. All seats are reserved; single tickets are \$5 for the general public, \$4 for senior citizens and students, and \$3.25 for University students. Call 686-4191 for more information.

Photo by Steven Wall

Craftiness is key to winning JVC prize

Creative-minded students and professionals have a chance to display their craftiness and technical efficiency in video production, in the JVC 1984 Professional Video Competition.

A "future professionals" classification has been added in this fifth annual JVC contest. Now University students are invited to compete in the fields of teleproduction, mass communication, journalism and film.

Awards in four categories — communications, training, promotion/merchandising and local cable production — will go to the top three qualifiers in both the professional and future professional divisions. Professionals will win up to \$5,000 of their choice of JVC video equipment,

while student winners will earn tuition scholarships valued at up to \$2,000.

Judging is weighted 65 percent on creativity in achieving stated objectives; with editing, direction, writing, creative strategy, special effects and music selection under evaluation in this area. The other 35 percent of the contest is based on technical proficiency, which includes videography, lighting, audio, design and talent.

Official rules and entry forms are available by writing: 1984 Professional Video Competition, c/o Shaw and Todd, Inc., 6101 Empire State Building, New York, N.Y., 10118, or by calling the Professional Video Competition hotline, 212-244-5225.

Jo Federigo's

CAFE AND BAR



Featuring
Continental Cuisine With
An Italian Accent

Live Jazz
Seven Nights A Week

Daily Lunch special \$4.25
Nightly Dinner Special
\$9.95

Across From The 5th St. Public Market

259 East 5th Avenue • Eugene, Oregon • 343-8488

Lone ★ Star

160 S. Park • 484-7458

Double Your Fun Rock-n-Roll

Mon-Sat

- ★ 2 for 1 EVERYTHING Mon-Fri
- ★ 8:30-10:00 pm \$1 Well, Wine & Draft
- ★ Tuesdays - KZEL Rock Night
96¢ Well, Wine, & Draft
- ★ Wednesdays - Ice Tea Party
\$1 Long Island Ice Tea

INTERNATIONAL at Shilo

Gateway I-5 • 726-1261

ODE Graphic Services II

Typesetting • Camera Work • Design • Paste-up

gerlach's

849 E 13TH AVE
WE OFFER SPEED, QUALITY AND ECONOMY IN PHOTO PROCESSING*

*PICK ANY TWO

HAPPY HOUR



kinko's copies

5pm-Closing 7 Days!

860 E. 13th 344-7894

You'll get there faster with a Resume from ODE Graphic Services!



Look what's happening at Greyhound.

FROM EUGENE TO PORTLAND, OR.

One Way Fare \$9⁰⁰

Round Trip Fare \$18⁰⁰

FROM EUGENE TO SEATTLE, WA.

One Way Fare \$29⁰⁰

Round Trip Fare \$44⁰⁰

NO RESTRICTIONS APPLY

Call Greyhound for details.

EMU Main Desk
x4362

Fares and schedules subject to change without notice.
Subject to ICC approval.

Prices good through November 11, 1984

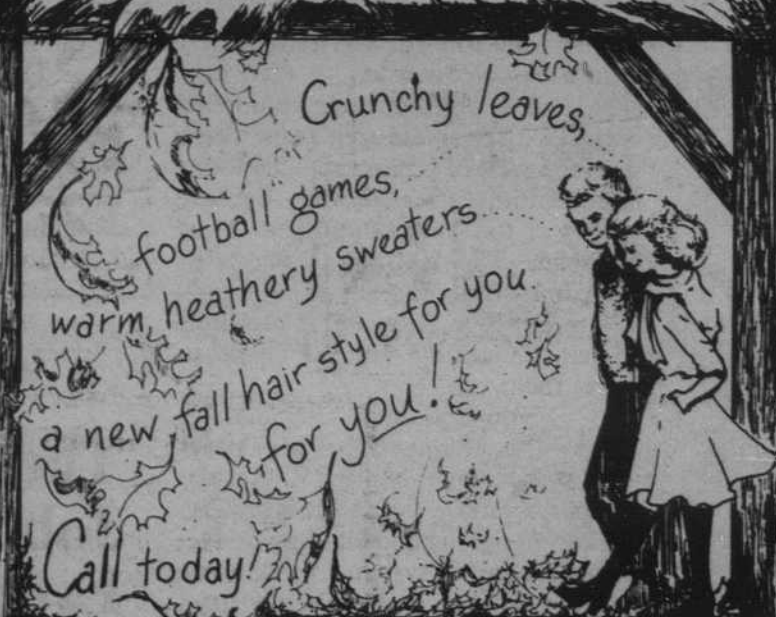
GO GREYHOUND

And leave the driving to us.

© 1984 Greyhound Lines, Inc.

the Hair Loft

for Men and Women



WILLAMETTE CAMPUS COBURG RD. 19th ST.

2855 Willamette (across from Willamette Plaza) 1259 Alder (across from Sacred Heart) 430 Coburg Rd. (behind McYeals Cleaners) 19th St. (next to the Giant Grinder)

686-1496 485-1202 484-6445 484-2565