

Instant
passport
pictures.



Flattering passport pictures, in full color, in just 60 seconds.

When it comes to your passport, it really makes sense to travel first class. And you can — with beautiful, color passport pictures we can make for you in a matter of minutes — while you wait! Our instant passport pictures fully comply with the new U.S. Passport regulations, and they're good for other official documents, too.

Come in soon. We'll help speed you on your way.

gerlach's
CAMERA CENTERS

now available
instant prints
from slides

Campus store
849 E. 13th 344-8890
651 W. Centennial
Springfield, Oregon

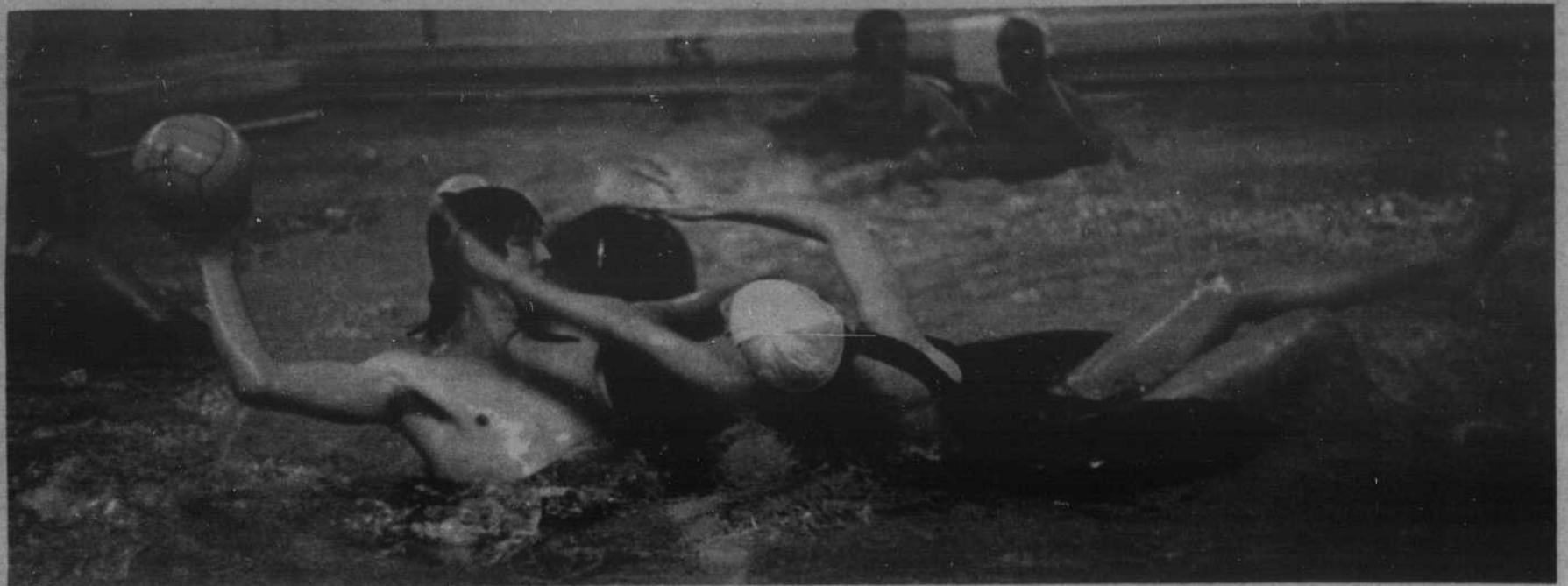


Photo courtesy of RIM

Inner tube water polo is only one of the many innovative sports to get involved in through the University's Recreation and

Intramurals Program (RIM). Polo participants are only allowed to carry the ball for five seconds before they make a play.

Intramurals

Teams can still enter intramural football, volleyball

The Recreation and Intramurals Program (RIM) is extending their deadline until noon Friday for flag and razzle dazzle football teams and also for coed volleyball teams.

The only drawback is that teams entering on Friday will miss the first game. The starting date for flag and razzle dazzle football was Oct. 2. But coed volleyball teams still have a

chance to enter and catch the first game which starts today.

Volleyball teams need a minimum of six members to enter, and football teams need a minimum of eight players. Flag football teams are divided separately into men's and women's, and razzle dazzle teams are divided separately into women's and coed.

According to Karla Rice, RIM director, losing one game will not necessarily hamper a team's chances of competing in the RIM league playoffs.

To qualify for the playoffs, a team only needs to win one game during the season. "We feel that the important thing is participation not competition. We want to give everyone as much of a chance as possible to participate in the playoffs.

Rice says that RIM's non-competitive philosophy gives teams, that may not be doing so well, the initiative to remain in the league and try to win just

one game for a chance to play in the final rounds.

This Friday is also the entry deadline for the Coed World Series Softball Tournament, which starts Oct. 7, and the Ultimate Frisbee Tournament, which starts Oct. 6. Bowling teams must also enter by Friday if they want the chance to compete in all scheduled games.

RIM's league bowling is handicapped and coed with four members per team.

Unlike other RIM league teams, there is no entry fee beyond paying for each member bowling at EMU Lanes during the season.

EMU Lanes is located at the Recreation Center in the basement of the EMU.

Ultimate frisbee is a fast-moving, non-contact sport played by two seven member teams on a field similar to football. The frisbee may only be passed, and a goal is scored when a player successfully passes the disc to a teammate in the endzone which that team is attacking.

Team entry deadline for inner tube water polo is Oct. 8, and the starting date for league play is Oct. 10. Teams must consist of six members, three men and three women. Teams with less than five players must forfeit.

Inner tube water polo is similar to regular polo except that the ball is carried in the lap. All players, including the goalie, must remain seated in their inner tubes at all times while trying to make a goal. The ball can only be held for five seconds in one hand before making a play. A goal is scored when the ball enters the goal cage or strikes the wall behind the goalie.

A Slow Bike Race is scheduled for Oct. 10. The entry deadline is on the same day of the race. Individuals (both men and women) enter separately. The race is set at a slow pace to allow more people the opportunity to participate.

Entry deadline for the Men's World Series Softball Tournament is Oct. 12, and the starting date is Oct. 14.

Entry fees are charged for all league teams except for bowling. There is no fee for non-league play. For more information contact the RIM office at 6864121.

George Rode

• CLOSE TO CAMPUS •
N.I.A.S.E. Certified Technician

**European
Auto
REPAIR**



Tune-ups • Brakes • Fuel Injection

1917 Franklin Blvd. Eugene, Or. 97403 485-8226



Quido's

Relax and Enjoy
your favorite Cocktails

Wine and Beer

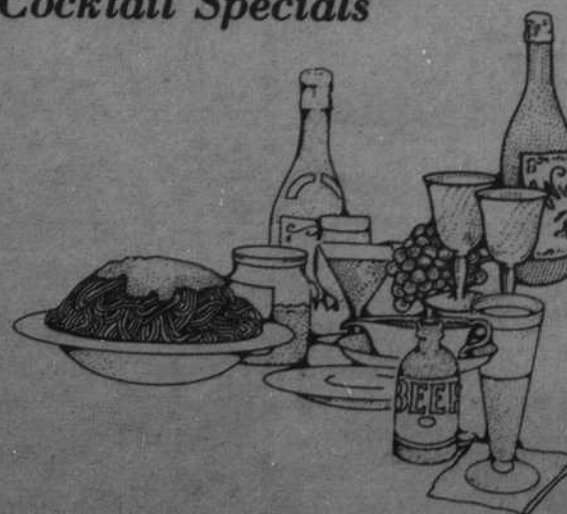
Daily Cocktail Specials

Fine Italian Entrees

Pizzas Pastas Calzone

Sandwiches Salad Bar

Serving Lunch and Dinner



13th & Alder

Orders to Go 343-0681

Compiled by Sheila Landry

Wednesday, October 3, 1984