

Visit parks to play or rest

By Mike Duncan
Of the Emerald

All University students, whether new to Eugene or back for another year, should know where to go to find escape from the harrying world of work and study.

With 78 parks, the Emerald City offers a total of 1,600 acres for picnicking, biking or just plain relaxing. Here are a few of University students' favorites.

Alton Baker Park, near the Ferry Street Bridge off Centennial Boulevard, attracts many sun-loving students, partly because it's only a short walk or ride along the bike path from the University.

Set alongside the Willamette River, Alton Baker is a large, open park ideally suited for sand-lot football games or competition Frisbee tossing.

A creek-fed, cement-lined pond with a landscaped island provides the focal point for the park, which has cooking facilities and a small playground.

Skinner Butte Park, on Cheshire Avenue near High Street, is perfect for everyone from picnickers to rockclimbers.

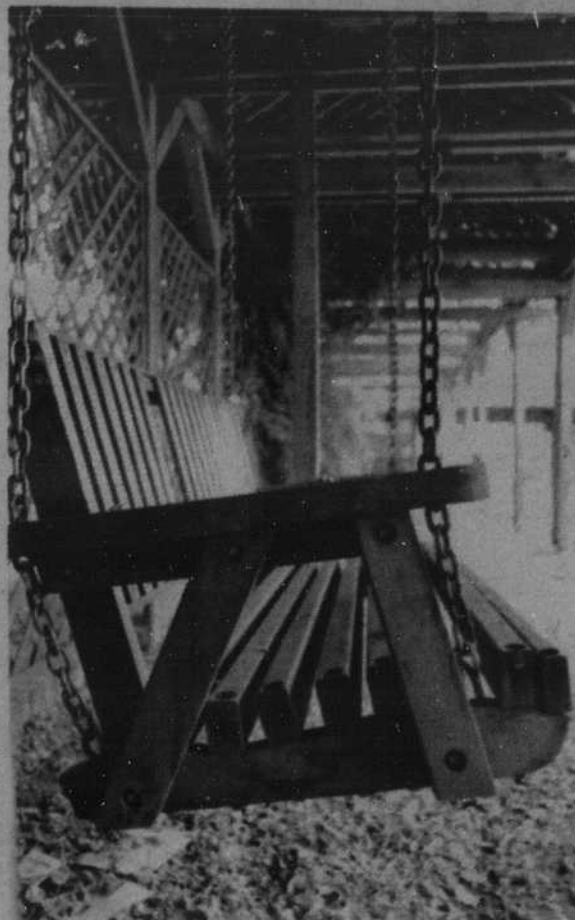
Nestled between Skinner Butte and the Willamette River, Skinner Butte Park is one of Eugene's finest attractions.

The park's long, winding bike path guides its travelers through a well-groomed rose garden and past a 100-foot vertical ascent rock climbing area. A large playground offers recreation for those who choose to keep their feet on the ground.

On the hills lining the other side of campus, Hendrick's Park provides a cool, scenic retreat from class.

Although it's a steep climb up Fairmount Boulevard on East 21st Avenue (east of campus) to get there, Hendricks Park is definitely worth the effort. Initiated by the Eugene Rhododendron Club, the park is a living showcase of many different pure and hybrid strains of rhododendrons.

The exceptionally well-maintained hilltop park, frequented by joggers, also has a covered cooking area with benches that make it ideal for outdoor gatherings.



Photos by Steve Crowell

Covered swinging benches provide a comfortable resting place at the West University Neighborhood Park.

Even closer to the University lies the West University Neighborhood Park, at the corner of East 14th Avenue and Hilyard Street.

If you ever feel the need for a park quick-fix between classes, this is the place. Located just two blocks away from the University library, the West University Neighborhood Park offers a one-block open area surrounded by covered swinging benches. There's a basketball court for a quick game of hoops and a few tables that are great for lunch or outdoor study.




An outdoor amphitheater is only one of Alton Baker Park's attractions. Only a short walk or bike ride from campus lies an open grassy area with a covered pavilion and a maze of paths.

For the BEST
Soup & Sandwiches

PIZAN'S

on Campus at 1225 Alder

Redeem your proof-of-purchase coupons (with each purchase of \$2.50 or more) for Free Cheesecake and Sandwiches.

 Westmoreland
Cooperative
Preschool

Fall Registration will be Friday,
September 21 from 9:30 am to 11:00 am
in the Community room

For more information call Anne Kern
(Parent Director) at 687-9440.

PRECISION HAIRWORKS

\$6 For the best haircut
you can get at any price

corner of 29th & Willamette
no appointments 343-1182
Mon-Fri 9:30-6:00 Saturday 9:30-5:00

MINIT MARKET

The Friendliest Little
Store On Campus

Open 7 days a week • 8:30 am - 12:00 am
536 E. 11th • 687-9594

WELCOME BACK STUDENTS!



- ★ 31 Delicious Flavors
- ★ Cakes and Pies
- ★ Special Sundaes
- ★ Milk Shakes

BASKIN-ROBBINS
ICE CREAM STORE



Come by and see our changes

1365 Villard

484-1031

EVERYDAY HAS A
SPECIAL NIGHT WITH

Feminine Fancies
Lingerie Boutique

Feminine...romantic...and
provocative underdressings and
sleepwear...at...

99 W. Broadway Downtown
484-4040 • Mon-Sat 10-5:30

