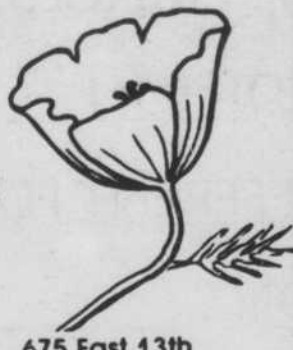


# poppi's

**Brizoles Hirines** Pork chops marinated in herbs and garlic, served with rice, pita bread and vegetable.

**GREEK PEASANT FOOD, WINE- AND SPIRITI**



675 East 13th  
Closed Tuesday  
343-0846

11:30 am-10:30 pm weekdays, 9 am-10:30 pm weekends

## No queen? That's — nonsexist

By Doug Nash  
Of the Emerald

Homecoming without a homecoming queen? Why, that's absurd, senseless. That's, that's —

Nonsexist. And a welcome omission, say this year's "Duck Experience" planners. There will be a homecoming court, of sorts, but it will not resemble those Barbie doll impersonations of past years. Instead, two males and two females, termed "Student Ambassadors," were selected by a committee of faculty, students and community members Friday to be the official student representatives at University functions all year.

Alumni Director Phil Super says the innovation was necessary "to keep pace with the times."

"It's a change from the typical glamorous homecoming queen-type thing," he continues. "That's passe now in our society."

Indeed, the selection process entailed no runways or zit-free complexions. The 12 budding ambassadors, nominated by various campus organizations, were re-



Graphic by Shawn Bird

Continued on page 5B

# Al Stewart

with special guest

# Dave Mason

Saturday, Nov. 12, 8pm  
Silva Concert Hall—Hult Center  
\$11.50-\$10.50-\$9.50 Reserved Seating

Tickets on sale at the usual ticket outlets for additional information call (503) 687-5000. Tickets also available at the EMU Main Desk.

oregon daily  
**emerald**

Editor  
Advertising Manager  
Classified Advertising  
Production Manager  
Controller  
News and Editorial  
Display Advertising and Business  
Classified Advertising  
Production  
Circulation

Debbie Howlett  
Darlene Gore  
Sally Oljar  
Victoria Koch  
Jean Ownbey  
686-5511  
686-3712  
686-4343  
686-4381  
686-5511

The Oregon Daily Emerald special edition, "Homecoming '83" was published by the regular staff of the Oregon Daily Emerald and by the authority of the Oregon Daily Emerald Publishing Company, at the University of Oregon, Eugene, Oreg., 97403

The Emerald operates independently of the University with offices on the third floor of the Erb Memorial Union and is a member of the Associated Press.

For all your typesetting needs: ODE Graphic Services!!

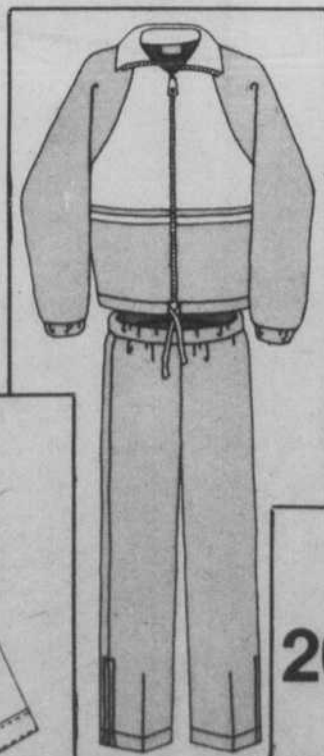
## Get Ready for Winter Action at Anderson's

Monday thru Friday 10 a.m. - 4 p.m.

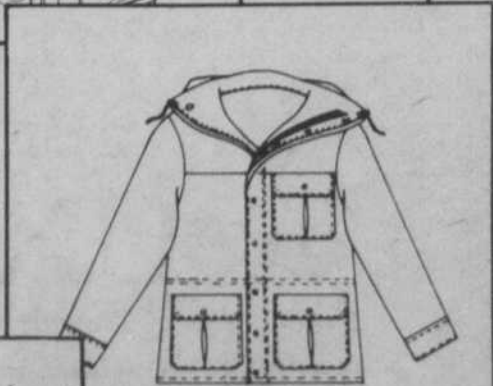
Down Parkas & Vests  
**30% OFF**



Men's & Women's Warm-ups  
**1/2 PRICE**



60/40 Parkas  
**40% OFF**



Tennis Rackets  
**20%-40% OFF**

Converse Jack Purcell  
**\$18.95**



Converse Canvas Hi-Top Assorted Colors  
**\$20.95**



Other court shoes on SALE starting at **\$10.00**

Prices good at Campus Store Only—Remember you can use your Magi-Card to save 10% on non-sale purchases over \$25.00

HARVEY FOX'S  
**ANDERSON'S**  
SPORTING GOODS  
199 W. 9th St.  
Phone 484-7344  
EUGENE • CORVALLIS • ALBANY • SALEM

**Central**  
Lincoln-Mercury

Low Rental Rates for fully equipped Mercury Cars  
-FWD, Lynx and Topaz  
By Day-Week-Month  
(Weekend-Holiday Rates Even Lower)

1711 Willamette  
342-6161  
Open daily 'till 9  
Sat. & Sun. 'till 7

Coupon

**Pipe 'N Pouch**

YOUR IMPORTED TOBACCO MARKETPLACE

- ✓ Clove Cigarettes
- ✓ Rolling Tobacco (Untreated)
- ✓ Wine

**\$1 OFF ANYTHING**

With this Ad and a \$3 or More Purchase One Per Customer

Good Thru 11/5/83

1016 Willamette  
(Between 10th & 11th)  
**485-8888**

Coupon

Monday, October 31, 1983