

Reconditioned Computer Equipment For Sale

Printers.....from \$125.00
Display Terminals.....from \$100.00
Modems.....from \$50.00

15% to 25% off list on all new equipment

Call Us Today and Save!!! 746-2370

DATA 2 SYSTEMS, INC.

40101A McKenzie Hwy. Waltherville, OR 97489



Precision Hairworks

\$6 For the BEST haircut
you can get at any price.

corner of 29th & Willamette 343-1182
no appointment needed Open Mon.- Sat.



CONTACT LENSES

Jeffrey A. Morey, O.D.
David A. Wolf, O.D.

- SOFTCOLORS - tinted, soft lenses. (green, blue, brown, aqua)
- EXTENDED-WEAR (30-day) soft lenses
- Soft lenses for ASTIGMATISM
- Bifocal SOFT LENSES
- GAS PERMEABLE rigid contacts (air-breathing)
- Daily-wear soft lenses all types, including BAUSCH & LOMB, HYDROCURVE, DURASOFT, CSI, HYDRON. Often same-day fit.
- Hard and gas-permeable lenses polished while you wait.

ASK or CALL about our trial fit
soft lens program

HOURS:

Monday thru Saturday
9:00 a.m.- 5:00 p.m.

A Dazzling Array of
Fashion Frames & Lenses
Richard Greene, Optician

766 E. 13th ST.
One block from U of O
Free parking in rear.

343-3333

emu Main Desk

EMU Check Cashing Information

The Erb Memorial Union Main Desk Store cashes checks as a service for students, faculty and staff of the University of Oregon. Students must present a *current* certificate of registration and a plastic identification card with picture; faculty/staff must present their plastic identification card with picture and current validation sticker.

There is a 15 cent service charge per check. Make checks payable to the Erb Memorial Union and include Eugene address and phone number (or department and extension for faculty/staff) on the check. The limit on checks is \$10.00 unless otherwise posted.

When writing checks, double-check your bank balance. Make sure what you think will be a "good check" doesn't turn out to be a "bad check." If your check is returned, there is a service charge of \$7.50. This is in addition to any service charge charged by your bank. You will also lose the privilege of cashing checks at the Erb Memorial Union for the remainder of the year (September 1-June 30).

To abide by policies set forth by the banks: 1) We cannot accept counter checks, 2) There can be no alterations or changes made on checks, 3) We cannot accept personal second party checks and 4) If you do not have personalized checks additional I.D. must be presented.

I.D. FOR CASHING CHECKS PRIOR TO LAST DAY TO
PAY FEES WITHOUT PENALTY.

New Students

1. U of O statement of admission with student ID number.
2. Valid ID with signature and description.

Returning Students

1. Previous term's certificate of registration.
2. U of O plastic ID card with picture.

Students who intend to register Fall Term and will be working on campus this Summer inquire at the EMU Main Desk

fall films

The following films are provided courtesy of the following groups: EMU Cultural Forum, Ananda Marga Society, ASUO Executive, YWCA, Students for a Nuclear Free Future, and the Chinese Student Association. This list is compiled courtesy of the EMU Cultural Forum.

The list may not be complete because some of the film programming groups have not submitted their film schedules.

September

30 "Diner", 150 Geology, 7 and 9:15 p.m.

October

- 1 "An Officer and a Gentleman", 150 Geology 7 and 9:30 p.m.
- 2 "The Tin Drum", 180 PLC, 7 p.m. only
- 7 "48 Hours", 150 Geology, 7 and 9:30 p.m.
"Bad Boys", 177 Lawrence, 7 and 9 p.m.
"Casablanca", 180 PLC 7 and 9:15 p.m.
- 8 "The Year of Living Dangerously", 180 PLC, 7 and 9:30 p.m.
"Fillmore", 150 Geology, 7 and 9:15 p.m.
"The Flight of the Eagle", 177 Lawrence, 7 and 9:30 p.m.
- 9 "An American Friend", 180 PLC, 7 p.m. only
- 14 "My Favorite Year", 150 Geology, 7 and 9 p.m.
"No Nukes", 180 PLC, 7 and 9:15 p.m.
- 15 "Ghandi", 180 PLC, 6:30 and 10 p.m.
"The Rose", 177 Lawrence, 7 and 9:15 p.m.
- 16 "Marianne and Julien", 180 PLC, 7 p.m. only
- 21 "Eating Raoul", 150 Geology, 7 and 9 p.m.
"Love and Death", 180 PLC, 7 and 9:15 p.m.
"Sleeper", 177 Lawrence, 7 and 9 p.m.
- 22 "The Dark Crystal", 180 PLC, 4, 7, and 9 p.m.
"My Brilliant Career", 150 Geology, 7 and 9 p.m.
- 23 "The Marriage of Maria Braun", 180 PLC, 7 p.m. only
- 28 "Rock Around the Clock", 150 Geology, 7 and 9:15 p.m.
"Psycho", 180 PLC, 7 and 9:15 p.m.
- 29 "The Hunger", 150 Geology, 7 and 9 p.m.
"Night of the Living Dead", 150 Geology, Midnight
"The Sentinel", 177 Lawrence, 7 and 9 p.m.
- 30 "Black Christmas", 150 Geology, 7 p.m. only

November

- 4 "Tron", 180 PLC 7 and 9 p.m.
"The Grey Fox", 150 Geology, 7 and 9 p.m.
- 5 "Tootsie", 150 Geology, 7 and 9:15 p.m.
- 6 "The Spirit of the Beehive", 180 PLC 7 p.m. only
- 11 "Das Boot", 180 PLC, 7 and 9:30 p.m.
"The Blues Brothers", 150 Geology, 7 and 9 p.m.
- 12 "Raiders of the Lost Ark", 180 PLC, 4, 7, and 9:30 p.m.
- 13 "Lolita", 180 PLC, 7 p.m. only
- 18 "Blade Runner", 180 PLC, 7 p.m. only
"La Cage Aux Folles", 177 Lawrence, 7 and 9 p.m.
"Everything You Always Wanted to Know about Sex," 150 Geology, 7 and 9:15 p.m.
- 19 "The Man From Snowy River", 180 PLC, 4, 7, and 9 p.m.
"Richard Pryor - Live on the Sunset Strip," 150 Geology 7 and 9 p.m.
"West Side Story," 177 Lawrence, 7 and 9:15 p.m.
- 20 "Richard III", 180 PLC, 7 p.m. only
"Breaking Away", 150 Geology, 7 and 9:15 p.m.

December

- 2 "Sophie's Choice", 150 Geology, 7 and 9:45 p.m.
- 3 "Chinese Connection", 150 Geology, 7 and 9:15 p.m.
"The Seven Samurai," 4 and 8 p.m.
- 4 "Bananas", 180 PLC, 7 p.m. only
- 9 "Casino Royale", 180 PLC, 7 and 9:30 p.m.

Now every body gets 50% off.

Now through October 5, every body who joins the Y gets 50% off the initiation fee—and that includes tennis memberships.

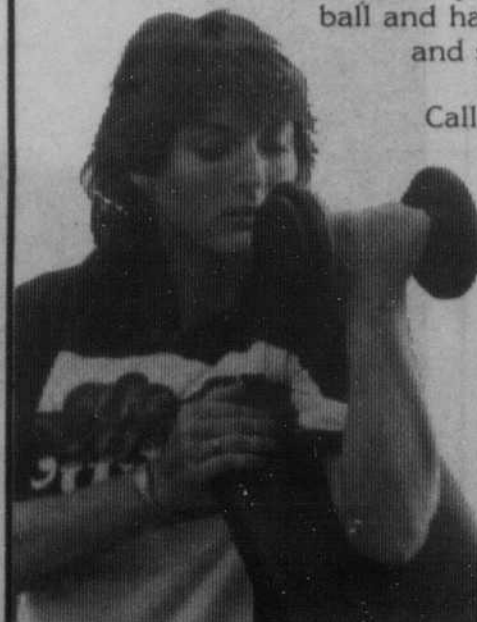
The Eugene Family YMCA has the most complete facilities in town, with 2 pools and a spa, 4 racquetball and handball courts, instruction, and special programs for you.

Call us at 686-9622 for more information, and get half off the regular price, now through October 5 at the YMCA.

There's something
for every body
at the Y.



Eugene Family YMCA
2055 Patterson • 686-9622



Scientist presents lung damage study

SEATTLE (AP)— It is too soon to say ash from the eruption of Mount St. Helens is causing permanent lung damage in loggers who worked near the volcano, says a scientist involved in researching the question.

Preliminary studies have indicated scarring of lung tissue, but that does not necessarily mean an impairment in breathing ability, Dr. Thomas Martin said Tuesday.

Martin delivered a report on a study of the effects of ash on loggers during the Washington State Medical Association convention, which concluded Sunday in Seattle.

The study on the loggers is being directed by Dr. Sonia Buist, professor of medicine at the Oregon Health Science University, said Martin, a lung specialist and assistant professor of medicine at the University of Washington. His part in the research has been conducting tests on laboratory rats, he said.

The number of loggers involved in Ms. Buist's study totals more than 400, not the 40 earlier reported, Martin said.

Wednesday, September 28, 1983