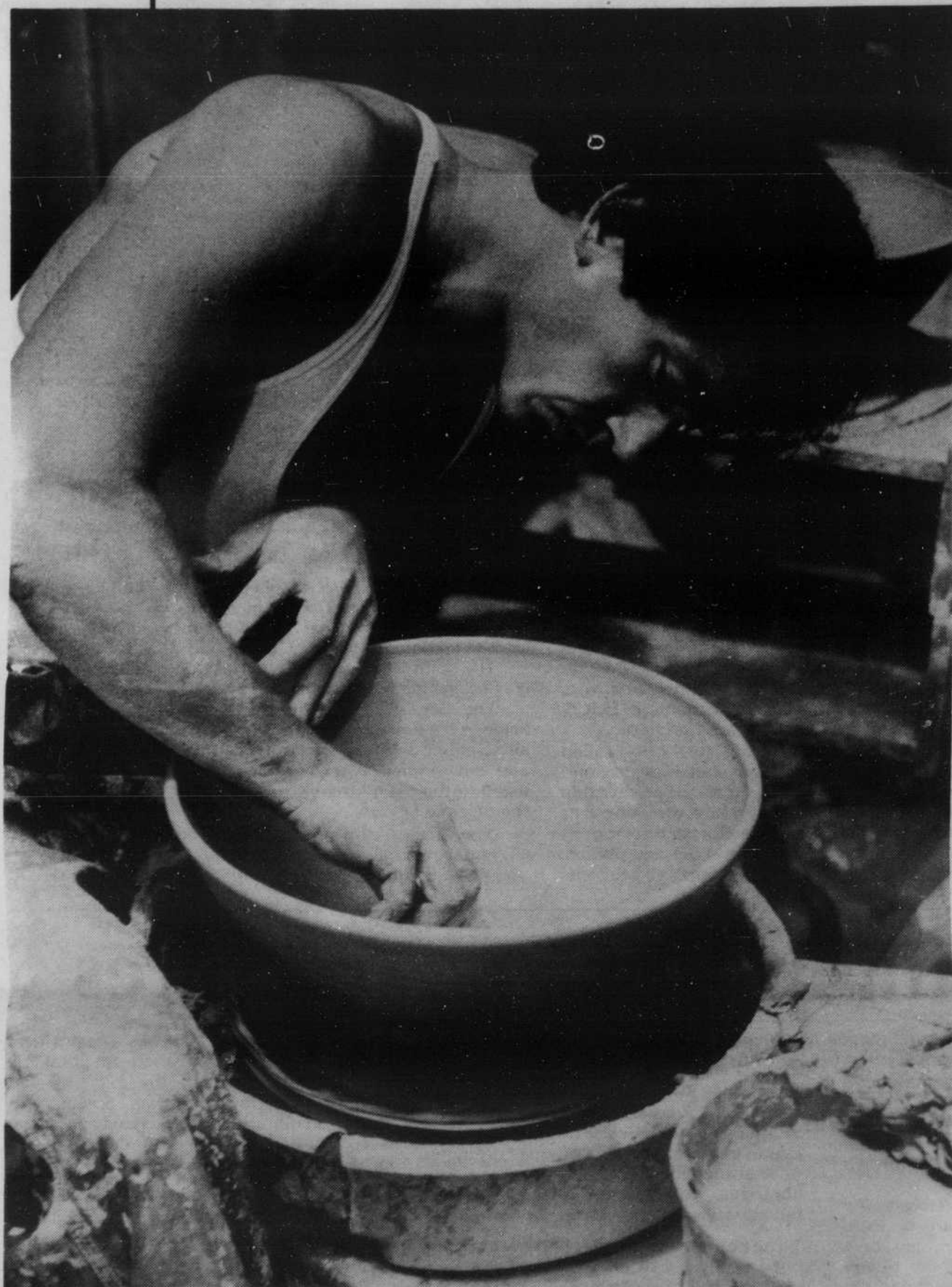


# Crafty arts



## Tools create, repair

Pity the poor University students; they don't have enough money to take photos of friends, replace a broken lamp, or fix the two-wheeled means of transportation that brought a chuckle to the Schwinn salesperson.

Lament no longer... satisfaction is as easy as joining the EMU Craft Center.

More than 300 students take advantage of the Craft Center each term and make use of six photographic darkrooms (three of which are equipped for color developing), a woodshop, a metal working area and a ceramic studio with high fire capabilities.

In addition, the center offers workshops that not only show members how to use the facilities but also teach particular skills.

For example, this fall students can spend an afternoon in the 'bike doctor' class learning bicycle care and maintenance or devote six weeks — 18 hours of instruction — to 'beginning wood' and learn how to use the facilities but also teach particular skills.

For example, this fall students can spend an afternoon in the 'bike doctor' class learning bicycle care and maintenance or devote six weeks — 18 hours of instruction — to 'beginning wood' and learn how to use power tools and gain a knowledge of wood properties.

And these are only two of 38 workshops available this fall.

A special feature this fall will be a series of mini-workshops during the holiday season designed to help students who intend to make their own gifts.

Stained glass ornaments, knitting, patchwork and wood-working are just a few of the planned holiday workshops according to assistant director of the Craft Center Diane Hoffman. And the instruction will be top-notch.

"Our instructors are pretty much all professional craftspeople in the Eugene area," Hoffman says.

Each term the Craft Center, which is open seven days a week, publishes a pamphlet listing the various workshops and classes planned for the term, but if enough interest is expressed specialized workshops can be arranged.

For students already proficient at particular activities who aren't interested in taking a class or workshop, the facilities can be used by paying the \$6 per term membership fee or \$1 per day users fee.

All University students, faculty, staff and their spouses are eligible to use the Craft Center at those costs. Alumni may use the facilities for twice that rate, as can the community at large, but community members must enroll in a workshop, which often costs extra.



Upper left: Pottery instructor Michael Berkley at work. Upper right; Bill Fuller uses the table saw. Bottom: Bob Williams works on making a guitar.

Story by Jim Moore  
Photos by Dave Kao