



656 CHARNELTON
(BETWEEN 6th & 7th)
687-0111

9:30 TO 5:30
Mon.-Fri.
10:00 TO 5:00 Sat.



RING UP SAVINGS WITH A PHONE FROM US



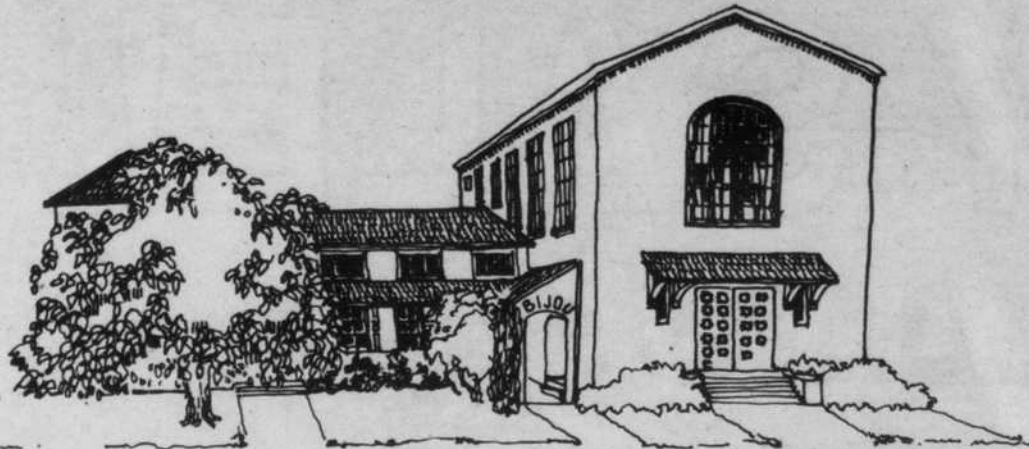
STOP!!!

DON'T PICK UP THAT PHONE!!!

NOT UNTIL YOU'VE CHECKED OUT THE GREAT SELECTION AND GREAT BUYS ON PHONES AT PHONES PLUS.

SAVE TIME AND MONEY WHEN ORDERING YOUR NEW PHONE SERVICE BY PICKING UP YOUR PHONE AT PHONES PLUS BEFORE VISITING THE PHONE COMPANY.

PHONES PLUS HAS BEEN SAVING STUDENTS MONEY ON PHONES SINCE 1980.



Entering our fourth year of providing delightful movies for the University community, The Bijou Theatre staff and management look forward with great pleasure to your continuing patronage during this new year of challenging studies and exhilarating entertainment.

See these great films at The Bijou during the coming months:

Zeffirelli's **La Traviata**
We of the Never Never (Australian)
Koyaanisquatsi
Pauline at the Beach, directed by Eric Rohmer

THE BIJOU THEATRE
492 E. 13th Ave. / 686-2458

Earth River Records and Tapes

Oregon's Best Selection of Records and Tapes

✓ Rock
✓ New Wave
✓ Punk
✓ Jazz
✓ Metal

✓ Soul
✓ Blues
✓ Oldies
✓ Classical
✓ Audiophile

THOUSANDS OF IMPORTS LP's and Singles

"Whatever your desires, we can satisfy you!"

2 Locations:

Campus
762 E. 13th • 342-2088
(Old Play It Again location)
Campus Location Buys and Sells Used Records

Downtown Mall
62 W. Broadway
343-8418
(West of Willamette Fountain)



THIS AD GOOD FOR \$1 OFF ANY NEW RECORD OR TAPE

(No sale items) Offer Expires Sept. 30



Hult sees first year

September marks the first anniversary of Eugene's spectacular Hult Center for the Performing Arts. For the past year it has brought a variety of national and world-class acts to Eugene, while providing a venue for local artists. Those acts have come and gone, but in their wake are memories that cover the entire spectrum of performance from the avant-garde to the classical — country, folk, rock, classical, religious, jazz, and pop music; opera; and ballet. Among last years performers were Mel Torme, Jimmy Buffett, The Grateful Dead, John Prine, Jerry Lee Lewis, The Tubes, Marilyn Horne, Ella Fitzgerald, Hoyt Axton, Chuck Mangione, and the New York Philharmonic.

The Fall schedule is eclectic. Pearl Bailey and Louie Bellson will be in the Silva Concert Hall Saturday at 7 p.m. for a special performance celebrating the Center's first birthday. Following the performance will be a champagne reception in the Community Room and from Midnight to 1 a.m. there will be a buffet supper catered by the Valley River Inn and dancing on the stage of the concert hall. Tickets are available for \$25 by invitation only. Tickets not sold by September 15 will be sold to the general public at the Valley River Inn.

On Sunday, October 2 from 10 a.m. to Midnight the city of Eugene will host an open house at the Hult Center. There will be free concerts and refreshments all day. Other highlights of the season

are the "Best Little Whorehouse in Texas," Leo Kottke and Jesse Colin Young, Oslund & Company the Oregon Mozart Players, the Statler Brothers, Roger Whittaker, Roy Clark, the Ballet De Nacional De Espana, the Oregon Repertory Theatre's "Picnic," and Joan Baez.

Housed in the Hult Center are the Silva Concert Hall and the Soreng Theatre.

The 2,531 seat Silva Hall was designed to provide high-quality acoustics in an attractive setting. The basket-weave ceiling and walls and varied surfaces within the hall add texture and richness to its appearance while preventing echoes and flat-plane sounds. The hall is equipped with a complicated computerized audio system capable of providing an acoustically perfect performance for any kind of music. Steep, horseshoe shaped balconies and a gently sloping main floor provide good sight-lines from every seat in the hall.

The 515 seat Soreng Theatre gives audiences the opportunity to see entertainers up close. Its split level design provides a good view from straight-on, but gives people sitting on the sides awkward sight-lines.

Ticket prices for Hult center shows range between \$6.50 and \$33.50 and are sold at the Bon, Meier & Frank, The Record Garden, Valley River Records, G.I. Joe's, the EMU Main Desk and the Hult Center Box Office.

Lisa Sieg

Hult Center fall calendar

September

Monday 22, Noel Paul Stookey of Peter, Paul, and Mary 8 p.m. Silva
Tuesday 20, Jane Powell in "Inside Out" (world premiere) 8 p.m. Silva
Thursday 22, ESO/Classical I Misha Dichter 8 p.m. Silva
Saturday 24, Pearl Bailey w/Louie Bellson 7 p.m. Silva
Sunday 25, ESO/Superkpop I w/ Victor Borge 8 p.m. Silva
Thursday 29, Eugene Opera "The Magic Flute" 7:30 p.m. Soreng
Friday 30, Eugene Opera "The Magic Flute" 7:30 p.m. Soreng
Cascade Chorus/SPBSQA semi-finals 8 p.m. Silva

October

Saturday 1, Cascade Chorus/SPBSQA semi-finals 8 p.m. Silva
Sunday 2, City of Eugene Open House 10 a.m. — midnight all halls
Sunday 2, Eugene Opera "The Magic Flute" 2 p.m. Soreng
Tuesday 4 and Thursday 6, Eugene Opera "The Magic Flute"
Friday 7, "Best Little Whorehouse in Texas" 7 p.m. Silva
Saturday 8, "Best Little Whorehouse in Texas" 7 p.m. Silva
Saturday 8, Eugene Opera "The Magic Flute" 7:30 p.m. Soreng
Sunday 9, Eugene Opera "The Magic Flute" 2 p.m. Soreng
Tuesday 11, Eugene Opera "The Magic Flute" 7:30 p.m. Soreng

Thursday 13, Leo Kottke and Jesse Colin Young 8 p.m. Silva
Monday 17, Oslund and Company 7:30 p.m. Soreng
Thursday 20, Mary O'Hara 7:30 p.m. Soreng
Thursday 20, ESO/Classical II: Miriam Fried 8 p.m. Silva
Friday 21, Prodigal Daughter w/Jane Van Boskirk 7:30 p.m. Soreng
Saturday 22, Oregon Mozart Players 7:30 p.m. Soreng
Tuesday 25, Ballet De Nacional De Espana 8 p.m. Silva
Wednesday 26, Myron Floren w/Lawrence Welk All-Stars 8 p.m. Silva
Thursday 27, Oregon Repertory Theatre "Picnic" 7:30 p.m. Soreng
Friday 28, Oregon Repertory Theatre 7:30 p.m. Soreng
Saturday 29, Oregon Repertory Theatre 7:30 p.m. Soreng
Saturday 29, The Statler Brothers 7 p.m. Silva
Sunday 30, The Acting Company in "Merry Wives of Windsor" 8 p.m. Silva
November
Thursday 3, Oregon Repertory Theatre 7:30 p.m. Soreng
Friday 4, Eugene Ballet "Bolero" 8 p.m. Silva
Friday 4, Oregon Repertory Theatre 7:30 p.m. Soreng
Saturday 5, Eugene Ballet "Bolero" 2:30, 7, and 8 p.m. Silva

La Posada

MEXICAN FOOD AT ITS FINEST

Imported & Domestic Wines & Beer

685 E. Broadway,
Eugene
344-1091

11:00 a.m. to 9:30 p.m.
Tuesday - Sunday
Closed Monday

