

# Ducks hope to bust Aztecs' golden record

By John Healy  
Of the Emerald

So they're 1-3, right?  
Yeah, and that probably means another year of lackadaisical Oregon men's basketball. After all, if you can't win in the preseason, how are you going to win a game during your Pac-10 schedule?

Right?  
Wrong, says Oregon coach Jim Haney, who leads the Ducks against undefeated San Diego State Saturday night at McArthur Court.

"Every team we've played in the last three games would do well in our conference," affirms Haney. "We could have played other teams than Cal-Irvine, Richmond, Rutgers and San Diego State (all NIT participants last year) and been 3-1 right now. But it would have been false happiness."

The 4-0 Aztecs, second in the Western Athletic Conference in 1981-82, will be Oregon's toughest test so far this year, says Haney.

Coach David "Smokey" Gaines directs a San Diego State offense that is averaging 93 points per game and which features four players who started 18 or more games last year. The Aztecs dumped 87-74 at Mac Court last fall.

"San Diego State has to be seen to be believed," Haney says. "They're like an NBA team with their talent."

Junior 6-9 forward Michael Cage could prove to be the most difficult Aztec for the Ducks to defend. Cage, who was second team all-conference in the Western Athletic Conference last year, is averaging 23.0 points and 17.0 rebounds per game this fall.

Senior Aztec guard Keith Smith is San Diego State's other "name" player. The 6-0 WAC honorable mention selection averaged 12.8 points and 7.3 assists per game last fall, and leads the Aztecs' fastbreak.

But Cage is the linchpin in what Haney considers the Aztecs most important tool — their rebounding power.

"Their rebounding has to be a concern," Haney says. "They remind me of Arizona State a couple of years ago, when they had Alton Lister and Sam Williams, because they are very strong rebounders."

Williams and Lister, both currently playing in the NBA, anchored the Sun Devils in 1980-81 when ASU made the NCAA tourney with a 24-4 mark.

Haney believes, however, that the Ducks can hold their own on the boards.

"We're not a strong rebounding team in terms of power. We're scrappy, tough, and we pursue the ball

well," Haney says. "We get 80 percent of all rebounds outside of eight feet from the basket."

The Ducks may be able to limit Cage's effectiveness if games against Rutgers and Richmond are any indication. Oregon shut down both team's power forwards, holding Richmond forward Bill Flye to seven points and Rutgers forward Clarence Tillman to a 2-for-10 night from the field.

Haney feels fairly confident in Oregon's defense, and although he still has concerns over the Ducks' play on offense, he feels the improvement over last fall has been tremendous.

"Our team is further along than last year. If we had last year's team, we wouldn't be 1-3 right now," Haney says.

"We scored a lot of points last year, but we weren't a good offensive team. We didn't strive to improve our points per possession last year."

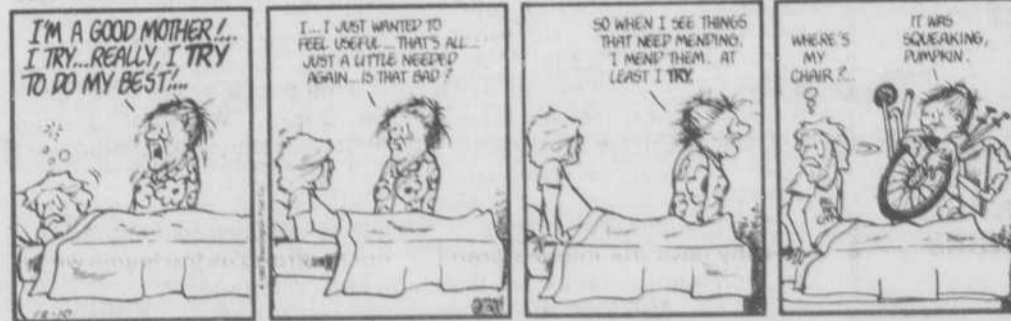
That's not the case this year, Haney says. "Our shot selection has been good. When we start meeting our passes and start consistently making good decisions on our passes, our offense will improve."

**DUCK NOTES:** Oregon is allowing only 52.7 points per game. The last time a team held the Aztecs to less than 53 points was in January, 1981, when Wyoming knocked off San Diego State 69-51. Forward David Brantley is still recovering from a viral infection, but Haney says "he'll give 100 percent."

## DOONESBURY



## BLOOM COUNTY



by Garry Trudeau

by Berke Breathed

## et al.

### MEETINGS

**International Students' Fellowship** meets tonight at 7:30 at the Way Inn at 1332 Kincaid for singing, sharing, Bible study, and fellowship.

**Campus Crusade for Christ** presents a special Christmas edition of their regular weekly meeting, "Prime Time," tonight. For a study break, Christmas carols, and a celebration of the true meaning of Christmas, join us from 6:30 to 8 p.m. at the Newman Center, near the corner of 18th and Emerald. Everyone is welcome.

### SPEAKERS

**Antler** will read from *Factory* (a book of poetry) and other works on Monday at 7:30 p.m. at the Homefried Truckstop, 790 E. 14th. Many of Antler's poems deal in a broad way with wilderness, ecology and survival.

### MISCELLANEOUS

**Educational Environments (EEI)** presents a Holiday Book Fair today from 8:30 a.m. to 6 p.m. and tomorrow from 11 a.m. to 3 p.m. at the corner of Saratoga and Fox Hollow. Books for children and adults will be available. James Cloutier will autograph his latest book, *This Day in Oregon*, on Saturday.

**A candlelight vigil to focus attention on the problem of drunk driving** and its cost to our society in terms of death and injury will be held Sunday at 5 p.m. at 125 E. 12th, on the steps of the Lane County Courthouse. Sponsored by Mothers Against Drunk Drivers. Open to public.

**Today is your last chance to find a hand-crafted gift at the Christmas Craft Fair**, in 167 EMU. Come enjoy the live music and have a cup of cider. Open from 10 a.m. to 4 p.m.

**Reggae Lovers:** There will be a dance tonight at LCC from 7 p.m. to 1 a.m. with the Illuminations, Arousing Spirit, T.A.I.U. and Strictly Roots. Sponsored by ASLCC. Tickets are \$3 in advance at the LCC bookstore and the EMU main desk or \$3.50 at the door.

**Economics Majors:** Sophomores and juniors interested in being an economics peer advisor. Apply in 414 PLC. Upper division Econ credit available. Work study eligible. Looking for motivated and enthusiastic student.

**The University Lacrosse Club will host Portland's Multnomah Lacrosse Club** this Saturday at 2 p.m. on the South Bank Athletic Field (at the base of the footbridge). See for yourself why lacrosse is called the "fastest sport on two feet."

# Classifieds 686-4343

## Clothing

**LAST DAYS OF OUR SALE**  
15% off everything  
**SALE ENDS SUNDAY, DEC. 12**  
(12% off for credit cards)

**ANDREA'S CLOTHES & CLOTH**  
2441 Hilyard 345-1324  
Mon-Sat 10-7 Sun 12-6  
732-12-10

**BUY-SELL-TRADE-CONSIGN**  
**OLD FRIENDS**  
1128-A Alder 10:30-5:30  
Featuring fine vintage apparel and contemporary fashions. 805-MWF

## For Sale

**SCUBA SWAP**  
Lane Co. Fairgrounds. Turn your gear into \$ or buy at swap meet prices. Consignments taken now. 12-10

**SOLID OAK** Upright piano, good condition. \$800 or best offer. Call 343-9200. 12-10

**MUST SELL** 15 reconditioned color TVs, buy a TV get a 7 function digital watch free. 686-9719 after 7 pm. 1-10

## CIS STUDENTS

Look into the computer your professor are buying. Call Sterling for a Christmas quote on Apple and Atari systems at 344-2602 evenings. 12-10

**PHILIPS TURNTABLE** \$25. Call 683-1229. 12-10

**TICKETS TO HAWAII** and any Hawaiian city. **must sell**, \$175. 686-5288. 485-9892 anytime. Let ring. 12-10

**PIONEER SHELF SPEAKERS** KH750. Good condition. \$30 each. Young. 244-0222. 12-10

**KNITTING MACHINE** Great for Christmas gift. \$50 or best. 244-0506. 12-10

**POOL TABLE** Excellent. \$100. New microphone. Paid \$105, sell for \$50. Call 245-5266. 12-10

**BOY'S BICYCLE** 3-speed, good condition, and desk. Must sell! Call 242-5402. 12-10

**ROSSIGNOL SM** 203 cm w/ Solomon 555 bindings. Good condition. Must sell, \$125. Grace 242-5078. 12-10

**K2 RACING SKIS** Good price. Call today or over weekend for information. 244-9556. 12-10

## Buy & Sell

**THE BUY & SELL CENTER**  
Buy-Sell-Trade  
Musical instruments, photo equipment, backpacking gear, stereos and tools.  
361 WEST 5th 327-MF

## Instruction

**ENGLISH TUTORING:** Experienced instructor, EdM in teaching ESL. Kay Westerfield. 242-5627. 12-10

**Vic Commodore 20 & 64 COMPUTER DEMO**  
Dec. 8, 9, 10, 1-4 pm  
Come in and see one of the most sophisticated mini-computers. A computer rep will be demonstrating its capabilities. Make it your for \$595 at the UO Bookstore. 725-12-10

**NEW WINTER CLASSES**  
Arch 407 Adobe Tech & Design  
Arch 497 Housing for Elderly  
Arch 408 Model Making Material  
Art 291 Drawing  
CIS 242 Bus Info Process  
CIS 199 Microcomput app  
HEP 408 Great Food/Less \$5  
HS 199 Intro Admin of Just

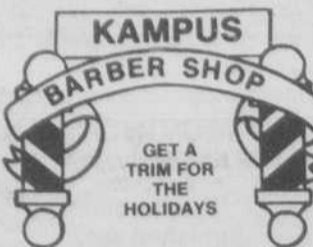
For further information please call Continuation Center, 686-4231 747-12-10

**BEAUTIFUL!**  
Counseling office  
You use it while I don't.  
Call 343-2079 12-10

**Typing**  
**FAST, PROFESSIONAL TYPING**  
IBM Correcting Electric  
Graduate School Approved  
Call Paula Demong - 484-9405

**Services**  
**KAMPUS BARBER SHOP**  
GET A TRIM FOR THE HOLIDAYS  
**FOR QUALITY TYPESETTING, DESIGN, layout, pasteup and camera work, come on up to the Oregon Daily Emerald Jobwork Department, 200 EMU, 686-4381, ask for Annie. Noon to 4 pm, Monday through Friday. 10% discount on resumes for UO students with current ID and fee card. tfn**  
**FIREWOOD DELIVERED** Oak, \$70/cord, fir, \$60/cord. Call 344-3022. tfn  
**SELF DEFENSE FOR WOMEN** beginning January 11, for 8 weeks, cost \$15. Sponsored by the West University Neighbors and Sacred Heart. To enroll call Charleen at 687-5266. 12-10  
**PET SITTING** No pet worries while your vacationing. Call 687-0561. 12-10  
**THERAPEUTIC MASSAGE**  
For relaxation in body, mind, spirit get a Full Body Massage. Gift certificates available. Holiday special: Buy 2, get one free. Loren Swift, M.T. State Licensed. 485-6742. 358-HFM

## Services



**FOR QUALITY TYPESETTING, DESIGN, layout, pasteup and camera work, come on up to the Oregon Daily Emerald Jobwork Department, 200 EMU, 686-4381, ask for Annie. Noon to 4 pm, Monday through Friday. 10% discount on resumes for UO students with current ID and fee card. tfn**

**FIREWOOD DELIVERED** Oak, \$70/cord, fir, \$60/cord. Call 344-3022. tfn

**SELF DEFENSE FOR WOMEN** beginning January 11, for 8 weeks, cost \$15. Sponsored by the West University Neighbors and Sacred Heart. To enroll call Charleen at 687-5266. 12-10

**PET SITTING** No pet worries while your vacationing. Call 687-0561. 12-10

**THERAPEUTIC MASSAGE**  
For relaxation in body, mind, spirit get a Full Body Massage. Gift certificates available. Holiday special: Buy 2, get one free. Loren Swift, M.T. State Licensed. 485-6742. 358-HFM

**BEAUTIFUL!**  
Counseling office  
You use it while I don't.  
Call 343-2079 12-10

**Typing**  
**FAST, PROFESSIONAL TYPING**  
IBM Correcting Electric  
Graduate School Approved  
Call Paula Demong - 484-9405

**TYPING UNLIMITED**  
747-9296  
**Grad School Approved/Guaranteed**  
Electric. Call for pricing. 349-tfn

**TYPING/EDITING**  
Call Judy or Sara  
686-0739 328-HFM

**PROFESSIONAL TYPIST:** Statistical specialist. IBM Corr. Sel. Grad. approved. Near campus. 344-0759. 954-tfn

**PRO TYPING/EDITING**  
2 blocks from UO. No job too small. Specializing in theses and dissertations.  
**Jennifer 485-3883** 345-tfn

**HAWK WORD PROCESSING:** Computer system makes typing obsolete. Theses, reports, resumes. Free pickup/delivery. 345-6165. 234-tfn

**CAROL'S PROFESSIONAL TYPING SERVICE** 245-2289. 12-30

**ELITE TYPING SERVICE**  
FAST-GUARANTEED-ACCURATE  
Free pickup/delivery  
484-1646 748-tfn

**TYPIST** Experienced-professional. Any project large or small. Brandy, 484-6044. 934-UF

**K-C TYPING SERVICE**  
Resumes, student papers  
Call Karen, 683-1117 12-10

**TYPING WANTED**  
Term papers, manuscripts, letters.  
FAST-ACCURATE  
\$.85 page double space  
IBM Self-Correcting  
344-5856 704-12-10

**TYPING**  
Will do typing in my home. Reasonable rates, IBM Selectric. Call Terry, 688-0202. 12-10

**ELECTRONIC TYPING:** Choose typeface, format. **Professional editing:** spelling, grammar, style. 683-2125, 245-8644. 12-10

**EXPERIENCED TYPIST** IBM Selectric. Will do most typing jobs including papers, tables, theses, etc. Have seven years experience. 688-8124. 029-12-10

**TYPING:** 15 years experience. Papers, dissertations, editing. Graduate School Approved. IBM Selectric. Pick-up and delivery. Call Carole at 688-3983. 514-tfn

**A PLUS TYPING**  
\$1/ds pg/\$.05/ss line  
Call Syn 344-8735 596-tfn

## Instruments

**CUSTOM BASS GUITAR** for sale. \$200 or best offer. Call Troy, 345-1148, keep trying! 12-10

**KUSTOM III LEAD AMP** Versatile, 130 watts, 4-12 bottom. Call Larry, 242-3581. 12-10

**WASHBURN D-25** and Aria Classical, both 4 yrs. Old, good shape, great one, with hardshell cases. New value \$250 each, your choice \$175 or both for \$225. Michael 689-1614. 12-10

**USED GUITARS**  
Specializing in Gibson, Fender, Martin  
**BUY-SELL-TRADE**

**McKenzie River Music**  
343-9482 • 525 E. 13th

## Sound Systems

**Jim's Electronics**  
STEREO REPAIR  
AUDIO SERVICES  
1627 Pearl Street 343-7683  
Monday thru Friday 9-6 pm  
Saturday 9-1 pm 388-tfn

**BOSE 1401** amp and speaker set. One year old, new \$290, my price \$275. In box, used 6 months, perfect. 688-1141. 12-10

**MARANTZ BOOKSHELF** speakers, two-way, great sound, \$95 for the pair. 242-8184. 12-10

**MARANTZ SUPERSCOPE** professional portable cassette recorder, Model 206 LP, variable record and playback. Near new, plus blank tapes, \$145. Michael 689-1614. 12-10

**WANTED:** Receiver and amp for Christmas gift for teenager. Will pay up to \$100. Call 689-4541 evenings. 12-10

## Gifts

**THE ULTIMATE PERSONAL GIFT!**  
Gift certificates available for style cuts, only \$9 at Hair Today. Other great gift ideas. 561 E. 13th, 485-4422. 12-10

**PAPER TRADERS**  
has the best selection of cards. It's worth a trip. Two locations:  
5th Street Southtowne  
Public Market at 28th & Oak

**Emerald Christmas**  
OR  
**Happy Holidays**  
with a holiday touch!  
**SPICE UP YOUR**  
**noel notes**  
with HOLIDAY ART!  
For these and other holiday season graphics come to the ODE office, 300 EMU, the EMU Main Desk, or the UO Bookstore. Art is \$2 and does not include type.

**NOW YOU CAN SAY**  
**Happy Holidays**  
with a holiday touch!  
**SPICE UP YOUR**  
**noel notes**  
with HOLIDAY ART!  
For these and other holiday season graphics come to the ODE office, 300 EMU, the EMU Main Desk, or the UO Bookstore. Art is \$2 and does not include type.

**NOW YOU CAN SAY**  
**Happy Holidays**  
with a holiday touch!  
**SPICE UP YOUR**  
**noel notes**  
with HOLIDAY ART!  
For these and other holiday season graphics come to the ODE office, 300 EMU, the EMU Main Desk, or the UO Bookstore. Art is \$2 and does not include type.

**NOW YOU CAN SAY**  
**Happy Holidays**  
with a holiday touch!  
**SPICE UP YOUR**  
**noel notes**  
with HOLIDAY ART!  
For these and other holiday season graphics come to the ODE office, 300 EMU, the EMU Main Desk, or the UO Bookstore. Art is \$2 and does not include type.

**NOW YOU CAN SAY**  
**Happy Holidays**  
with a holiday touch!  
**SPICE UP YOUR**  
**noel notes**  
with HOLIDAY ART!  
For these and other holiday season graphics come to the ODE office, 300 EMU, the EMU Main Desk, or the UO Bookstore. Art is \$2 and does not include type.

**NOW YOU CAN SAY**  
**Happy Holidays**  
with a holiday touch!  
**SPICE UP YOUR**  
**noel notes**  
with HOLIDAY ART!  
For these and other holiday season graphics come to the ODE office, 300 EMU, the EMU Main Desk, or the UO Bookstore. Art is \$2 and does not include type.

**NOW YOU CAN SAY**  
**Happy Holidays**  
with a holiday touch!  
**SPICE UP YOUR**  
**noel notes**  
with HOLIDAY ART!  
For these and other holiday season graphics come to the ODE office, 300 EMU, the EMU Main Desk, or the UO Bookstore. Art is \$2 and does not include type.

**NOW YOU CAN SAY**  
**Happy Holidays**  
with a holiday touch!  
**SPICE UP YOUR**  
**noel notes**  
with HOLIDAY ART!  
For these and other holiday season graphics come to the ODE office, 300 EMU, the EMU Main Desk, or the UO Bookstore. Art is \$2 and does not include type.

**NOW YOU CAN SAY**  
**Happy Holidays**  
with a holiday touch!  
**SPICE UP YOUR**  
**noel notes**  
with HOLIDAY ART!  
For these and other holiday season graphics come to the ODE office, 300 EMU, the EMU Main Desk, or the UO Bookstore. Art is \$2 and does not include type.

**NOW YOU CAN SAY**  
**Happy Holidays**  
with a holiday touch!  
**SPICE UP YOUR**  
**noel notes**  
with HOLIDAY ART!  
For these and other holiday season graphics come to the ODE office, 300 EMU, the EMU Main Desk, or the UO Bookstore. Art is \$2 and does not include type.