

## MEETINGS

The Jewish Student Union will hold a general membership meeting tonight at 7 in 113 EMU. Meet representatives of the four Jewish groups on campus. Find out who we are and what we do. There will be refreshments and music. For more information, visit the JSU Office at Suite 5, EMU or call 686-4366 or 345-4478.

**SNUFF will be holding an organizational meeting for the Nov. 1 die-in at 7 p.m. tomorrow in 112 EMU. All are**

welcome, help is needed.

**SNUFF (Students for a Nuclear Free Future) will be holding a meeting tomorrow at 5 p.m. in 112 EMU. All are welcome.**

**International Studies Association will be holding a meeting today at 4:30 p.m. in 837 PLC (Intl. Stud. Dept. Office). We have an important agenda, all members are requested to attend. Everyone is welcome.**

**All persons interested in joining the Society of**

**Professional Journalists** should attend an introductory meeting at 7:30 p.m. in 301-B Allen.

## SEMINARS/WORKSHOPS

**Sign up today for the Mask Workshop** in the Craft Center, Suite 69, EMU. The workshop will be held Tuesday and Thursday from 5:30 to 7 p.m.

**Second session Fall term classes begin at the Easter Seal Pool today** with classes offered for parents and their children, pre-school children, six-year-olds and up, and adults. A special swim exercise session is slated to start Nov. 5. Also new on the agenda, a Monday-Wednesday senior-only swim for those 55 and over. For more information call 686-9290 or drop by the pool at 3575 Donald. Contact Pool secretary Carolyn Nelson for more information.

## SPEAKERS

**Frank Wilkinson, director emeritus of the National Coalition Against Repressive Legislation, will speak at two events today** on campus. "Draft Prosecutions and Financial Aid Restrictions - Your Vote, Your Freedom" is the title of his first lecture today at 2:30 p.m. in the EMU Forum Room. His second lecture, "Strom Thurmond's 'Anti-Crime' Bill - Repressive Legislation in the Lame-Duck Congress," will be held in 125 of the Law School at 7:30 p.m. tonight. Both events are free and are sponsored by the Student Bar Association, Political Science Student Union and Campus ACLU.

**Surviving a Nuclear War; is it possible?** Helen Caldicott will speak on the medical consequences of a nuclear war at the conference "Nuclear Madness," tomorrow at noon in the EMU Ballroom.

Helen Caldicott, a Physicians for Social Responsibility, is a world renowned speaker and author against nuclear power and weaponry. Congressman Jim Weaver arranged for Caldicott to come to the University to address the student body. Caldicott hopes to "teach people the facts" so that they will become aware what is happening in the world. Admission is free.

**All members of PNPMA and any students interested in Personnel** are invited to attend our next guest lecture. Linda Smith, Employment Manager at Sacred Heart Hospital, will be speaking on personnel issues. The meeting will be tomorrow at 3:30 p.m. in 110 EMU. Refreshments will be provided.

## INTERVIEWS

**Spend an Afternoon on the Job with Merrill Lynch** this Thursday in the EMU Forum Room. Learn about career opportunities in the field of stocks and bonds from Blaine Werner, Assistant Vice President/Resident Manager. Program will begin promptly at 2 p.m.

- Interviews:**
- Nov. 1** - U.S. Marine Corps (F, W, Sp, Su grads - B/M/Ph.D. - All majors for Career)
  - Nov. 1** - Yergen & Meier (F, W, Sp, Su grads - B/M - Accounting for Staff Accountant)
  - Nov. 1-4** - Peace Corps and at EMU (Group Meeting 4-5 p.m., Room 108, EMU)
  - Nov. 2** - New York Life Insurance (F, W grads - B/M - Bus. Admin for Sales Representative)
  - Nov. 3** - Hewlett-Packard Company 1) F, W, Sp grads

- MBA's w/applicable majors for Operations Mgmt (Strong quant. skills), Factory & Field Mktg (Strong technical background), Information Systems/EDP for CS Programming background 2) F, W, Sp grads - B/M/Ph.D. - CS for Research & Development/Information

**Nov. 4** - State Farm Insurance Company (F, W, grads - B - General Business for Trainee and for Claims; Jr. level students - any major - for Minority Summer Intern program)

**Nov. 5** - U.S. Air Force at EMU  
Additional information on recruiter requirements available at Career Planning & Placement.

**Please sign up immediately if interested in interviewing with the following recruiters:**

**Oct. 25** - The American Graduate School of International Management (All degree levels - all disciplines for information on Grad School Program in International Mgmt.)

**Oct. 25** - Atkinson Grad School of Mgmt., Willamette University (F, W, Sp, Su grads - B - All majors for Two-year graduate program)

**Oct. 26** - College of Law, Willamette University (F, W, Sp, Su grads - anyone wishing to discuss Law School/Law School admissions)

**Oct. 27** - Forestry Associates International, Inc. (B/M/Ph.D. - Forest Ind. Mgmt./Bus./Geology/Natural Resources) Group Meeting - Oct. 26 - 7-8:30 p.m., Room 108 EMU)

**Oct. 26** - Lawyer's Assistant Program, University of San Diego (F, W, Sp, Su grads/also Undergrads - B/M/Ph.D. - Any major for graduate level training for career as Lawyer's Assistant)

**Oct. 26** - McDonnell Douglas Corp. Astronautics (F, W, Sp, Su grads - B/M - CS/Physics for Positions in Technical areas - See RIF notebook)

**Oct. 29** - Pepperdine University, School of Law (F, W, Sp, Su grads - B - All majors for student candidates for School of Law) Group Meeting 9-10 a.m., Century Room D, EMU

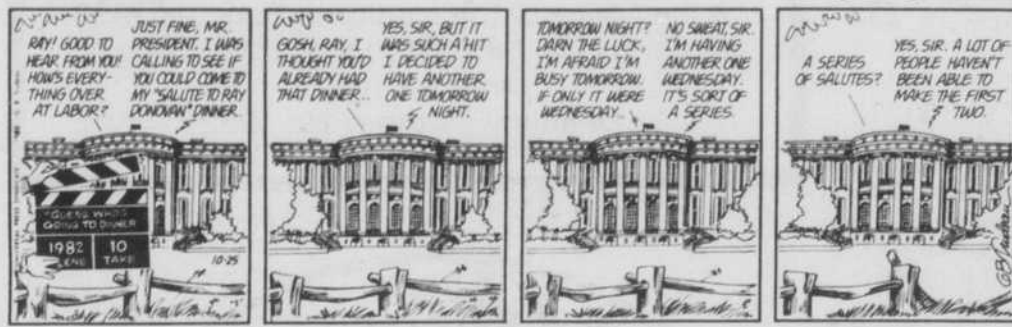
## MISCELLANEOUS

**Attend the People's Law School this week and learn all about wills.** The class is free and meets Oct. 27 from 7 to 9 p.m. at Patterson Community School, 1510 W. 15th. You'll learn how a will is prepared, whether a will is necessary and how to avoid problems. There is no cost or registration.

**Paid Chorus Positions are available for a production.** The show is directed by Ed Ragozzino is scheduled for presentation in January at the Hult Center for the Performing Arts. Auditions will be held tonight at 7 p.m. in the Soreng Theatre of the Hult Center for the Performing Arts. Singers and dancers, 18 years or older should bring resumes and be prepared to audition. Singers should be prepared to sing a Broadway show tune (accompaniment will be provided). Dancers should dress for a dance audition (bring tap shoes). Dancers who sing will be given priority. Ten men and 10 women will be selected.

**Learn how to buy, store and cook with bulk foods.** Sponsored by Head Start. For more information contact Michelle Kane at 689-9290 or 935-1005

## DOONESBURY



by Garry Trudeau

## BLOOM COUNTY



by Berke Breathed

## Waddle Life



by shawn bird

# Classifieds 686-4343

**RATES:** Rates are 15 cents per word for the first day and 12 cents per word for consecutive days the ad is run without change.

**\$1.50 minimum for the first insertion**  
**\$1.20 minimum for consecutive insertions**

## Clothing

**BUY-SELL-TRADE-CONSIGN**

### OLD FRIENDS

1128-A Alder 10:30-5:30  
Featuring fine vintage apparel, imports and contemporary fashions. 805.tfn

## For Sale

**POLYFOAM** Cut rate prices. Sleeping pads, mattresses any size.

**BOB'S UPHOLSTERY**  
258 Polk 343-1956  
525.tfn

## FOAMI FOAMI FOAMI

Cut to any size. Mattresses, cushions, sleeping pads, van beds and pillow inserts.

### THE FOAM OUTLET

Behind Mayfair, Spfd. 747-1425  
10-29

**HYPNOSIS TAPES** Most subjects: \$10 Improve concentration, memory, overcome exam phobia. 341-6014. 681.tfn

**SKIS** Fisher Racing Comps. 190cm. Brand new, \$150. Kurt 485-9209 10-25

**COLD?** We have space heaters \$5 and up. Dryers \$40 and up. Stovepipe, hardware. Check our clothes for Halloween costumes, winter clothes, baby clothes, fruit jars, 10-speed bikes. 25" Peugeot U-08, \$100, 23" Raleigh Sprite \$70, 20" MX Gitane \$45. Assorted 2 and 1 speeds.

### LEDC COMPANY STORE

Non-Profit Recycling Center  
245 Polk  
8:20-5 weekdays, 10-4 weekends  
786-10-25

**MAROON SECTIONAL** Good condition, real comfortable, \$85. Call 242-2122 eves. 10-25

**KING SIZE WATERBED** Mattress, heater, liner. \$75. 682-2145. 10-27

**WATER BED** Includes frame, liner, bag and heater. Queen size \$20. 242-9092. 10-27

**'80 LE CAR (RENAULT)** 20-40 mpg. 4,000 miles. Red. \$2,800. 686-4028/245-7728. 10-26

## Buy & Sell

### THE BUY & SELL CENTER

Buy-Sell-Trade  
Musical instruments, photo equipment, backpacking gear, stereos and tools.  
361 WEST 5th

**JVC A-53 AMPLIFIER** \$100. Hitachi turntable and handcrafted speakers \$20. 895-2824, Creswell. 10-25

## Instruction

**POLARITY:** A weekend at the coast. LCC Heceta House, Nov. 5 (evening), 6, 7. \$25 include vegetarian meals and lodging. Preregister. LCC Downtown Center, Nov. 1 or call Judy Lindsay, M.A. 244-1101 or 242-1937. 10-25

**NOVEMBER OPENINGS** Guitar, piano, bass lesson. John Sharkey. 244-5520. 16 years teaching, all styles. 608.10-29

**NEW WEIGHT-LOSS PROGRAM** Scientific 8-week study. \$50 fee covers all materials. Enrollment closes Oct. 21. 341-6014. 682.10-29

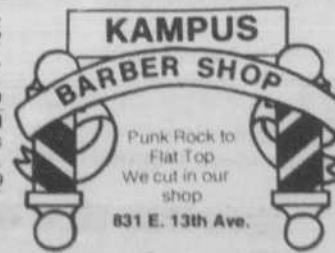
Graduate Student Tutoring

## Math, Chem & Physics

Call: Bahram at 485-1819

**TUTOR FOR BI 102, 105, 311.** Also Basic Chemistry and Math. Jerry 245-9442. 10-25

## Services



**KAMPUS BARBER SHOP**  
Punk Rock to Flat Top  
We cut in our shop  
831 E. 13th Ave.  
**THERAPEUTIC MASSAGE**  
Treat yourself (or a friend) to a full body massage. State licensed. \$15-one hour. Call for appt. Loren Swift, M.T. 485-6742. 429.HFM

**THE TREASURE HUNT IS ON!**  
Clues daily  
Find the key  
Unlock the chest

**LONG ON SERVICE**

**WIN!**  
a weekend at the Coast  
Details at Kinko's Copies  
**OPEN 7 DAYS**  
860 East 13th 344-7894

Please Come to Meet and Hear

**Dr. Helen Caldicott**  
President of Physicians for Social Responsibility  
Author of *Nuclear Madness*  
She Will Speak on

**The Medical Effect of Nuclear War**

Tuesday, October 26 • 12 noon, EMU Ballroom  
Sponsored by Congressman Jim Weaver

**Relax at Rennie's**  
and  
**Support United Way**

**Tuesday, Oct. 26**  
Rennie's will donate its proceeds to United Way  
Open 7:30 a.m. for breakfast, Close 1 a.m.  
Featuring an outdoor deck and game room

Rennie's Landing • 1214 Kincaid • 687-0600