

THE EMU
CULTURAL FORUM
PRESENTS

**ROMEO
VOID** FROM SAN FRANCISCO

WITH PUNISHMENT FARM

THURSDAY, SEPT. 30

EMU BALLROOM 9 PM

350 U OF O STUDENTS
450 DAY OF SHOW
450 GENERAL PUBLIC
550 DAY OF SHOW

HUGE DANCE FLOOR

Tickets available: EMU Main Desk, Earth River Records, Dianas

Come early to attend the EMU Open House with free refreshments, demonstrations, and special discounted prices throughout the EMU. Watch for our special Open House ad in the Emerald.

Alcohol survey sparks plans for campus education program

A recent campus alcohol survey has sparked interest in starting a University alcohol education program, says Frank Geltner, University program consultant.

Geltner and Dean of Students Robert Bowlin have applied to Metropolitan Life Foundation for a \$22,623 student health grant. The University would pay an additional \$8,841 of the program's costs.

Results from the alcohol survey, conducted by Gwartney-Gibbs, are included in the grant request as justification for the program.

Geltner isn't sure where the University would get its share of the money. If the grant is approved, various offices — including the ASUO — would be

asked for funding, he says.

University money would pay for computer time and office supplies, Geltner adds.

The ASUO and Geltner are searching for volunteers for the student-run program, he says.

The student volunteers would staff a University BACCHUS (Boost Alcohol Consciousness Concerning the Health of University Students) chapter, says Jim Richards, ASUO administrative assistant for program development. The BACCHUS program began at the University of Florida in 1976.

"This is not an Alcoholics Anonymous," Richards says. "It's an educational group to inform people about responsible drinking."

Richards considered starting

an alcohol educational program previously, and the survey results and an alcohol-related death of a friend provided further motivation.

Richards' fraternity, Phi Kappa Psi, is taking steps toward responsible drinking, he adds.

This year, the fraternity is providing non-alcoholic beverages at parties and a snack food, such as popcorn, to slow alcohol absorption into the bloodstream, Richards says.

He is pushing for Incidental Fee funding for the program this year. Interested students should contact him in the ASUO office.

Tanker

Continued from Page 5

evacuated area detected quantities of dangerous hydrogen chloride and other chemical gases, said Gus Von Bodungen of the state's air quality division.

There were fears that fumes might spread as far as Walker, about 10 miles to the west, where about 75 evacuees were being cared for by the Red Cross.

No injuries have been reported, but evacuation extended on Wednesday to Satsuma, a small community about five miles west and windward of the blaze.

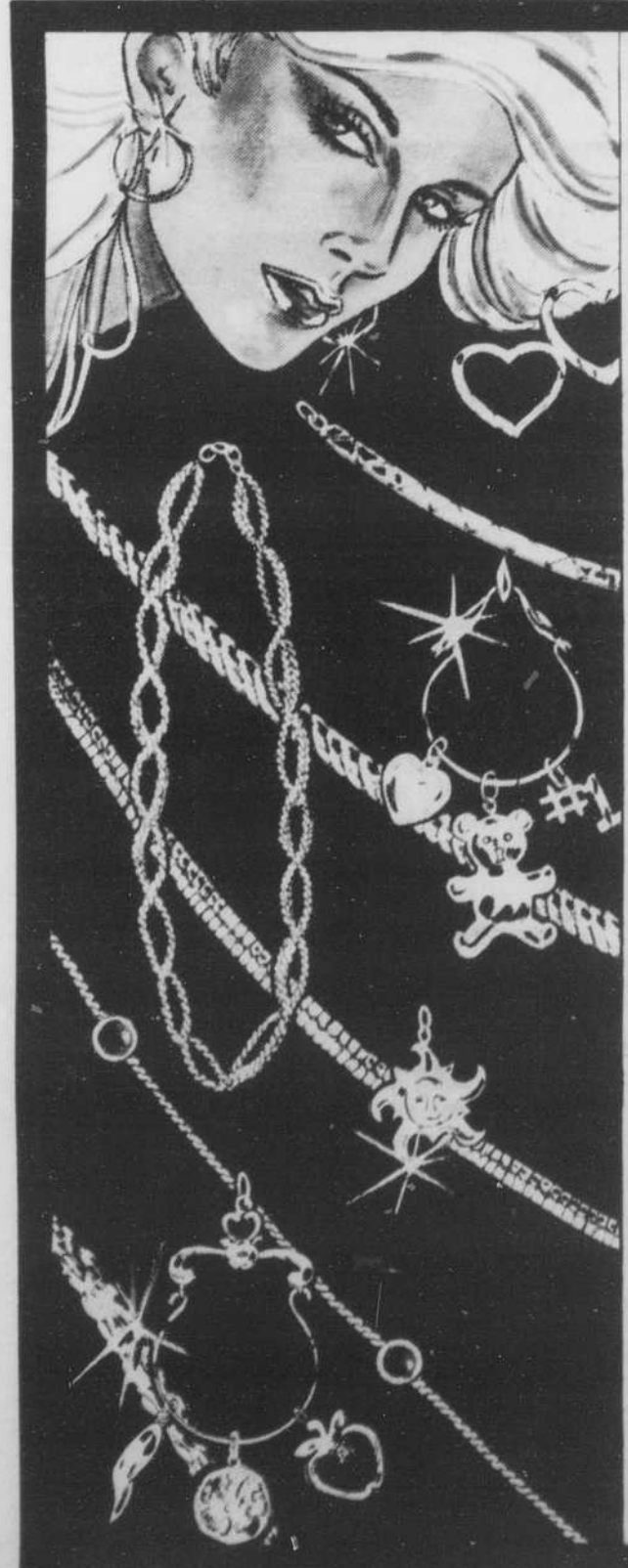
Emerald takes top award

For the second year in a row the Oregon Daily Emerald has won top honors in the Columbia Scholastic Press Association's newspaper contest.

Last year's Emerald was among 10 medalists selected from a field of campus newspapers nationwide.

Other medalists included the Old Black and Gold, Wake Forest University, The Daily Bruin, University of California, Los Angeles, The Daily Orange, Syracuse University, Chronicle, Duke University and The Daily Beacon, University of Tennessee, Knoxville.

The 1980 Emerald also was a medalist in the annual contest.



CAMPUS STORE ONE DAY ONLY - FRI., OCT. 1st FINE 14K GOLD 44% OFF

Chains, Charms, Bracelets, Charmholders, Earrings

We have a superb collection of 14K Gold items from the "Florentini Collection"™, and a large selection of each. Now is the time to have the Gold you've dreamed of at a terrific price! But for one day only! All sales final.

SPECIALS

| | REG. | SALE |
|--|-------|-------|
| 15" SERPENTINE NECKLACE..... | 24.00 | 9.99 |
| 7" SERPENTINE BRACELET..... | 14.00 | 5.99 |
| 10 PT RUBY OR SAPPHIRE STUD EARRINGS..... | 35.00 | 14.99 |
| 10 PT RUBY OR SAPPHIRE CHARM..... | 25.00 | 9.99 |

QUANTITIES LIMITED

Kaufman's