

## City names EPAC hall

The main concert hall in the Eugene Performing Arts Center is now officially the "Silva Concert Hall," by a vote of the Eugene city council.

Carolyn Silva Chambers presented the Eugene Arts Foundation with a \$1.5 million gift in honor of her late parents, Julio and Elizabeth Silva. The money will be used to establish a permanent endowment, the income from which will provide support for "principal performing arts organizations" in Lane County.

The Silvas were active members in the Eugene community from the time they moved here in 1933 from Clatskanie. Chamber's father owned car dealerships and was president of the Community Chest (predecessor of the United Way), and Chamber's mother was active in the Red Cross and was president of the Eugene Welfare League.

Photo by Mark Pynes

*Kaufman's*

# AFFORDABLES

CAMPUS STORE ONLY

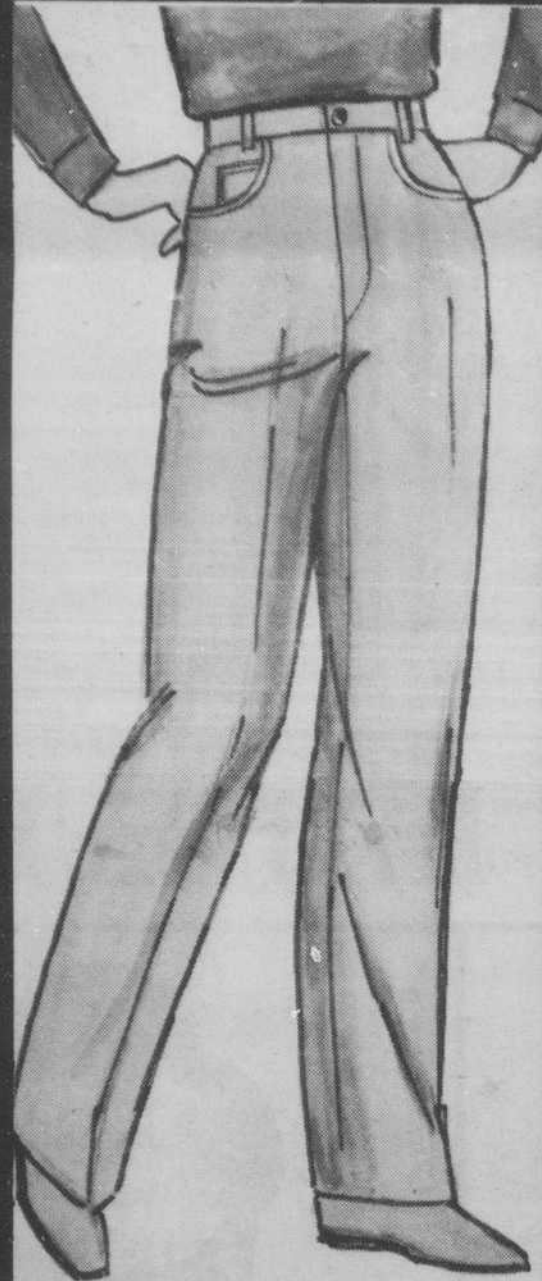


PLAID  
SHIRTS

9.90

ORIG. 15.00

Long sleeve, pointed collar menswear styled shirts. Poly/cotton.



CALVIN KLEIN JR.  
5 POCKET JEAN

29.90

ORIG. 44.00

Calvin Klein Jr. jeans. 100% cotton Drill Cloth. Tan, Brown, Grey. 3-13.



CORDUROY  
CHEENOS

19.90

ORIG. 28.00

Classic menswear look slash pocket trouser. Poly/cotton. Wine, Blue, Red, Tan, Purple, Navy. 3-13.



TIPPED  
SHETLAND  
SWEATERS

17.90

ORIG. 25.00

Classic 100% wool shetland sweater tipped with contrasting color around cuff and neck. Off-White, Red, Grey, Navy. S.M.L.