

# calendar

M A Y 6 — M A Y 1 2

F I L M

**FRIDAY**  
 "Sorcerer" at 7 and 9:15 p.m. in 180 PLC. \$1.50.  
 "Plan 9 From Outer Space" and "Fantastic Planet" at 7 and 9:45 p.m. in 177 Lawrence. Adults \$1.50, children \$1.  
 "Arthur" at 7 and 9 p.m. in 150 Geology. Adults \$2.

**SATURDAY**  
 "Animal House" at 8:30 p.m. in the EMU Ballroom. Pre-show skits, etc. at 8 p.m. \$1.50, free if dressed as one of the "Animal House" characters.  
 "Brother Sun, Sister Moon" at 7 and 9:30 p.m. in 177 Lawrence. Adults \$1.50, children \$1.  
 "Invasion of the Body Snatchers" (original version) at 7 and 9 p.m. in 180 PLC. Adults \$1.50, children 75 cents.  
 "Clockwork Orange" at 7 and 9:30 p.m. in 150 Geology. \$1.50.

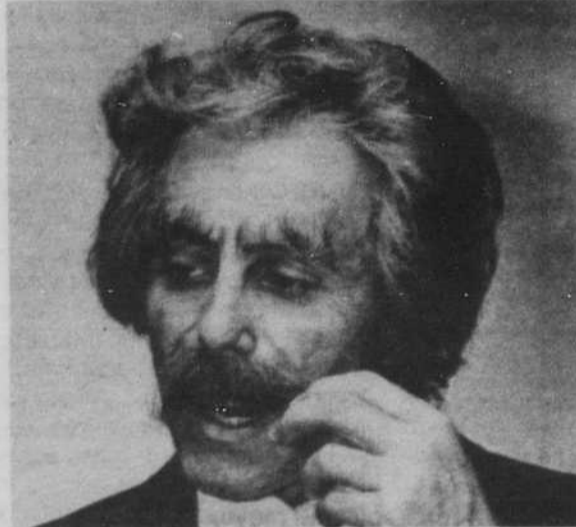
**SUNDAY**  
 "To Kill A Mockingbird" at 7 and 9:30 p.m. in 180 PLC. \$1.50.

**NIGHTLY**  
 Bijou Theatre — "Blood Wedding" tonight at 6:30, 8:10 and 9:45 p.m. Students \$2.50, general admission \$3.  
 "Montenegro" starts Friday at 7:15 and 9:30 p.m. Saturday and Sunday matinee at 3:30 p.m. Students (Sunday — Thursday) \$2.50, general admission \$3.

"Rocky Horror Picture Show" Thursday and Sunday at midnight, Saturday at 1 p.m. (no paraphernalia). \$2, tickets available 30 minutes before show.  
 "Rock Show" Friday and Saturday at midnight, Sunday at 1 p.m. Prices vary.  
 "Rust Never Sleeps" Wednesday at midnight. \$1.

Cinema 7 — "Man of Iron" tonight at 7 and 9:46 p.m. \$3.  
 "Voyage en Douce" Starts Friday at 7:30 and 9:30 p.m. Sunday matinee at 2 p.m. \$3.

**CLUBS, ETC.**  
 Hacienda Steak House: Captain Tripps, through Sunday.  
 Harry's On The Canal: Mike Shipley, Tuesday - Saturday.  
 Jo Federigo's: Emmett Williams and Forrest Moyer, tonight.  
 Klaus Roehm Duo, Friday and Saturday.  
 Andre St. James Trio, Sunday and Monday.  
 John Workman and Phil Curtis, Tuesday and Wednesday.  
 Saturday Market: Don Latarski Group, 1 p.m. Free.



Mark Twain will be on campus Sunday at 8 p.m. for a talk on "War and Peace."

M U S I C

**TODAY**  
 The School of Music sponsors its first invitational High School Band Festival starting at 9 a.m. in Beall Hall.  
 Six music students present a Musical Smorgasbord concert at 12:30 p.m. in 198 Music. Free.

**FRIDAY**  
 Molly Brophy (soprano) gives a student recital at 8 p.m. in Beall Hall. Free.  
 Jim Meyer (trombone) presents a student recital at 8 p.m. in Gerlinger Lounge. Free.  
 Swingshift, an all-woman jazz quartet, will perform in a benefit fund-raiser for the Burning Spear Newspaper (African People's Socialist Party) at 8 p.m. in the WOW Hall. Sliding scale donation \$4-6.

**SUNDAY**  
 Mark Allen Edwards (percussion) presents a student recital at 4 p.m. in Beall Hall. Free.

**MONDAY**  
 Willie Sordill, folk, blues and jazz artist, appears at Aunt Lucy Devine's at 9 p.m. \$3.

**TUESDAY**  
 David Howard (organ) will give a doctoral recital at 8 p.m. in Beall Hall. Free.  
 Willie Sordill, folk, blues and jazz artist, appears at Aunt Lucy Devine's at 9 p.m. \$3.

**WEDNESDAY**  
 The University Chamber Choir will perform at 8 p.m. in Beall Hall. Free.

**CLUBS, ETC.**  
 Hacienda Steak House: Captain Tripps, through Sunday.  
 Harry's On The Canal: Mike Shipley, Tuesday - Saturday.  
 Jo Federigo's: Emmett Williams and Forrest Moyer, tonight.  
 Klaus Roehm Duo, Friday and Saturday.  
 Andre St. James Trio, Sunday and Monday.  
 John Workman and Phil Curtis, Tuesday and Wednesday.  
 Saturday Market: Don Latarski Group, 1 p.m. Free.

T H E A T R E

"A Couple White Chicks Sitting Around Talking" Oregon Repertory Theatre, 8 p.m. nightly, except Mondays. 8 p.m., Sunday at 2 and 7 p.m. \$5.

G A L L E R Y

University Museum of Art — A display of works by ten Fine Arts students will be featured in the main galleries and the Photography at Oregon Library. Show opens Tuesday, and runs through June 13.  
 Opus 5 — "New Silver Jewelry" by Stephen Shaw. Shows through May.

M I S C E L L A N E O U S

The Student University Relations Committee is sponsoring Duck Week this week, with the following events scheduled:

"Animal House" will be shown Friday at 8:30 p.m., with a pre-show of student skits, sing-alongs, etc. at 8. \$1.50, free admission to anyone dressed as an "Animal House" character.  
 The John Belushi Commemorative Jello Eating Contest will be held Monday at 3 p.m. on the east lawn of the EMU.

Performing Arts Day is Tuesday, noon - 3:30, with University faculty members and students performing in the EMU Breezeway.  
 Foreign student booths will line the EMU Breezeway Wednesday from noon - 2 p.m.

The University Department of Dance presents "Student Dance Concert '82" Friday and Saturday at 8 p.m., and Sunday at 7:30 in the Dougherty Dance Theatre (354 Gerlinger). Students and seniors \$2, general public \$3.

Mark Twain (William McLinn) will lecture on "War and Peace" Sunday at 8 p.m. in Beall Hall. McLinn, a former congressional staff member, left Washington two years ago after deciding that Twain's humor would be a better vehicle to enlighten people than the acts of Congress. Students \$2.50, general public \$3.50.

Fiction writer Paul Friedman will read from his works today at 8 p.m. in the EMU Forum Room. Free.

Children 4 - 7 years old will present a "Children's Performance" Saturday at 6:30 p.m. at Dance Works, 1231 Olive St. \$2 donation.

The WISTEC Auditorium weekend shows are "Spring Skies" at 1 p.m. and "Watch Out For Falling Rocks" at 3 p.m. Free with regular WISTEC admission.

**KWAX-FM (91.1)** — "Juvenile Justice, Juvenile Crime" continues on "An Oregon Evening" tonight at 6:30 p.m.

"Lord of the Rings" continues Saturday at 7 p.m.

"The Adventures of Sherlock Holmes" Saturday at 7:30 p.m.

"A Prairie Home Companion" Saturday at 8 p.m.

"National Radio Theatre of Chicago Presents: Homer's 'Odyssey'" The fourth part of an eight-part series will be aired Sunday at 6 p.m.

compiled by matt meyer  
 campus information:  
 686-INFO, ask for tape 651

Featuring in our lounge:  
**Velvet**  
 Thursday—Saturday  
 9 pm till 2 am  
 Happy Hour  
 4—7 pm Monday—Friday  
 Well Drinks \$1.00 Free Hor d' oeuvres  
**Only at the Holiday Inn Holdome**



**Don't Forget Mom!!!**  
 This mother's day send  
 A balloon bouquet

- mom's day coffee mugs
- candy baskets
- heart shaped mylar balloons

**ORDER TODAY**  
*Balloon Express*  
 "where we create smiles"  
**726-4992**  
 Free delivery Eugene-Springfield

**TIME TO CLEAN UP YOUR ACT?**

**FIRST STREET CAR WASH**  
 COIN-OPERATED SELF-SERVICE VACUUMS  
 corner of 1st & Jefferson

**THE LOUNGE** at the EMERALD VALLEY FORREST INN

**SHUFFLE** Thursday, Friday and Saturday nights.

Miss KSND Top Model Fashion Show Thursday nights 8 p.m. 93c BEER & WINE

**THE EMERALD VALLEY FORREST INN**  
 83293 DALL KENT ROAD  
 CRESWELL, OREGON  
 895-2117  
 485-6796 EUGENE SPRINGFIELD

**Could You Pay Your Medical Bills?**

Are You:

1. Over 23 years old	<input type="checkbox"/>	<input type="checkbox"/>
2. Not a full time student	<input type="checkbox"/>	<input type="checkbox"/>
3. Not covered under any health insurance	<input type="checkbox"/>	<input type="checkbox"/>
4. Not satisfied with your present coverage	<input type="checkbox"/>	<input type="checkbox"/>

If yes to any question we have alternatives to meet the special needs of students and faculty.

**CALL 687-8665**  
**Quotes by Phone**

**FREITAS & COMPANY**  
 1247 Willamette · Suite 10  
 Eugene, Oregon 97401  
 (503) 687-8665