

# emerald

## CSPA school suffers suspension

### Dean's office fully expelled

By Debbie Howlett  
Of the Emerald

As expected, none of the people affected by \$304,000 worth of budget cuts announced during finals week are happy about them, but most seem resigned that the deficit had to be filled from somewhere in the already scant budget.

"I deeply regret the necessity to suspend CSPA as a free-standing professional school," read a prepared statement from Ken Tollenar, acting dean of CSPA. "However, it's important to understand that all existing CSPA courses and degree programs will continue even though the faculty are being moved administratively to other schools."

The department of public administration in CSPA will be combined with the Urban and Regional Planning department in architecture. The community service faculty will join the health, physical education and recreation school.

While most of the department heads are as equally distressed as Tollenar about the administrative cutbacks, most are at least relieved that the courses and services will continue.

John Orbell, head of the Institute for Social Science Research, says that the institute is being eliminated but not the services that the institute provides. "We'll maintain our databank holdings and our membership in the Inter-University Consortium for Political and Social Research," Orbell says.

"With the Reagan budget cuts we had already started into a vicious downward spiral, he says. "There is just less justification for us to stay."

Orbell adds that graduate students will still be able to do research but without the help of the institute.

The Environmental Studies Center got the boot also but according to director Terry Brown, the only thing that will be lost is a classified staff position, the rest of the study center will remain. "It's just a pile of books and a room," Brown says.

Jon Kahananui, the University Architect, has also been cut to make up budget deficits. His office was eliminated completely because there is no

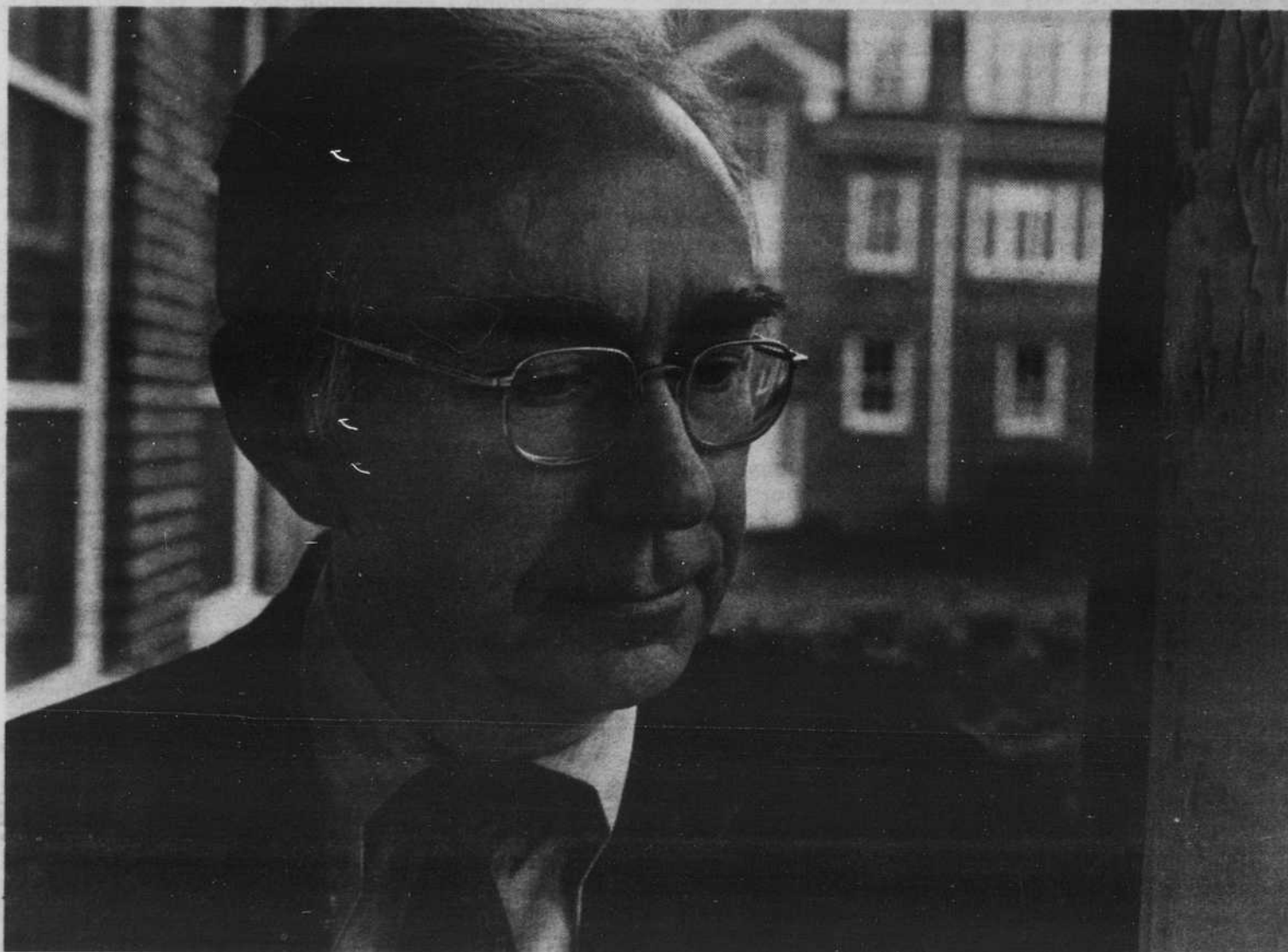


Photo by Bob Baker

Ken Tollenar, acting dean of CSPA, loses his post as Acting Dean of Community Service and Public Affairs July 1.

ongoing capital construction and according to University Provost Richard Hill, the budget situation points to little construction in the next few years.

"I'm sorry the University is getting rid of this position regardless of capital construction," Kahananui says. "Even if it's me or anybody else, the University needs to have an architect."

Kahananui isn't sure what he'll do after the end of the fiscal year in July when his position will be eliminated. "I was planning on retiring in March, maybe I'll just retire sooner," he says.

Kahananui has been at his present position for the past 10 years.

A total of 6.37 full-time equivalent faculty and teaching fellowship positions were cut and 4.50 FTE classified staff positions eliminated. Most of the budget items that were eliminated or suspended will not severely change curriculums.

## Budget cuts — facts and figures

Listed here are the budget cuts announced March 17. The figure in parentheses are dollar savings. FTE is full-time equivalent. (A) distinguishes academic staff from (C) classified staff.

### Academic Affairs

Suspend the School of Community Service and Public Affairs (\$85,484)

a. Eliminate the Office of the Dean (.5 A FTE) and one classified staff position (1 C FTE).

b. Combine the Department of Urban and Regional Planning with the Program in Public Administration. Reduce faculty (1.3 A FTE).

c. Eliminate state support for stipend of the Director of the Bureau of Governmental Research and Service.

College of Arts and Sciences (\$31,960)

a. Remove support for the Comparative Literature Journal.

b. Remove support for the Environmental Studies Center (.5 C FTE)

c. Reduce the service and supply budget.

Reduce GTF budget in the journalism school. (.5 A FTE, \$5,074)

Reduce adjunct faculty budget in law school. (.15 A FTE, \$4,117)

### Support Services

Reduce staff of financial aids office by 1 A FTE. (\$21,054)

### Research, Public Services and related areas

Close the Institute for Social Science Research but maintain data bank holdings. (\$23,612; 1 C FTE)

Reduce service and supply budget for the vice president of University relations. (\$7,000)

Eliminate the office of University Architect. (\$41,963; 1 C FTE)

### Administration

Reduce staff of vice provost for academic fiscal affairs. (.5 C FTE, \$9,172)

### Proposed Additional Reductions

(These reductions were accepted by the State Board, they will take effect at the beginning of the fiscal year, July 1st.)

Eliminate basic and standard endorsement in educational media. No savings for 1982-83, figures are for 1983-84. (\$22,045; 9 A FTE; 5 C FTE)

Reduce faculty in music school. (.42 A FTE, \$6,760)

Reduce faculty in business school. (.50 A FTE, \$18,574)

Reduce faculty in art education. (1 A FTE, \$28,181)

Reduce faculty in classics. (1 A FTE, \$20,877)

## Museum plans 'Blazer' raffle to stay open

By the News Bureau  
For the Emerald

Two activities are planned in April to raise money to keep the University natural history museum open and active, according to Richard Pettigrew, archaeologist at the University and fund-raising coordinator.

A lecture discussion on creationism and Darwinism is scheduled for April 19. The museum is also raffling off tickets to the Portland Trail Blazers-Seattle SuperSonics basketball game April 18.

On the 100th anniversary of Darwin's death, April 19, a lecture discussion titled "100 Years after Darwin — Why Darwinism?" will be held at 7:30 p.m. at the Geology Building, Room 150. Tickets — \$3 each — are available at the EMU Main Desk and at the door.

University Pres. Emeritus Robert Clark will moderate the program.

The museum is also offering a chance to win a weekend for two in Portland including dinner, hotel accommodations, brunch and two tickets to the

Blazers game. Chances are offered for a donation of \$1 each.

The dinner will be at the Eastbank Saloon and overnight accommodations will be at the Cosmopolitan Hotel on Saturday, April 17. Sunday brunch will be at the Benson Hotel. The game is Sunday afternoon.

To obtain one or more chances, stop by the museum in the science complex at the University or send a check made out to the University of Oregon Foundation along with name, address and telephone number to Blazer Raffle, Mu-

seum of Natural History, University of Oregon, Eugene, OR 97403.

The museum was slated for closure June 30 in a round of budget cuts made last fall. The museum and its supporters are trying to raise \$34,000 to keep the museum open and to continue the new exhibits and projects underway. That amount covers costs for a director, part-time secretary, part-time exhibit coordinator and work-study assistants.

If less money is raised, a reduced level of services will be

offered.

The museum has received almost \$5,000 in donations as well as a pledge from an anonymous donor to match all contributions up to \$15,000. This puts the museum almost one-third of the way toward its goal.

Among the gifts are two \$1,000 scholarships from the University Mothers' Club for students who will work at the museum next year.

For more information on the fund-raising effort, call Pettigrew at 686-5130 or the museum at 686-3024.