

Calendar

February 18 to February 24

FILM

On Campus:

"Camelot" Friday at 6:30 and 10 p.m. 150 Geology. Adults \$1.50, children \$1.
 "Dragonslayer" Friday at 7 and 9:15 p.m. 180 PLC. \$1.50.
 "The Front" Friday at 7 and 9:15 p.m. 177 Lawrence. \$1.50.
 "Little Big Man" Feb. 20 at 7 and 9:45 p.m. 177 Lawrence. Adults \$1.50, children \$1.
 "The Four Musketeers" Feb. 20 at 7 and 9:30 p.m. \$1.50.
 "Young Frankenstein" Feb. 20 at 7 and 9:15 p.m. 180 PLC. Adults \$1.50, children 75 cents.
 "Breaker Morant" Feb. 21 at 7 and 9:15 p.m. 150 Geology \$1.50.

Bijou Theatre:

"The Last Metro" nightly at 7:15 with "A Man and a Woman" at 9:40. Students \$2.50 (Sunday - Thursday), general public \$3.
 "Alien" Feb. 18 - 20 at midnight, Feb. 21 at 1 p.m. Prices vary.
 "Putney Swope" Feb. 24 at midnight 96 cents.

Cinema 7:

"Tell Me a Riddle" tonight at 7:30 and 9:30 p.m. with University film professor Ellen Seiter's short, "Dear Rose." \$3.
 "Union City" nightly at 9:30 with "The Big Sleep" at 7:30 \$3.
 Australian Retrospective: 1896 - 1956.
 Feb. 19 - "Three in One" at 7, "Back of Beyond" and "The Sentimental Bloke" at 9:30 p.m.
 Feb. 20 - "Jedda" at 7, "The Cheaters" and "His Royal Service" at 9:30 p.m.
 Feb. 21 - "For the Term of His Natural Life" at 11 a.m., "40,000 Horsemen" and "Smithy" at 7 p.m.

THEATRE

"Getting Out" University Theatre in the Pocket Playhouse today - Feb. 20. University students \$2.75, general public \$4.50.

"American Buffalo" Oregon Repertory Theatre nightly at 8 p.m. Prices vary.

MUSIC

On Campus:

Musical Smorgasbord today at 12:30 p.m. in 198 Music. Free.
 Brent Weaver (composer) presents a master's recital tonight at 8 in Beall Hall. Free.
 Karen Nestvold (mezzo-soprano) presents a senior recital Friday at 8 p.m. in Beall Hall. Free.
 John McCutcheon presents a concert of Appalachian mountain music Feb. 21 at 7:30 p.m. in the EMU Ballroom. University students \$2.50, general public \$3.

B.J. Kelly's (cover):

Tonight - Los Xplorers and Civil-Eyes.
 Feb. 19 - 20 - Gregg Tripp
 Feb. 22 - Party Kings
 Feb. 23 - Bo-Gas
 Feb. 24 - Mason-Dixon

Jo Federigo's (no cover):

Tonight - Feb. 20 - Valinda Aletha and Jeff Kirsch
 Feb. 21 - 22 - Dick Blake Trio
 Feb. 23 - 24 - Klaus Roehm and Bill Sabol

Etc.:

Triad, ORT Midnight Jazz Series Feb. 19 and 20. \$3.50.
 Jazz at the International (Hilton Hotel) nightly.

MISCELLANEOUS

The Bill Evans Dance Company presents two performances Friday and Feb. 20 at 8 p.m. in the Dougherty Dance Theatre. University students \$5, general public \$6. The company will also present a musical comedy class today at 3:30 p.m. in 330 Gerlinger and a modern dance class Feb. 20 at 10:30 a.m. in 353 Gerlinger. University students \$3, general public \$4.50, observers \$1. A lecture-demonstration will be held Friday at 11:30 a.m. in 354 Gerlinger. Admission is free.

Alex Kuo, poet and writer, will give a lecture on poetry and the private sector Feb. 22 at 2:30 p.m. in 138 Education. He will also read from his works at 8 p.m. in the Homefried Truckstop. Both events are free.
 "Randy Hill's Magic Mania" at Aunt Lucy's Wine Loft Feb. 20 at 8:30 p.m. \$3.
 "Cafe Exacto" at Aunt Lucy's Wine Loft Feb. 22 at 8:30 p.m. \$1.
 Muscular Dystrophy Chug-a-lug at Hooker's Inn Feb. 24 and 25. \$15 entry fee per five-person team.

KWAX (91.1 FM)

"The Adventures of Sherlock Holmes: The Beryl Coronet" Feb. 20 at 7:30 p.m.
 "Stories Your Mother Never Told You" with storyteller Cynthia Orr Feb. 24 at 7:30 p.m.

CONTINUING

University Museum of Art: "Danzig 1939: Treasures of a Destroyed Community" and a collection of Japanese prints. Shows through March 7. Photography at Oregon Gallery: Claudia Wolz, black and white photographs. Shows through March 21.
 Aperture Gallery: Russell Dudley. Shows through March 10.
 Gallery 141 (Lawrence Hall): Vivian Chow and Kathleen Hartley (paintings and prints). Shows through Friday.
 Dean's Lobby (Lawrence Hall): Architectural drawings by Eric Mendelsohn. Shows through March 5.
 Eugene Public Library: "Do You Remember?" Dot Dotson's 50th anniversary historic photo show.
 Opus 5: "Leaping Lizards!" by Mary and Tony Bowman. Shows through Feb. 28.
 Prose Dress: Prints by Jennifer Guske. Shows through March 13.
 WISTEC Planetarium: "Winter Skies" weekends at 1 p.m., "Skywatchers of Ancient Mexico" at 3 p.m.



Poet-writer Alex Kuo will lecture 2:30 p.m. Feb. 22 in the University Education Building, Room 138. He will read from his works at 8 p.m. at the Homefried Truck-

compiled by matt meyer
 campus information: 686-INFO
 ask for tape 651

et al.

MEETINGS

The University College Republicans will hold an Executive meeting today at 7 p.m. in Century Room B, EMU. Individuals interested in the organization are also welcome to attend. For more information, call either David Ridenour at 344-1625 or Douglas Green at 747-2047.

The Incidental Fee Committee will hold budget hearings today in the EMU (room to be posted). Schedule: 4 p.m., ASUO Executive; 5 p.m., Philosophy Club; 5:30 p.m., Legal Services; 6 p.m., Rec. Folk Dance; 6:30 p.m., Plus; 7:15 p.m., Amer. Soc. of Int. Design; 7:30 p.m., Comptrollers.

The Student University Affairs Board will meet today at 3:30 p.m. in Century Room A, EMU.

The University Sailing Team is holding a meeting tonight at 8 in the EMU (room number to be posted).

SPEAKERS

"St. Basil's and Other Curiosities: The Preservation of Medieval Russian Architecture" is the topic of a lecture today by Prof. William Brumfield of Tulane University. Brumfield's talk will be held in Room 107, Lawrence Hall, at 7:30 p.m.
 "Language and Metaphysics" is the topic

of a lecture today at 3:30 p.m. in Room 204, Chapman Hall, by Prof. Dan Levi of the philosophy department.

MISCELLANEOUS

A recital to benefit the Pipe Organ Restoration Fund of the First United Methodist Church, featuring Mary Jo Simonds-Hunger, soprano, and Jon Waite, pianist, will be offered today at 7:30 p.m. at the First United Methodist Church, 1376 Olive St. The program will include works by Menotti, Mozart, Scarlatti, Handel, del Riego, Hamlisch, et al. The recital will be held in the sanctuary of the church. Call 683-2865 or 345-8764 for more information.

The Northwest National Security Conference needs volunteers for a variety of different tasks. If you are willing to help, contact Dave Isenberg or Bev Shoopman at the ASUO, Suite 4, EMU or call 686-3724.

Need a quiet place to study? Try the Chapel at the Wesley Center with a quiet lounge area. It is located at 1236 Kincaid St. and is open for students from 5:30 a.m. until 5 p.m., Monday through Friday.

Political Science peer advising can help Political Science majors or those interested in Political Science plan their schedules or obtain career-related information. Visit the

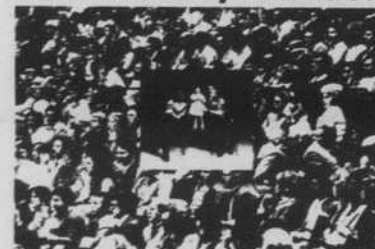
peer advising office in Room 907, PLC, or call 686-4875.

A women's bicycle tour down the Oregon Coast is offered March 5-6 by the Eugene Parks and Recreation Department's outdoor program. The tour is geared to the inexperienced cyclist. Fee is \$20. Sign up at the River House, 301 N. Adams St., by Monday, or call 687-5329.

POLICY

The Emerald's briefs column is the responsibility of the news/editorial department and is open to anyone wishing to announce meetings, lectures, seminars, exhibits, scholarships, or miscellaneous events. Briefs are run once and they are subject to space limitations. They must be typed and triple-spaced in a 65-character margin. Include all pertinent information. Also, list a name and phone number in case we have questions, and the date you want the brief run. Events with donations or admission charges will not be accepted unless the organization is non-profit. All items must be turned in by noon the day before publication at the Emerald Office, Room 300, EMU. If you have a question, contact John at 686-5511.

Of every 100 Americans
 3 are mentally retarded.



Can't the other
 97 of us help?



WHEN YOU GIVE HELP YOU GIVE HOPE.

WILDERNESS QUARTER

Backcountry Field Studies
 April 10 - June 7: 15 Units

Sierra Natural History
 Wilderness Instructor School
 Wilderness Photography
 Desert Canyons of the Southwest
 Kuaaina "Backcountry Hawaii"
 Wilderness Studies, Carriage House

UNIVERSITY
 OF CALIFORNIA
 Santa Cruz, CA 95064
 (408) 429-2761



CATCH OUR SUNDAY MORNING SHUTTLE

Round trip Bus Service



Sunday mornings to
 morning services at
**FIRST BAPTIST
 CHURCH**

Schedule

Pick-up:

8:30 am - The Way Inn (1332 Kincaid)
 8:35 am - Philadelphia House (1883 University)
 8:40 am - Carson Hall
 8:42 am - 14th & Agate Crosswalk
 8:45 am - Covered Courts

Return:

15 minutes after morning worship service

College Sunday School: 9:00 am
 Worship Service: 10:30 am
 Evening Service: 6:00 pm
 Wednesday: 7:00 pm

Ed Mach
 Director of College Ministries

345-0341 (Church)
 484-6938 (Home)
 345-6777 (Way Inn)

DOONESBURY

by Garry Trudeau



BLOOM COUNTY

by Berke Breathed

